



Yorke Road, Reigate

Guide Price £800,000





“

This home has been thoughtfully designed and extended by the current owners to create something really special. The room sizes are generous, making it ideal for any growing family and there is a wonderful sense of community within the surrounding roads.

”



Located in the heart of Reigate, this gorgeous period home has been lovingly extended and updated by the current owners to create the ideal family home. The combination of original character with contemporary finishes, blends seamlessly together and works well for modern day living.

The recently extended kitchen dining space is the real hub of the home. The neutral tones of the cabinets compliment the white quartz worktops. It's a sociable space where you can sit and chat at the large kitchen island as well as enjoy dinner at the table overlooking the garden. There is a separate cosy living room to the front with an original fireplace. The practicalities of the house can be found in the stylish downstairs cloakroom and extremely useful utility room.

Upstairs you will find three good size double bedrooms over two floors alongside a luxurious family bathroom. There is a large walk in shower cubicle which is bathed in light from the skylight above, as well as a separate bath.

Outside, the rear garden is a peaceful haven. There is a patio area to enjoy morning coffee, a good size lawn and a further seating area and shed at the rear of the garden.

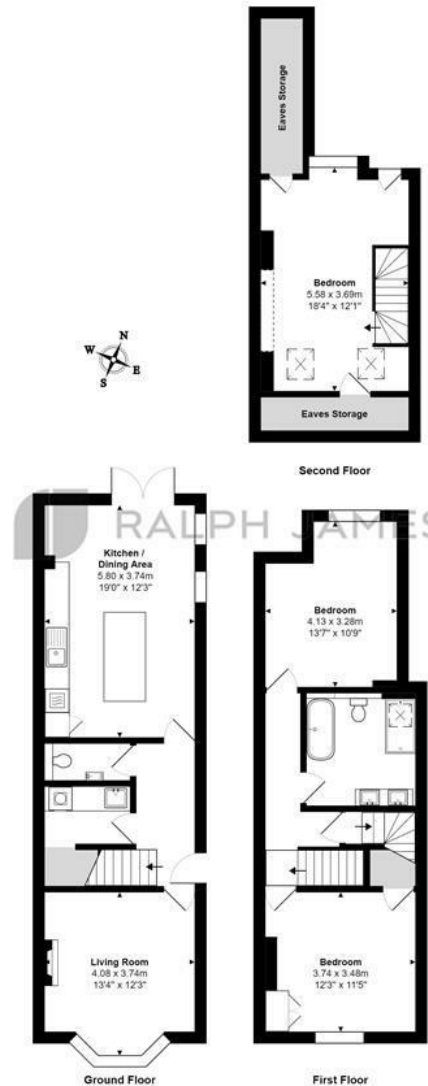
Need to know

- Gorgeous period home, less than half a mile to Reigate station
- Semi detached with three good size, double bedrooms
- Beautifully extended kitchen, with large island, opening onto rear garden through French doors
- Separate living room with feature fireplace
- Attractive rear garden, with two seating areas, side access and shed
- Useful utility room and separate downstairs cloakroom
- Family bathroom with large walk in shower, twin basins and separate bath
- Approximately 0.3 miles to Reigate High Street with a variety of shops, restaurants and coffee shops
- Walking distance to a selection of excellent local schools, including Reigate Priory, Holmesdale Community Infants, Micklefield, Reigate Grammar School and Reigate St Marys

Interested?

reigate@ralphjames.co.uk
01737 333677

ralphjames.co.uk



Yorke Road, Reigate
Total Area: 122.4 m² ... 1317 ft²
FOR ILLUSTRATIVE PURPOSES ONLY

Whilst every attempt has been made to ensure the accuracy of the floor plan shown, all measurements, positioning, fixtures, features, fittings and any other data shown are an approximate interpretation for illustrative purposes only and are not to scale.

No responsibility is taken for any error, omission, mis-statement or use of data shown.

The above statement applies to both 'Still Moving London LTD' and the Company or individual displaying this floor plan.

Unauthorised reproduction prohibited.

© Still Moving London LTD (www.stillmovinglondon)