



Priory Road, Reigate
£450,000





“

Located on the outskirts of Reigate town, this Victorian terraced cottage offers a perfect blend of charm and convenience. With its period features and desirable location, this cottage offers a quintessential suburban lifestyle within reach of urban amenities.

”



This delightful Victorian cottage, dating back to around 1860, originally built to house brewers working at brewery across the road, sits on a popular residential street. Welcoming you upon arrival is a convenient porch at the front of the house, perfect for shedding shoes and coats before stepping inside. The spacious lounge boasts abundant natural light, creating a warm and inviting atmosphere. Moving towards the rear, you'll find the dining room, complete with handy under stairs storage and a decorative wood burning stove as a focal point. The kitchen is a standout feature, offering ample space, attractive units, and top-of-the-line appliances. Thoughtful design includes floor-to-ceiling storage units, maximizing functionality without sacrificing style. The ground floor is also home to a fully tiled bathroom, boasting modern fixtures that complement the home's character.

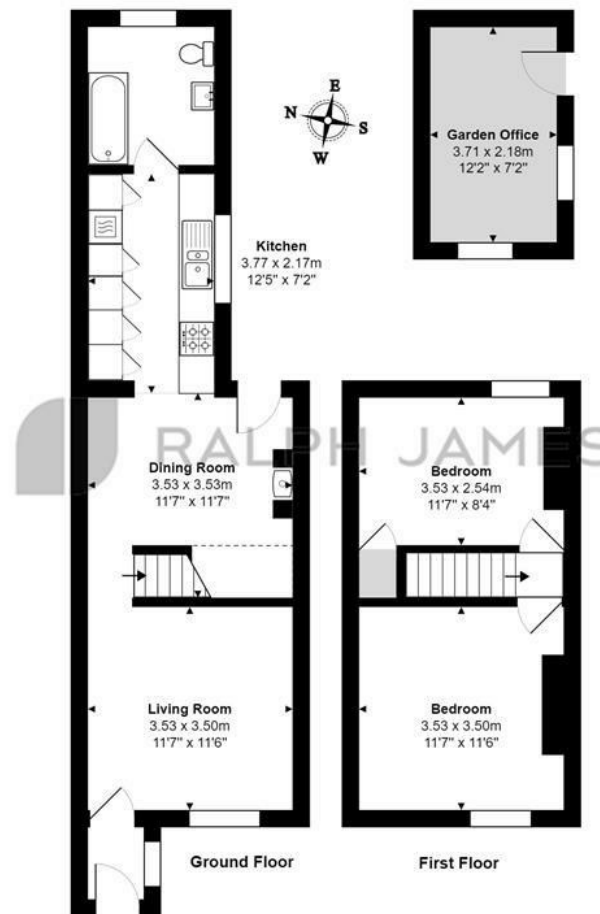
Upstairs, two generous double bedrooms await, with the primary bedroom offering particularly impressive proportions, while the second bedroom comes equipped with built-in storage solutions.

Externally, the property boasts a charming front garden, adding to its appeal, while the rear garden steals the spotlight. Surprisingly spacious for a property of this size, it features expansive patio areas for entertaining and a generous lawn. An impressive outbuilding adds to the property's versatility, currently utilized for remote work but adaptable to various uses.



Need to know

- Two double bedrooms
- Period cottage with original features
- Modern kitchen and bathroom
- Close to good local schools
- On the edge of Reigate town centre
- Large garden of over 100ft
- Large outbuilding currently used as an office
- Front porch



Interested?

reigate@ralphjames.co.uk

01737 333677

ralphjames.co.uk

Priory Road, Reigate
Total Area: 65.5 m² ... 705 ft² (excluding garden office)
FOR ILLUSTRATIVE PURPOSES ONLY.

Whilst every attempt has been made to ensure the accuracy of the floor plan shown, all measurements, positioning, fixtures, features, fittings and any other data shown are an approximate interpretation for illustrative purposes only and are not to scale.

No responsibility is taken for any error, omission, miss-statement or use of data shown.

The above statement applies to both 'Still Moving London LTD' and the Company or individual displaying this floor plan.

Unauthorised reproduction prohibited.

© Still Moving London LTD (www.stillmoving.london)

 RALPH JAMES