



Atherfield Road, Reigate

£260,000

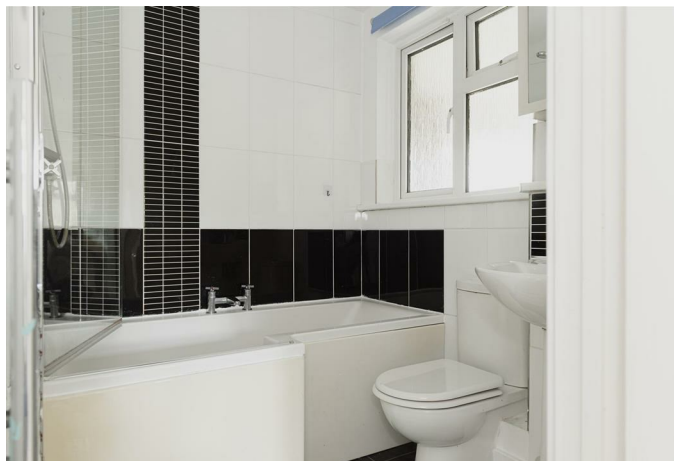




“

A conveniently located and spacious two bedroom apartment, ideal for first-time buyers and buy to let investors

”



This is a great opportunity for first-time buyers to get into the property market and for investors looking for a good buy-to-let option.

Inside the apartment, the rooms are spacious. The living room is bright and has nice views over the grounds.

The kitchen is modern and has plenty of space for cooking. Both bedrooms are a good size and share a recently renovated bathroom.

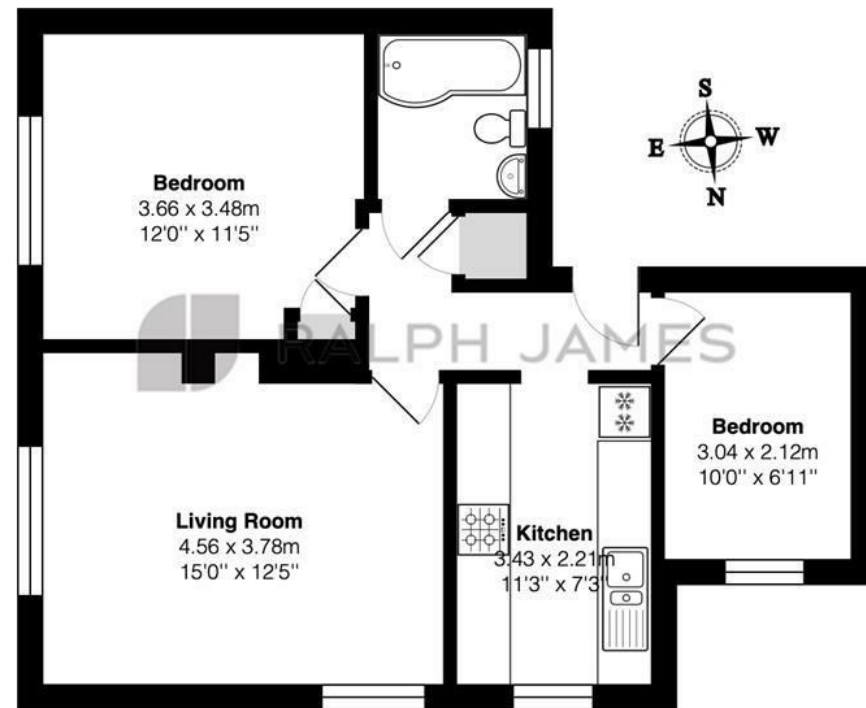
A big plus is the private garden, perfect for enjoying the sun. Plus, there are communal gardens and a secure storage shed at the back of the building.

Located in a quiet area close to shops and good schools, it's definitely worth checking out early.



Need to know

- Two bedroom, first floor apartment
- Dual aspect living/dining room
- Convenient location with shops and bus routes close by
- Gas central heating
- Excellent local schools
- Private garden as well as a communal garden to rear with a brick built storage shed
- Modern fitted kitchen and bathroom
- Double glazed throughout



First Floor

Atherfield Road, Reigate
Total Area: 54.2 m² ... 583 ft²
FOR ILLUSTRATIVE PURPOSES ONLY.

Whilst every attempt has been made to ensure the accuracy of the floor plan shown, all measurements, positioning, fixtures, features, fittings and any other data shown are an approximate interpretation for illustrative purposes only and are not to scale.

No responsibility is taken for any error, omission, miss-statement or use of data shown.

The above statement applies to both 'Still Moving London LTD' and the Company or individual displaying this floor plan.

Unauthorised reproduction prohibited.

Â© Still Moving London LTD (www.stillmoving.london)



Interested?

reigate@ralphjames.co.uk
01737 333677

ralphjames.co.uk