



Roebuck Close, Reigate

£110,000

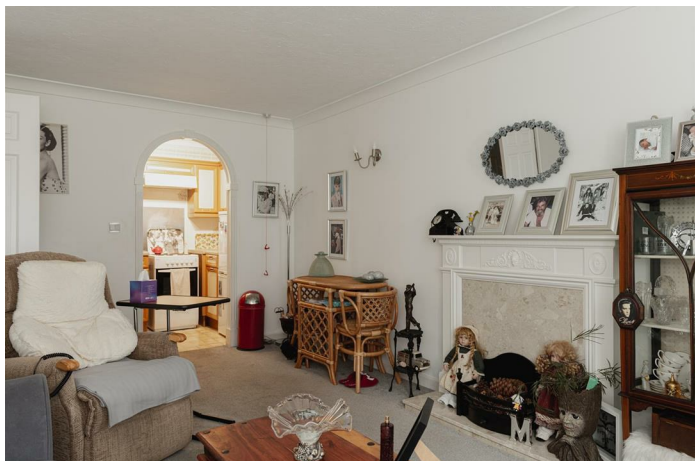




“

Nestled in the heart of Reigate Town, Churchfield Court combines convenience with a strong sense of community, making it an ideal retirement destination.

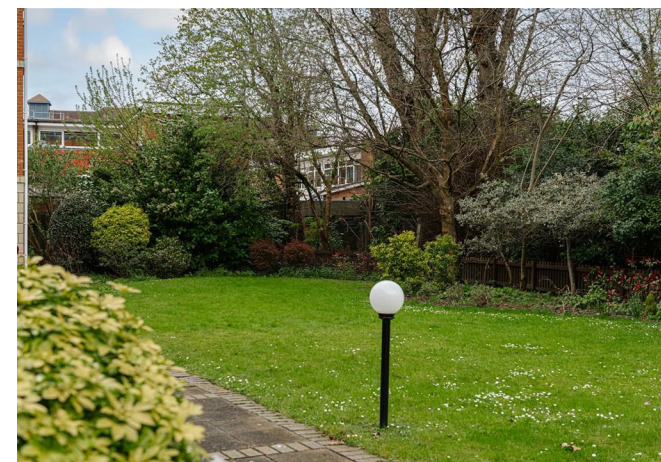
”



Situated on the ground level of a sought-after retirement complex in the centre of the historic market town of Reigate, this spacious 1-bedroom apartment offers comfort and convenience.

Featuring a double bedroom, ample lounge area, and direct access to a patio area, the accommodation is generously sized. Residents can also enjoy communal amenities such as parking, a lounge, tea room, laundry facilities, and a guest suite.

The town of Reigate boasts an excellent array of shops, from high street staples to boutique offerings, along with a variety of restaurants and numerous amenities.



Need to know

- Chain free
- Reigate town centre location
- Retirement apartment
- Ground floor, with private patio area
- Communal lounge, garden & laundry facilities
- On site warden 9am to 5pm Monday to Friday
- Walk-in shower
- Fitted Kitchen
- Double bedroom with built in wardrobes
- Level walking access to local amenities



Ground Floor Flat

Churchfield Court, Reigate

Total Area: 42.5 m² ... 457 ft²

FOR ILLUSTRATIVE PURPOSES ONLY.

Whilst every attempt has been made to ensure the accuracy of the floor plan shown, all measurements, positioning, fixtures, features, fittings and any other data shown are an approximate interpretation for illustrative purposes only and are not to scale.

No responsibility is taken for any error, omission, miss-statement or use of data shown.

The above statement applies to both 'Still Moving London LTD' and the Company or individual displaying this floor plan.

Unauthorised reproduction prohibited.

© Still Moving London LTD (www.stillmoving.london)

Interested?

reigate@ralphjames.co.uk
01737 333677

ralphjames.co.uk

