



Saxon Way, Reigate

Guide Price £500,000 - £525,000





Located just a stones throw from Reigate town centre, you have everything right on the doorstep. The property has been updated throughout and is ready to simply move straight in and enjoy.





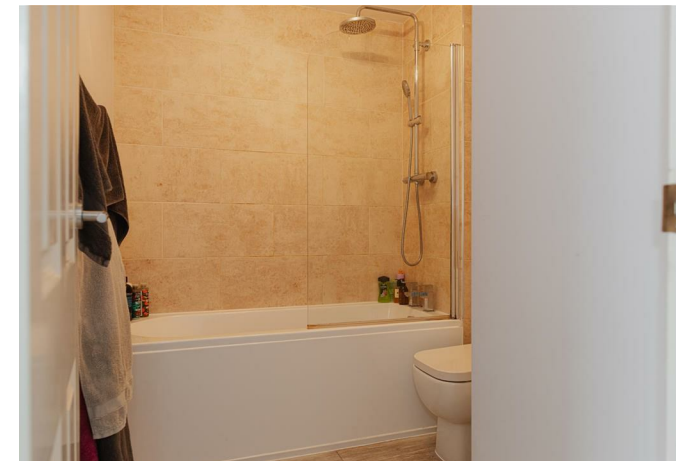
Guide Price £500,000 - £525,000

This mid terrace, three bedroom home is tucked away in a cul de sac, located just a short walk from Reigate High Street. The location is so convenient, you can easily walk to the train station, local schools, Priory Park, the Castle Grounds and the High Steet.

Typical of this era of build, the property is light and airy throughout and the owners have retained the original parquet flooring in the living room. The property has been updated throughout over recent years, including a new kitchen and bathroom, both of which have a modern feel to them.

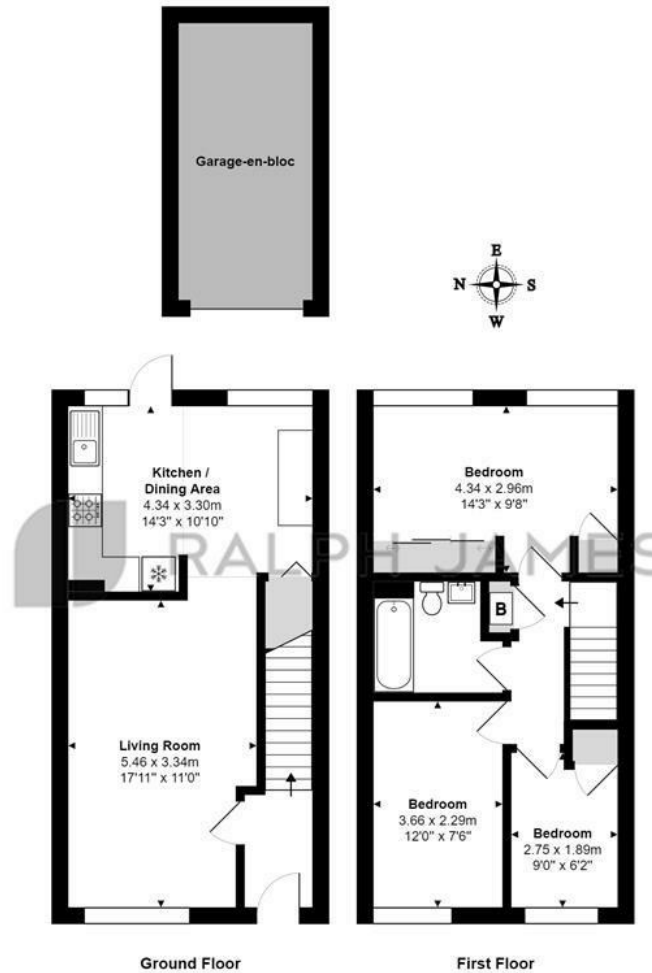
The lounge is semi open plan to the kitchen dining room, which provides a feeling of space and the light floods through the house from front to back. There is room for a table and chairs in the kitchen and this opens out to the rear garden. There is access through the garden gate to the garage at the rear, this has power and light and is ideal for keeping a spare freezer or tumble dryer.

Upstairs are two good size double bedrooms and a third single room.



Need to know

- Mid century terraced home in central Reigate
- Cul de sac location
- Half a mile to Reigate train station and local Co Op
- Walking distance to Reigate High Street
- Large, bright living room, opening onto kitchen dining room
- Three bedrooms, two of which are good size doubles
- Garage en bloc to the rear of the house
- Modern kitchen and bathroom
- Recently replaced roof
- EPC rating C



Interested?

reigate@ralphjames.co.uk
01737 333677

ralphjames.co.uk

Saxon Way, Reigate

Total Area: 77.4 m² ... 833 ft² (excluding garage-en-bloc)

FOR ILLUSTRATIVE PURPOSES ONLY.

Whilst every attempt has been made to ensure the accuracy of the floor plan shown, all measurements, positioning, fixtures, features, fittings and any other data shown are an approximate interpretation for illustrative purposes only and are not to scale.

No responsibility is taken for any error, omission, miss-statement or use of data shown.

The above statement applies to both 'Still Moving London LTD' and the Company or individual displaying this floor plan.

Unauthorised reproduction prohibited.

© Still Moving London LTD (www.stillmoving.london)

 RALPH JAMES