



# Tranquil Dale, Betchworth

Guide Price £650,000 - £700,000







“

This gorgeous character property is located in the heart of Buckland, nestled between the market towns of Reigate and Dorking. With fabulous views over open countryside you get a real sense of space and tranquility.

”





PRICE GUIDE £650,000 - £700,000

This characterful four bedroom home has plenty of space for any growing family. Beautifully updated and maintained by the current owners, it is ready to simply move straight in.

As you enter the house, there is a downstairs cloakroom and a cleverly designed snug room with inbuilt storage and seating. The lounge is a good size, yet feels cosy with the addition of a log burner. The kitchen dining space, with Belfast sink and range cooker, is the real hub of the home, stretching across the rear of the house and opening onto the fabulous rear garden.

Upstairs there is a family bathroom, two double bedrooms and a good sized single bedroom. On the second floor is the fourth bedroom, the master with modern en suite shower room. The bedroom boasts a large window, opening out to a Juliet balcony, making the most of the wonderful views over the garden and across to the Surrey Hills.

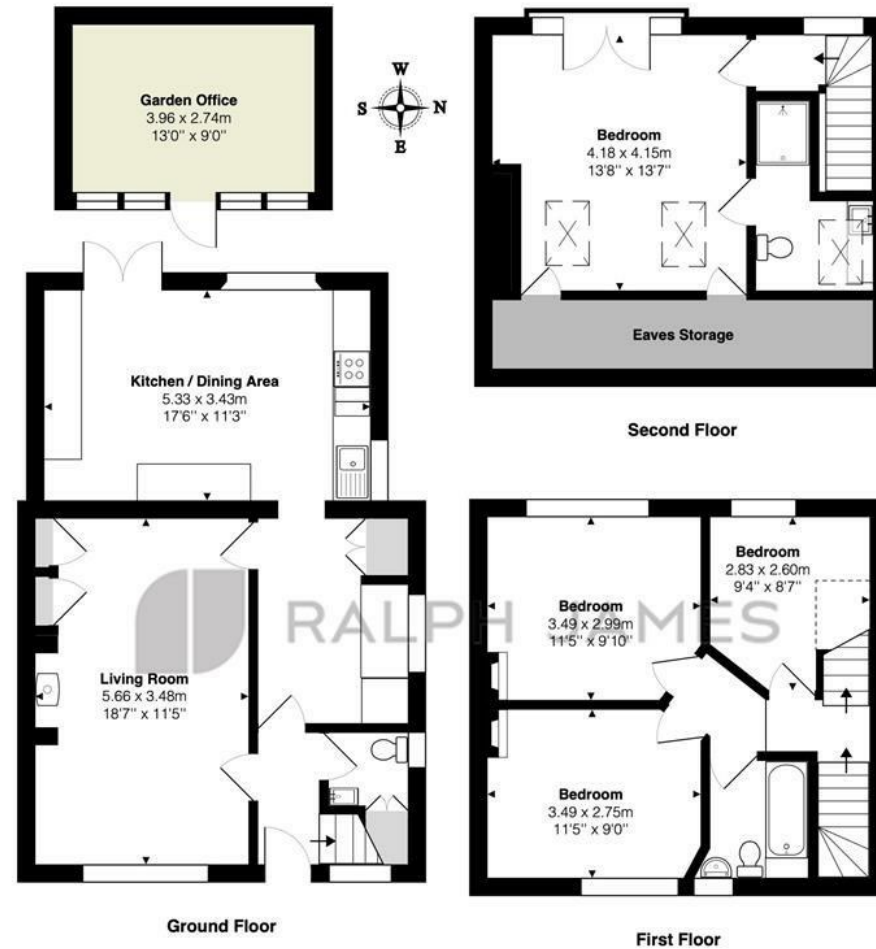
The piece de resistance here has got to be the wonderful west facing, 150ft rear garden. It has been beautifully landscaped with a generous patio area located to make the most of the sunshine and therefore perfect for outdoor dining. A mature garden of shrubs and fruit trees creates a peaceful haven to enjoy and with the open fields and Surrey Hills behind, it makes the perfect backdrop. A large garden shed provides additional storage and at the end of the garden overlooking the fields, can be found a double glazed home office with power.





## Need to know

- Four bedroom family home in excellent location between Reigate and Dorking
- Great living space with a good size lounge and log burner
- Family friendly kitchen/dining space, opening onto rear enclosed garden
- Downstairs cloakroom, family bathroom and en suite shower room
- Three double bedrooms and a good size single
- Light, neutral decor throughout creating an airy feel
- Stunning landscaped gardens with an open aspect towards the Surrey Hills and a garden home office
- Driveway providing off road parking
- Great local amenities including a selection of local country pubs, mini Waitrose and Buckland Deli nearby
- Walking distance to Betchworth train station



## Interested?

reigate@ralphjames.co.uk  
01737 333677

ralphjames.co.uk

Tranquil Dale, Buckland, Betchworth

Total Area: 125.2 m<sup>2</sup> ... 1347 ft<sup>2</sup> (excluding garden office)

FOR ILLUSTRATIVE PURPOSES ONLY:

Whilst every attempt has been made to ensure the accuracy of the floor plan shown, all measurements, positioning, fixtures, features, fittings and any other data shown are an approximate interpretation for illustrative purposes only and are not to scale.

No responsibility is taken for any error, omission, miss-statement or use of data shown.

The above statement applies to both 'Still Moving London LTD' and the Company or individual displaying this floor plan.

Unauthorised reproduction prohibited.

© Still Moving London LTD (www.stillmoving.london)