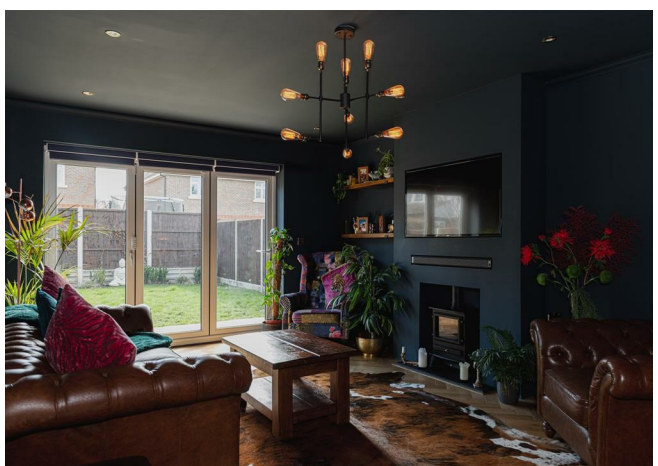




Beehive Way, Reigate

Guide Price £1,000,000 - £1,100,000





“

With the wow-factor in every room - this fabulously stylish and modern family home is found in a quiet cul de sac and is perfectly placed for many popular local schools for all ages, including Reigate School, Dovers Green and Sandcross.

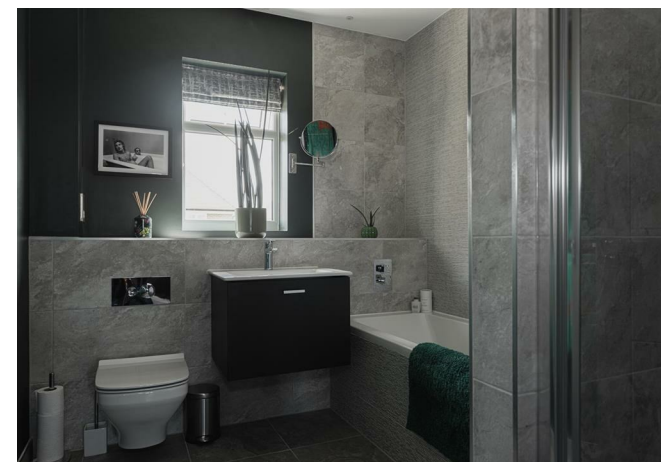
”



Guide Price £1,000,000 - £1,100,000
Built by award-winning Earlswood Homes in 2020 this modern detached, five bedroom property ticks all the boxes for any family looking for a luxurious home. The owners have given the property a stylish feel with bold touches of colour. The property is well set back with a large front garden, plenty of parking on the driveway and an integral garage.

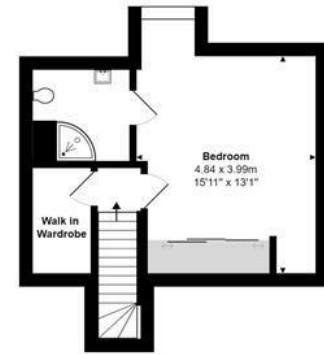
The welcoming hallway leads to the spacious, modern kitchen/diner with top of the range integrated appliances, breakfast bar with quartz worktops and large dining area. A separate utility room means the washing can always be hidden away and muddy boots stored as it opens out to the garden. The lounge has a log-burning stove for cosy nights in and bifold doors opening out to the garden. There is also a fabulous separate games room, which could be used as a number of things including a teenagers den or home office.

On the first floor is a guest suite with large dressing area and shower room and three further double bedrooms. There is plenty of storage and a modern family bathroom with bath and shower. The master suite occupies the top floor and has a walk-in wardrobe and ensuite shower room.

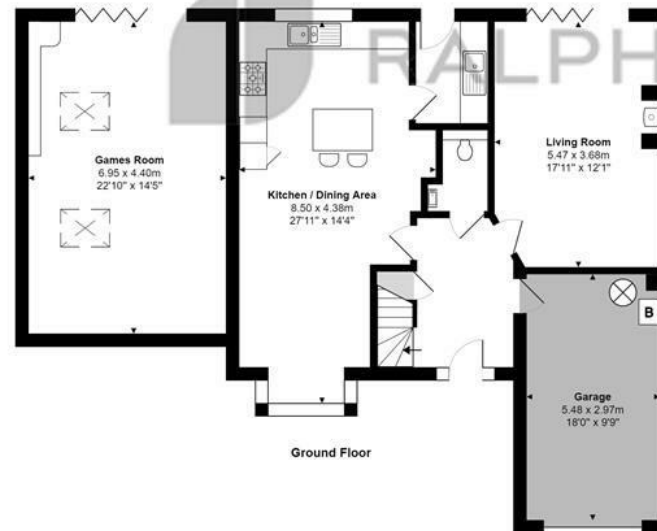


Need to know

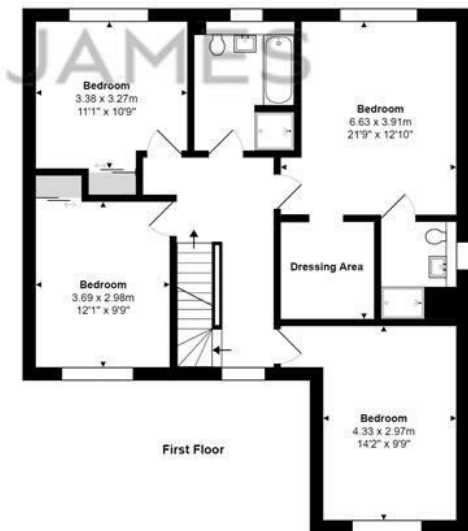
- Modern 5 bedroom detached home in a quiet cul de sac
- Off street parking for plenty of cars and a large integral garage
- Accommodation of 2485 Sq Ft
- High specification kitchen with integrated double oven, microwave, five ring gas hob, dishwasher & wine fridge
- Downstairs WC and separate utility room
- Family bathroom and two en suite shower rooms
- Large multi-use room currently gym/games room/bar with bifold doors opening out to the garden
- Front and rear gardens with large patio area
- Close to local amenities including local Co-op and other local shops and approximately one mile from Reigate High Street and Park
- Remainder of a 10 year new home warranty



Second Floor



Ground Floor



First Floor

Interested?

reigate@ralphjames.co.uk
01737 333677

ralphjames.co.uk

Beehive Way, Reigate
Total Area: 230.8 m² ... 2485 ft²
FOR ILLUSTRATIVE PURPOSES ONLY.

Whilst every attempt has been made to ensure the accuracy of the floor plan shown, all measurements, positioning, fixtures, features, fittings and any other data shown are an approximate interpretation for illustrative purposes only and are not to scale.
No responsibility is taken for any error, omission, mis-statement or use of data shown.

The above statement applies to both 'Still Moving London LTD' and the Company or individual displaying this floor plan.

Unauthorised reproduction prohibited.

© Still Moving London LTD (www.stillmoving.london)

 RALPH JAMES