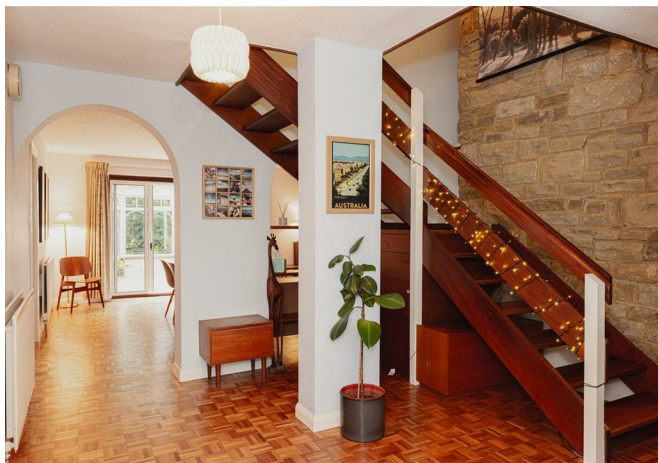




Raglan Road, Reigate

£1,250,000





Limewood House is a detached home in a fantastic location and has ample space for any growing family. The room sizes are generous and there is scope to put your own stamp on the kitchen or extend (STPP) if needed.





Limewood House is a 1970's detached home in a popular North Reigate location, within walking distance of Reigate station and with easy access of the M25. There are several local schools nearby, including Holmesdale Infants, Wray Common Primary and St Bedes.

Inside the property is bright and spacious, with typical features of this era being large windows and square rooms. The original parquet flooring runs through the hallway and into the dining room making the rooms flow together effortlessly. The lounge really has the 'wow' factor, with its vaulted ceiling and built in log burner and grey aluminum doors leading out to the rear garden.

The kitchen is a good size and overlooks the garden, with a useful utility/ boot room which is great for keeping things tidy. There is also a separate dining room as well as a family room and cloakroom on the ground floor.

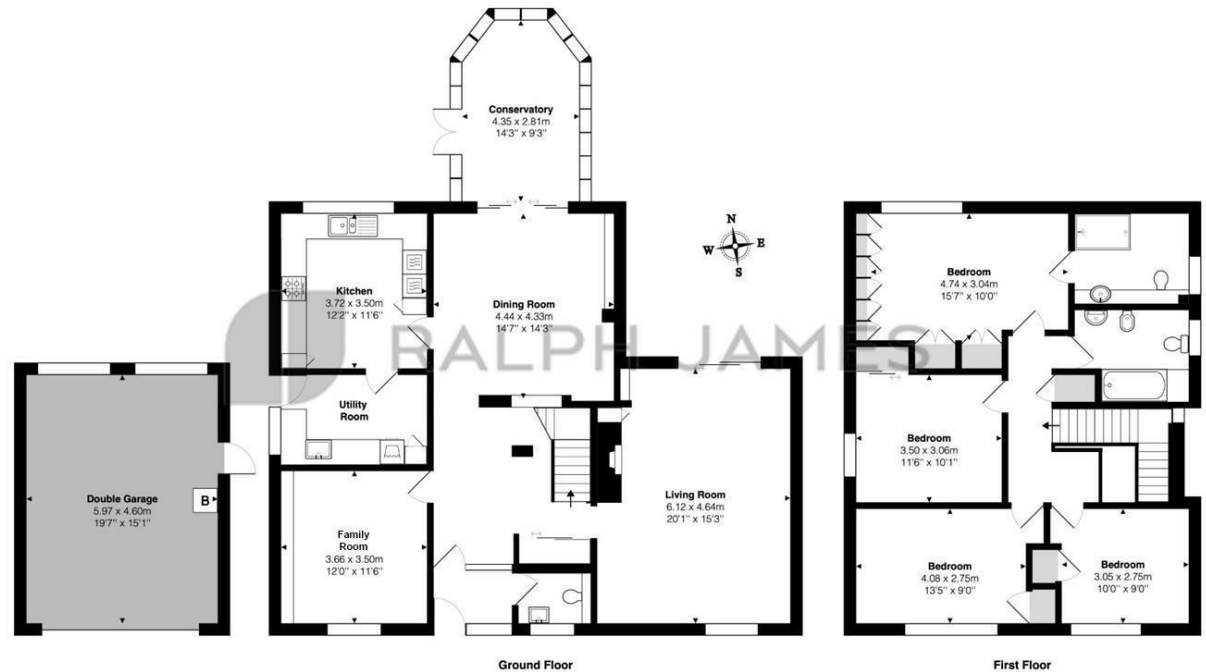
Upstairs there are four double bedrooms, all of which have built in wardrobes. The main bedroom at the rear of the house, has a large en suite shower room and there is a family bathroom as well.

Outside the property has a secluded rear garden with a selection of mature trees and plants and a great raised vegetable bed area. There is direct access to the double garage and an in and out driveway with parking for four cars.



Need to know

- Four double bedroom detached, family home in popular North Reigate location
- Bright and airy with generous room sizes throughout
- Large lounge with feature, vaulted ceiling and chimney with fitted log burner
- Good size dining room as well as separate family room
- Kitchen with separate utility room
- Double garage with electric door and in and out driveway for four cars
- Family bathroom, en suite shower room and modern downstairs cloakroom
- Less than 1 mile walk to Reigate train station and local shops
- Well proportioned room sizes throughout



Ground Floor

First Floor

Raglan Road, Reigate
Total Area: 222.2 m² ... 2392 ft²
FOR ILLUSTRATIVE PURPOSES ONLY.

Whilst every attempt has been made to ensure the accuracy of the floor plan shown, all measurements, positioning, fixtures, features, fittings and any other data shown are an approximate interpretation for illustrative purposes only and are not to scale.

No responsibility is taken for any error, omission, mis-statement or use of data shown.

The above statement applies to both 'Still Moving London LTD' and the Company or individual displaying this floor plan.

Unauthorised reproduction prohibited.

© Still Moving London LTD (www.stillmoving.london)



Interested?

reigate@ralphjames.co.uk
01737 333677

ralphjames.co.uk