

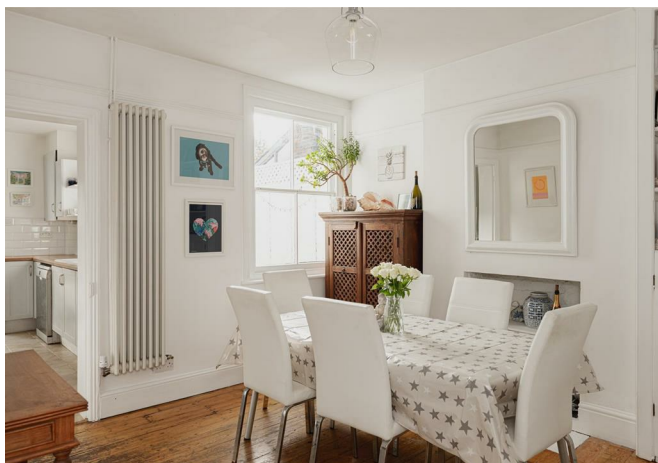


# Cockshot Road, Reigate

Offers Over £780,000







“

Location, location, location! This lovely home is so well placed for Reigate town centre and an array of the local schools. With local shops at Lesbourne Road being a short stroll away, it really does tick all the boxes!

”





This attractive period semi-detached property is in a sought after area which is popular for its close proximity to Reigate town centre as well as local shops at Lesbourne Road. It is close to a selection of good schools including Dunottar, Reigate Grammar, Reigate St Marys, Reigate Parish and Reigate School.

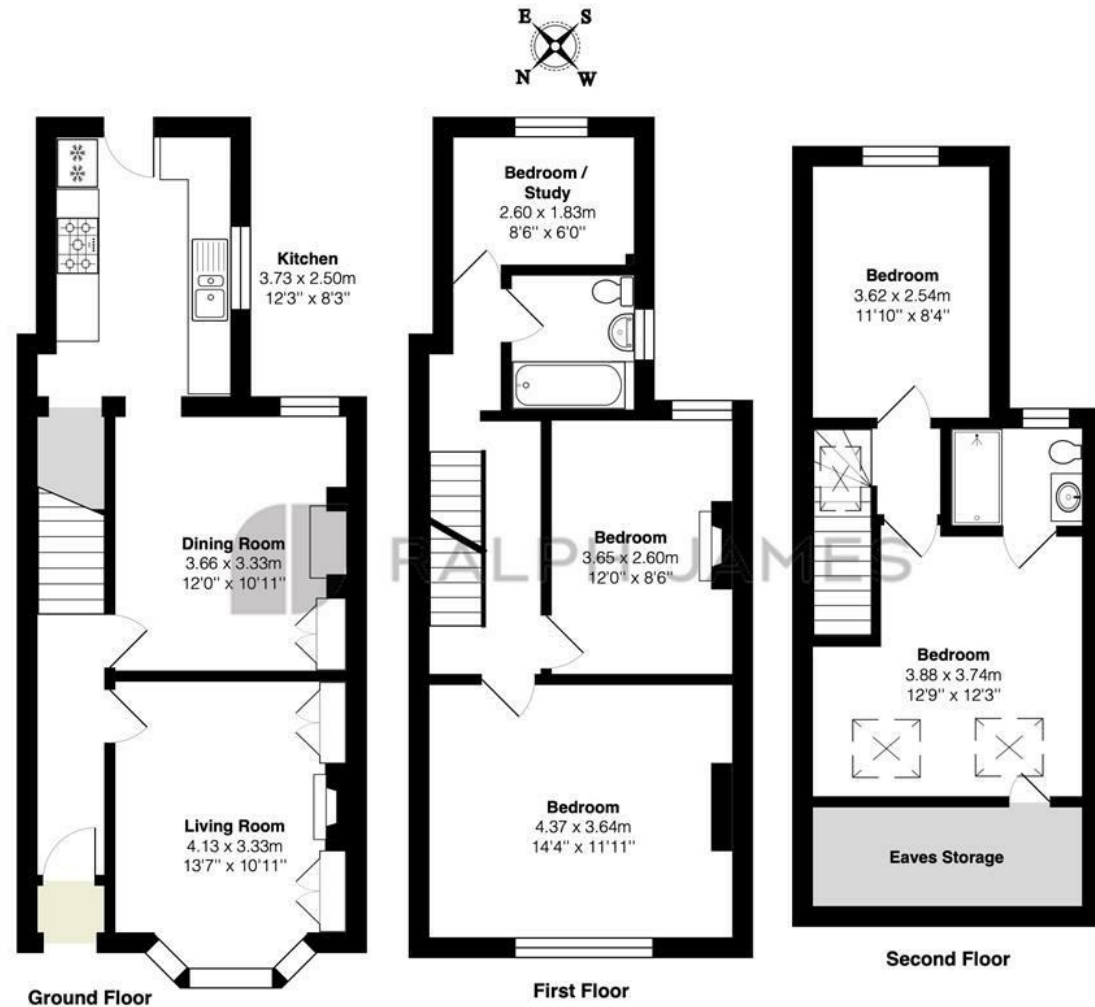
The property has spacious accommodation and neutral decor throughout giving it a bright and airy feel. Arranged over three floors the accommodation comprises of two good sized reception rooms and a kitchen which opens onto the rear garden. On the first floor are two double bedrooms as well as an office and the family bathroom. The loft has been converted to provide two further bedrooms, with the main bedroom having it's own en suite shower room and fabulous views towards St Marys church and Reigate Hill.

The sunny southerly facing garden is a real delight. It has a patio area to enjoy a BBQ and catch the last of the afternoon sun. The property also benefits from off road parking, which is such a bonus in this location.



## Need to know

- Gorgeous period property in popular residential area within walking distance to Reigate town centre
- Driveway providing off road parking
- Light neutral decor throughout
- Potential to extend the kitchen (STPP)
- Pretty Southerly facing rear garden with lovely decked area and rear access
- Four good size bedrooms as well as a separate office
- Family bathroom and en suite shower room
- Character features including fireplaces, original floorboards and picture rails
- Walking distance to Priory Park and a selection of local schools
- EPC rating D



Cockshot Road, Reigate  
Total Area: 124.0 m<sup>2</sup> ... 1335 ft<sup>2</sup>  
FOR ILLUSTRATIVE PURPOSES ONLY.

Whilst every attempt has been made to ensure the accuracy of the floor plan shown, all measurements, positioning, fixtures, features, fittings and any other data shown are an approximate interpretation for illustrative purposes only and are not to scale.

No responsibility is taken for any error, omission, miss-statement or use of data shown.

The above statement applies to both 'Still Moving London LTD' and the Company or individual displaying this floor plan.

Unauthorised reproduction prohibited.

© Still Moving London LTD (www.stillmoving.london)

## Interested?

reigate@ralphjames.co.uk  
01737 333677

ralphjames.co.uk