



Park House, Bell Street, Reigate

Offers in Excess of £280,000





“

Located in the heart of Reigate, this one bedroom apartment has its own outside space, a real rarity in such a central location. It is conveniently placed for the town and Priory Park and well as Reigate station, making it ideal for First Time Buyers and investors alike.

”



Park House is a development of converted apartments nestled in the heart of Reigate's vibrant and sought-after neighbourhood.

These apartments offer a unique living experience that blends history and modernity. Each apartment has been thoughtfully designed and renovated to create a personalised living space that is different from the traditional apartment complex.

Step into the communal hallway and you'll immediately notice the bespoke designed art work by local artist @samtmart. Inside the apartment is a bright, open plan kitchen living space with patio doors leading to the private courtyard garden. A rarity in such a central location.

The property is located within walking distance of a variety of restaurants, cafes, and shops and really does offer the perfect balance of convenience and comfort.



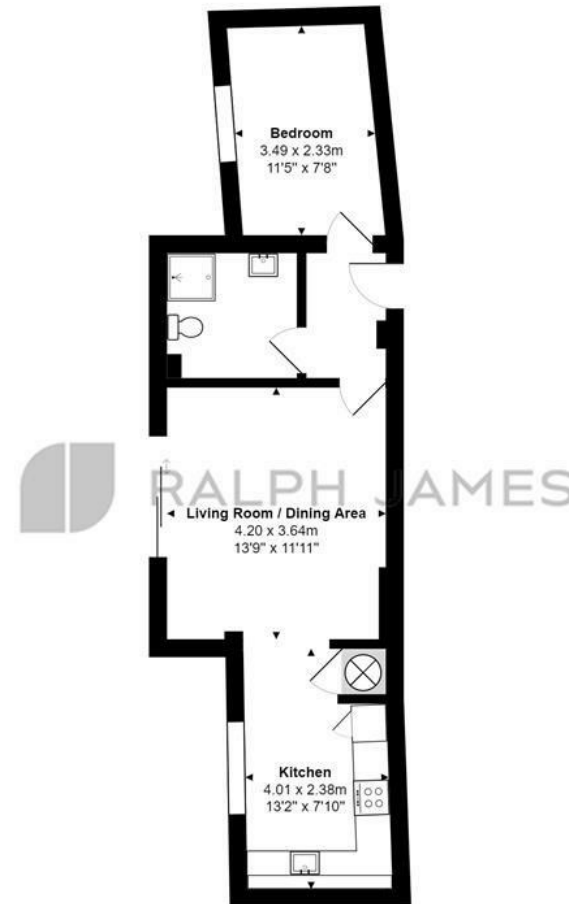
Need to know

- Great first purchase or investment opportunity
- Prime location in the heart of Reigate town centre
- Excellent specification with modern kitchen and integrated appliances
- Stylish herringbone flooring to main living spaces
- Open plan living space leading directly onto the private outdoor courtyard style garden
- Located opposite the renowned Priory Park
- Modern shower room with vanity sink
- Walking distance of shops, restaurants and station

Interested?

reigate@ralphjames.co.uk
01737 333677

ralphjames.co.uk



Ground Floor

Bell Street, Reigate
Total Area: 42.2 m² ... 454 ft²
FOR ILLUSTRATIVE PURPOSES ONLY.

Whilst every attempt has been made to ensure the accuracy of the floor plan shown, all measurements, positioning, fixtures, features, fittings and any other data shown are an approximate interpretation for illustrative purposes only and are not to scale.

No responsibility is taken for any error, omission, miss-statement or use of data shown.

The above statement applies to both 'Still Moving London LTD' and the Company or individual displaying this floor plan.

Unauthorised reproduction prohibited.

© Still Moving London LTD (www.stillmoving.london)