



41 NURSERY RISE

Dunmow, CM6 1XW


£695 PCM



COMMERCIAL | RESIDENTIAL | LETTINGS

www.jamesandco.net

- 1 Bedroom Home
- Gas Central Heating
- Garden
- Off Street Parking
- Available circa 6th August 2018
- No Pets
- No Smokers
- No Housing Benefit

Find us on  

COUNCIL TAX BAND

Tax band B

TENURE

%tenure%

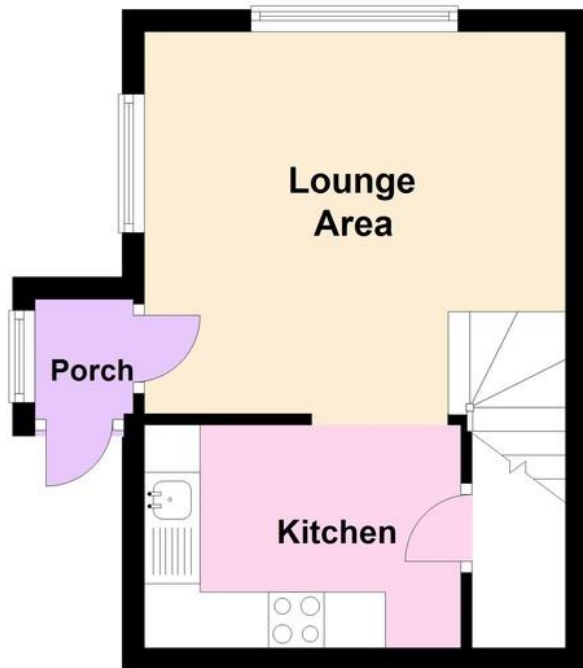
LOCAL AUTHORITY

Uttlesford District Council

Agents Note: Whilst every care has been taken to prepare these sales particulars, they are for guidance purposes only. All measurements are approximate and are for general guidance purposes only and whilst every care has been taken to ensure their accuracy, they should not be relied upon and potential buyers are advised to recheck the measurements

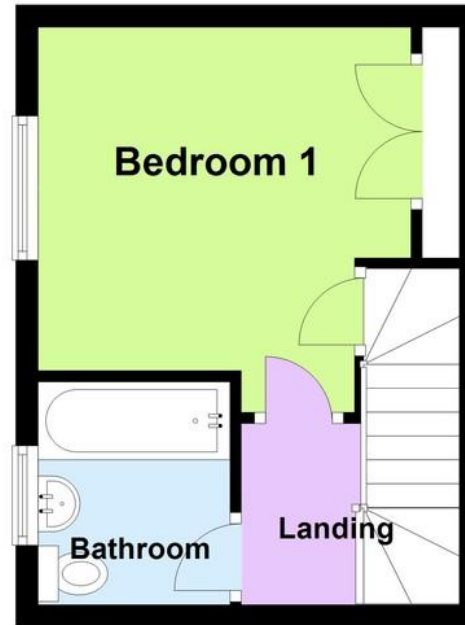
Ground Floor

Approx. 21.9 sq. metres (236.0 sq. feet)



First Floor

Approx. 19.6 sq. metres (210.8 sq. feet)



Total area: approx. 41.5 sq. metres (446.8 sq. feet)

The sizes and floor plan shown is intended only as a guide, all sizes are approximate and cannot be relied upon as fact.

Plan produced using PlanUp.

%epcGraph_c_1_239%



4 Stortford Road, Dunmow, Essex, CM6 1DA

01371 876678

info@jamesandco.net

www.jamesandco.net

