

Parkheath

Sold on Service

Estelle Road NW3

£4,250 PCM (£981 per week) - Camden Band F



Wonderful 4 bedroom triplex apartment

Reception with wood floor

Master bedroom with en suite

Moments to Hampstead Heath

Sunny, large decked roof terrace

High end kitchen/diner with all appliances

Shower room and separate guest wc

EPC Rating D, Council Tax: Camden band F

Belsize Park Office 020 7431 3104

Estelle Road

Approximate Gross Internal Area = 119.8 sq m / 1289 sq ft
(Excluding Eaves)

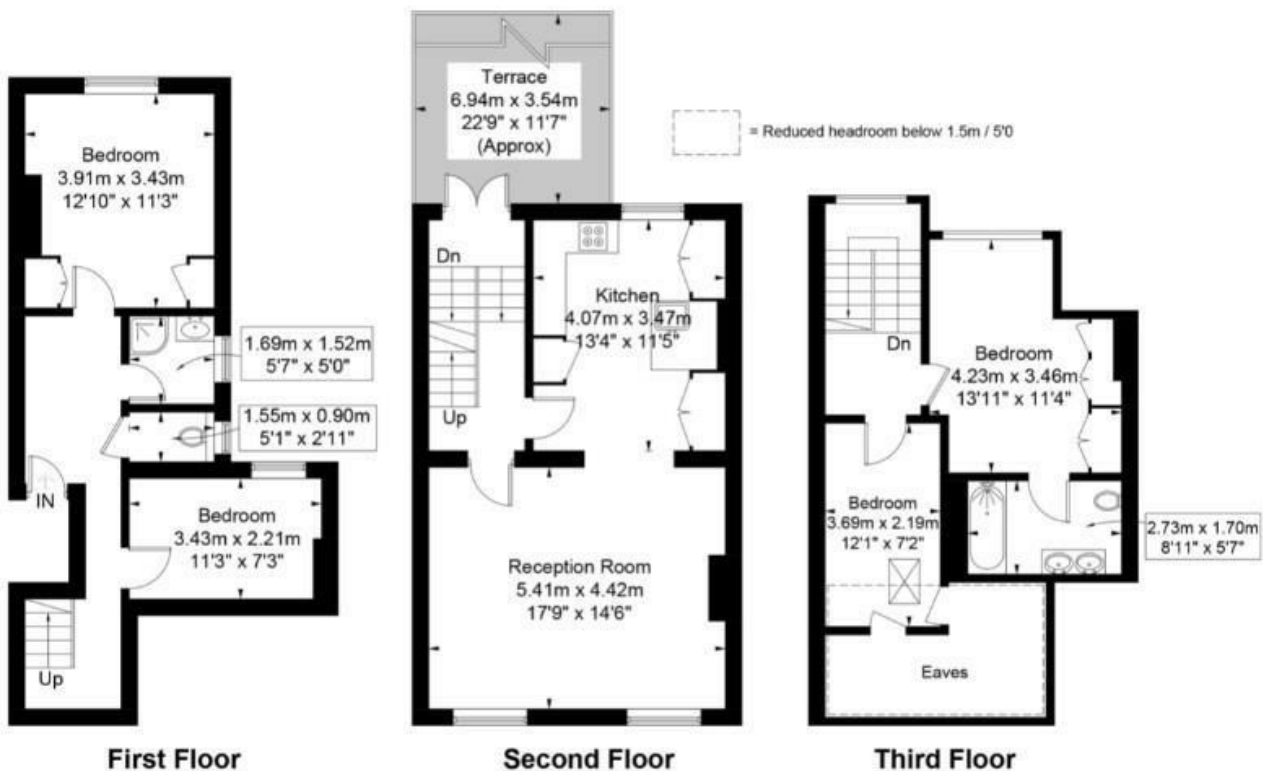


Illustration for identification purposes only, measurements are approximate,
not to scale. FloorplansUsketch.com © 2018 (ID412038)
ELLIE CLAIRE PHOTOGRAPHY LTD

The particulars do not constitute part of an offer or contract. The particulars, including text, photographs and plans, are for the guidance only of prospective purchasers/tenants and must not be relied upon as statements of fact. The descriptions provided therein represent the opinion of the author and whilst given in good faith should not be construed as statements of fact. Nothing in these particulars shall be deemed a statement that the property is in good condition or otherwise or that any services or facilities are in good working order. All measurements are approximate