

Parkheath

Sold on Service

Harley Road NW3

£3,750 PCM (£865 per week) - Camden Band E



SHORT LET

Beautiful period house conversion

Bright reception room

Luxury bathroom

Close to Primrose Hill's amenities

Smart 2 bedroom apartment

Contemporary decor and furnishings

Modern semi open plan kitchen

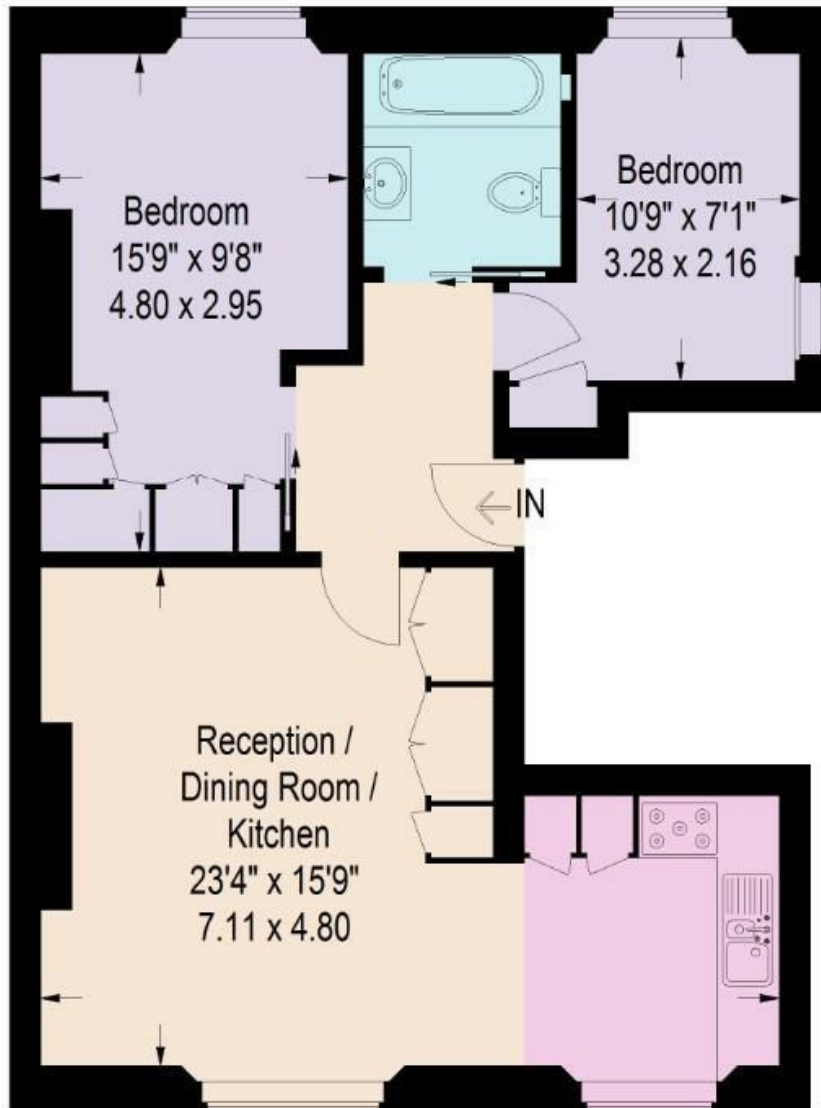
Moments to Swiss Cottage underground

EPC: Rating C, Council Tax: Camden band E

Belsize Park Office 020 7431 3104

Harley Road, NW3

Approximate Gross Internal Area
657 sq ft / 61.1 sq m



First Floor

Illustration for identification purposes only,
measurements are approximate, not to scale.

The particulars do not constitute part of an offer or contract. The particulars, including text, photographs and plans, are for the guidance only of prospective purchasers/tenants and must not be relied upon as statements of fact. The descriptions provided therein represent the opinion of the author and whilst given in good faith should not be construed as statements of fact. Nothing in these particulars shall be deemed a statement that the property is in good condition or otherwise or that any services or facilities are in good working order. All measurements are approximate