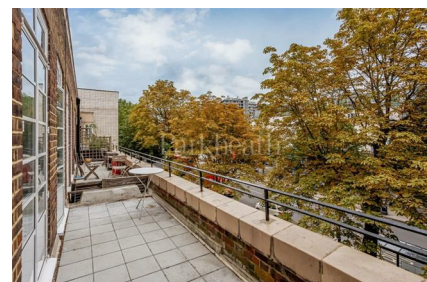


Parkheath

Sold on Service

Haverstock Hill NW3

£3,500 PCM (£808 per week) - Camden Band D

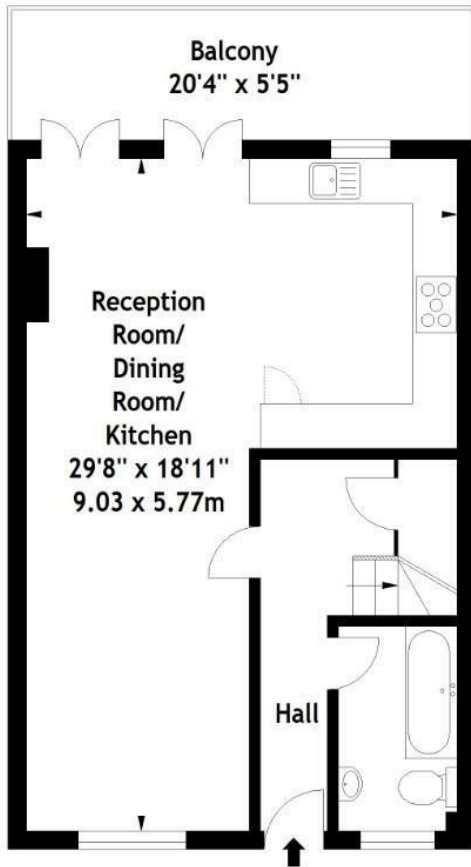


Contemporary 3 double bedroom duplex
Wood floors and neutral decor
Spacious 29' reception
2 bathrooms
Located amongst the areas shops and cafes

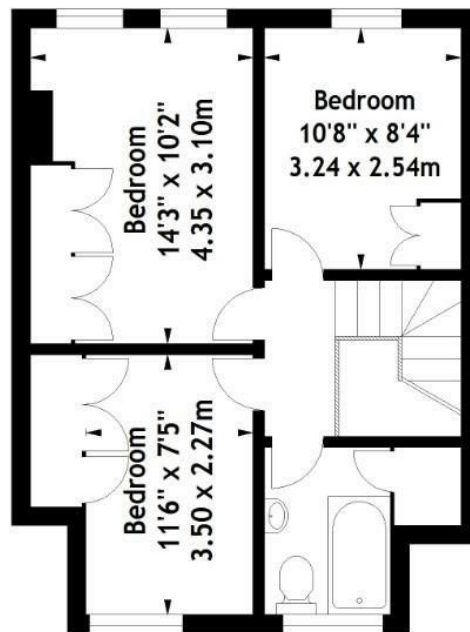
Private decked terrace
2nd & 3rd floors in purpose built block
Semi open plan luxury kitchen with all appliances
Adjacent to Belsize Park underground
EPC: Rating C, Council Tax: Camden band D

Belsize Park Office 020 7431 3104

Hillfield Mansions, NW3
Approx. Gross Internal Area
1034 Sq Ft - 96.06 Sq M



Second Floor 564 sqft



Third Floor 470 sqft

Measured in accordance with RICS guidelines. Every attempt is made to ensure accuracy, however all measurements are approximate. This floor plan is for illustrative purposes only and is not to scale.
© Datography Ltd 2014
Photographs * Floorplans * Virtual Tours
Tel: 0845 643 4401 www.datography.com

The particulars do not constitute part of an offer or contract. The particulars, including text, photographs and plans, are for the guidance only of prospective purchasers/tenants and must not be relied upon as statements of fact. The descriptions provided therein represent the opinion of the author and whilst given in good faith should not be construed as statements of fact. Nothing in these particulars shall be deemed a statement that the property is in good condition or otherwise or that any services or facilities are in good working order. All measurements are approximate