

Parkheath

Sold on Service

Lyndhurst Road NW3

£2,750 PCM (£635 per week) - Camden Band D



Smart and bright 2 double bedroom apartment

Reception with sensational skyline views

Main bedroom with en suite shower room

3 piece bathroom

Close to Hampstead and Belsize Park amenities

Top (3rd) floor in red brick period conversion

Separate kitchen with all appliances

2nd double bedroom with fitted wardrobes

Premier tree-lined road

EPC: Rating D, Council Tax: Camden band D

Belsize Park Office 020 7431 3104

Lyndhurst Road

Approximate Gross Internal Area = 70.3 sq m / 757 sq ft

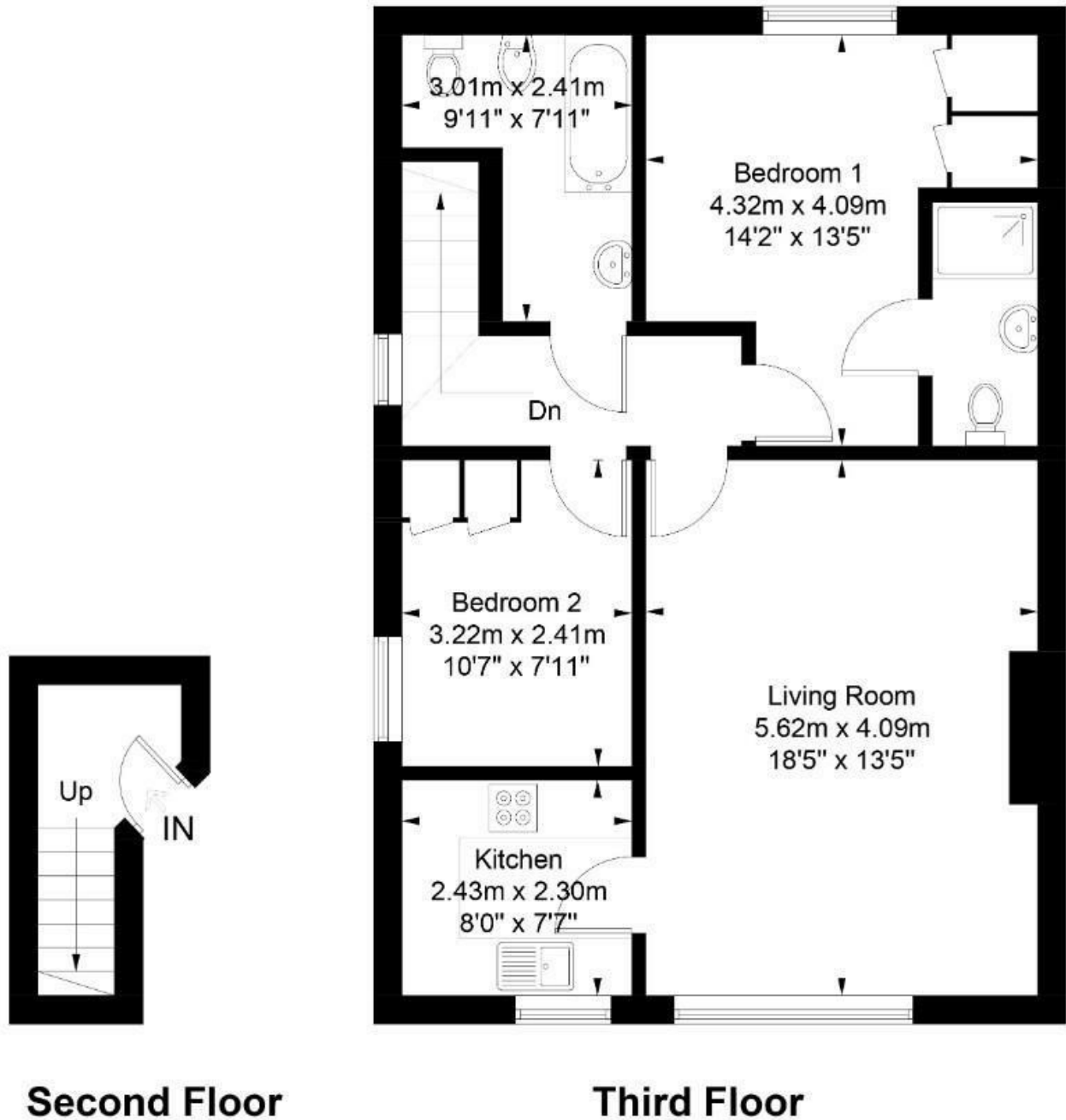


Illustration for identification purposes only, measurements are approximate,
not to scale. FloorplansUsketch.com © 2018 (ID438418)
ELLIE CLAIRE PHOTOGRAPHY LTD

The particulars do not constitute part of an offer or contract. The particulars, including text, photographs and plans, are for the guidance only of prospective purchasers/tenants and must not be relied upon as statements of fact. The descriptions provided therein represent the opinion of the author and whilst given in good faith should not be construed as statements of fact. Nothing in these particulars shall be deemed a statement that the property is in good condition or otherwise or that any services or facilities are in good working order. All measurements are approximate