

Parkheath

Sold on Service

Parkhill Road NW3
£3,700 PCM (£854 per week) - Camden Band E



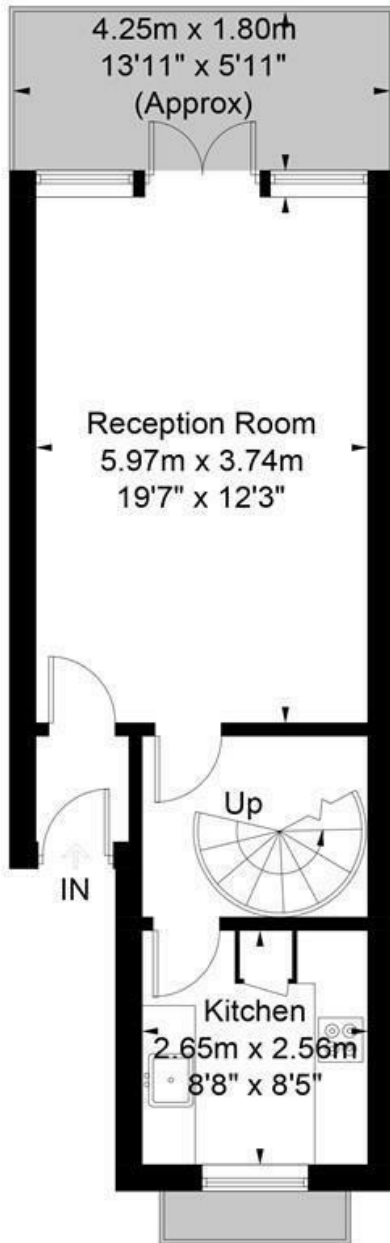
Stunning 2 bedroom, 2 bathroom maisonette
2 off street parking spaces
Modern kitchen with quartz worktop
Stripped wood floors

Full width balconies to reception and bedroom
Main bedroom with en suite shower room
Belsize Park tube is nearby
EPC: Rating C, Council Tax: Camden band E

Belsize Park Office 020 7431 3104

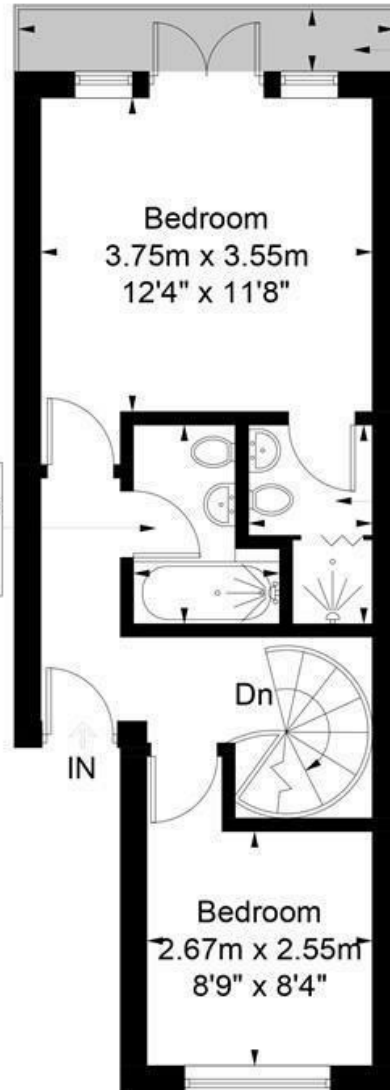
Parkhill Road

Approximate Gross Internal Area = 73.7 sq m / 793 sq ft



First Floor

2.25m x 1.65m
7'5" x 5'5"



4.25m x 0.70m
13'11" x 2'4"
(Approx)

2.22m x 1.41m
7'3" x 4'8"

Second Floor

Illustration for identification purposes only, measurements are approximate,
not to scale. FloorplansUsketch.com © 2019 (ID544332)
ELLIE CLAIRE PHOTOGRAPHY LTD

The particulars do not constitute part of an offer or contract. The particulars, including text, photographs and plans, are for the guidance only of prospective purchasers/tenants and must not be relied upon as statements of fact. The descriptions provided therein represent the opinion of the author and whilst given in good faith should not be construed as statements of fact. Nothing in these particulars shall be deemed a statement that the property is in good condition or otherwise or that any services or facilities are in good working order. All measurements are approximate