

# Parkheath

*Sold on Service*

---

**Ryland Road NW5**

**£3,000 PCM (£692 per week) - Camden Band E**



Stylish 2 bedroom apartment in a converted piano factory

Bright reception room with balcony

Main bedroom with walk-in wardrobe & en suite bathroom

Additional modern shower room/WC

Excellent location close to Kentish Town High Street

Secure gated development with lift access

Large semi open-plan fitted kitchen

Second bedroom/office with fitted storage

High ceilings, large windows & wood flooring throughout

EPC: Rating B, Council Tax: Camden Band E

Belsize Park Office 020 7431 3104

# Rydland Road

Approximate Gross Internal Area = 75.8 sq m / 816 sq ft

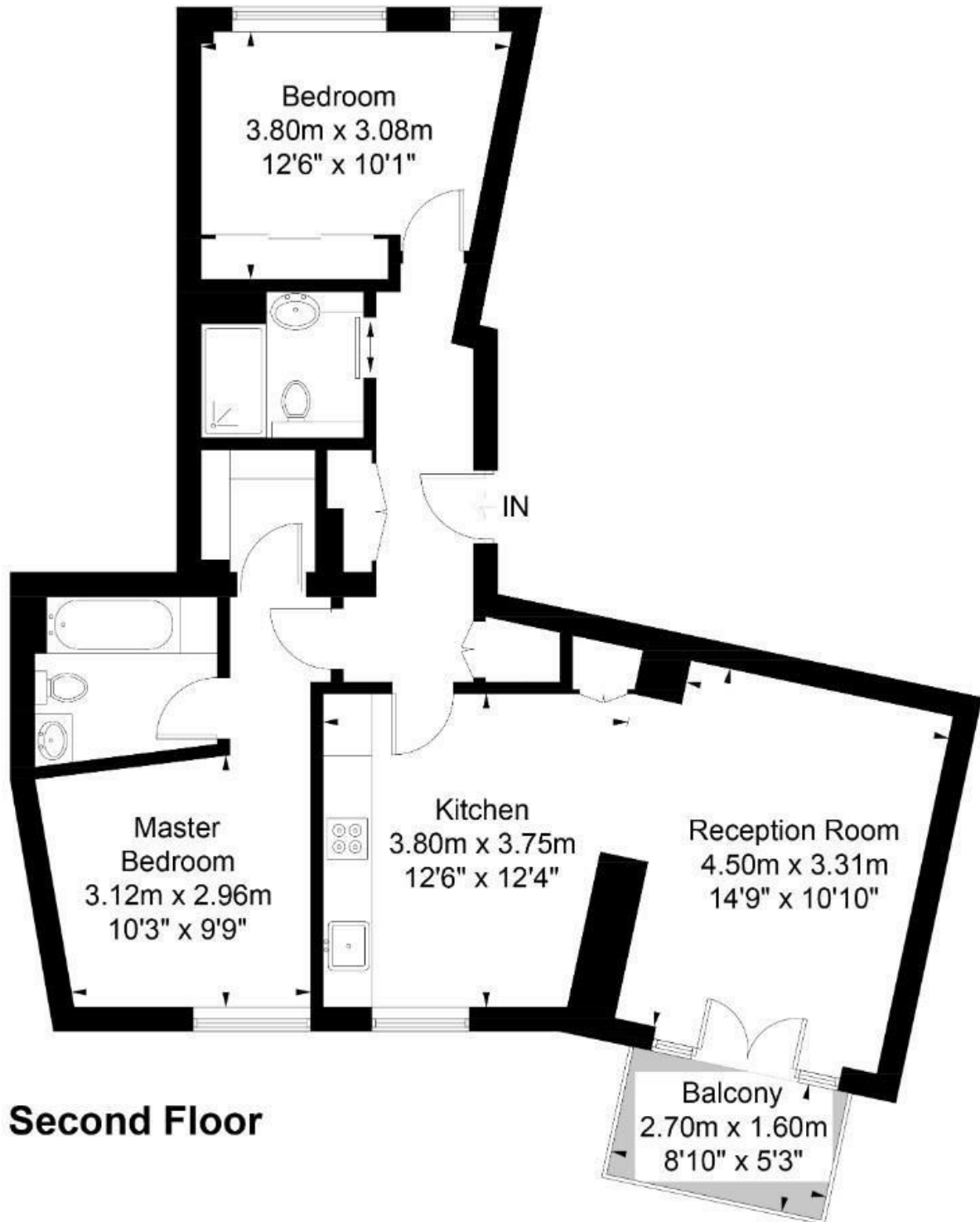


Illustration for identification purposes only, measurements are approximate, not to scale. FloorplansUsketch.com © 2018 (ID439789)  
ELLIE CLAIRE PHOTOGRAPHY LTD

The particulars do not constitute part of an offer or contract. The particulars, including text, photographs and plans, are for the guidance only of prospective purchasers/tenants and must not be relied upon as statements of fact. The descriptions provided therein represent the opinion of the author and whilst given in good faith should not be construed as statements of fact. Nothing in these particulars shall be deemed a statement that the property is in good condition or otherwise or that any services or facilities are in good working order. All measurements are approximate