



Courthope Road NW3

Parkheath  
*Sold on Service*





**Parkheath**  
*Sold on Service*

**Camden Tax band E**

## **Courthope Road, NW3**

### **Asking Price £785,000**

### **Share of Freehold**

- A fabulous 2 double bedroom, 2 bathroom flat with garden
- Sole use of 30ft rear patio/garden
- Set in hugely impressive double fronted period residence
- Entire first floor - over 720 sq ft
- Plenty of charm and character with high ceilings, coving and bay windows
- 14ft reception with wood flooring and bay windows with shutters
- 14ft kitchen/diner with door to steps leading to garden
- 2 double bedrooms (one with en suite shower room)
- Share of freehold
- Situated in the Mansfield Conservation area, moments from Hampstead Heath, ideal for South End Green, Belsize Park and Gospel Oak.

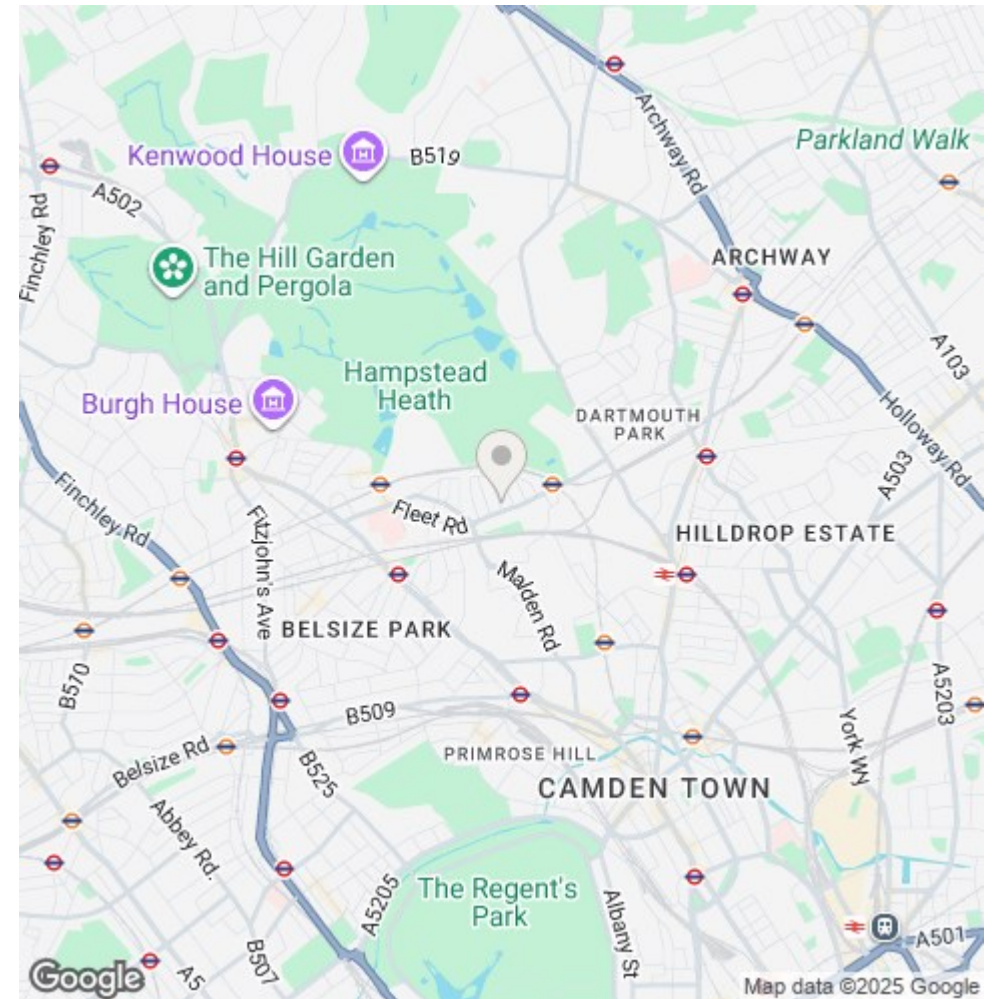
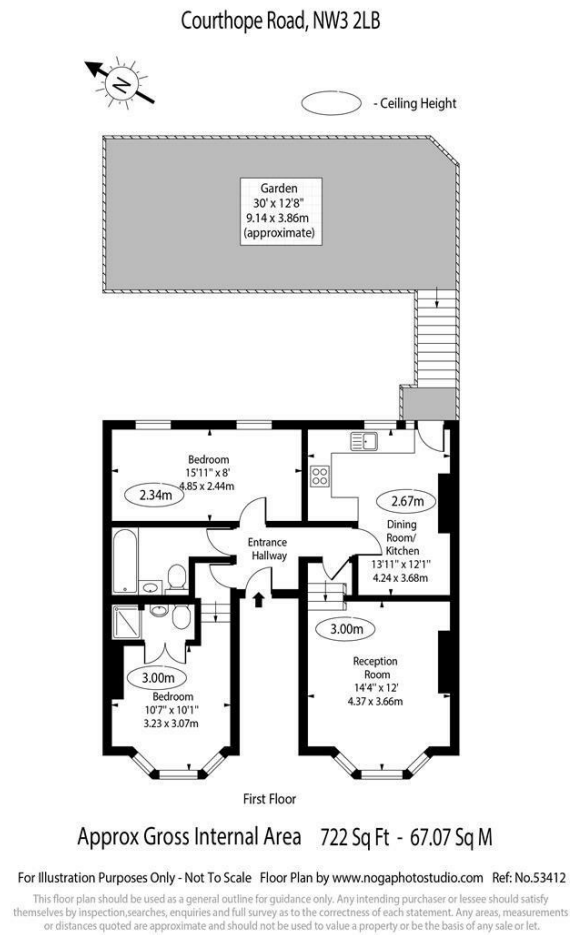
Belsize Park/Hampstead  
208 Haverstock Hill  
NW3 2AG  
Sales 020 7431 1234  
Lettings 020 7431 3104  
[nw3@parkheath.com](mailto:nw3@parkheath.com)

Kensal Rise  
54-56 Chamberlayne Rd  
NW10 3JH  
Tel 020 8960 4845  
[kensal@parkheath.com](mailto:kensal@parkheath.com)

South/West Hampstead  
192 West End Lane  
NW6 1SG  
Sales & Lettings  
Tel 020 7794 7111  
[192@parkheath.com](mailto:192@parkheath.com)

Property Management  
192 West End Lane  
NW6 1SG  
020 7433 6174  
[pm@parkheath.com](mailto:pm@parkheath.com)

[www.parkheath.com](http://www.parkheath.com)



The particulars do not constitute part of an offer or contract. The particulars, including text, photographs and plans, are for the guidance only of prospective purchasers/tenants and must not be relied upon as statements of fact. The descriptions provided therein represent the opinion of the author and whilst given in good faith should not be construed as statements of fact. Nothing in these particulars shall be deemed a statement that the property is in good condition or otherwise or that any services or facilities are in good working order. All measurements are approximate