

# Parkheath

*Sold on Service*

---

**Belsize Lane NW3**

**£1,850 PCM (£427 per week) - Camden Band D**



Well presented 1 bedroom apartment

Wood floors throughout

Good size double bedroom

Situated in the heart of Belsize Village

2nd floor above commercial premises

Separate modern kitchen

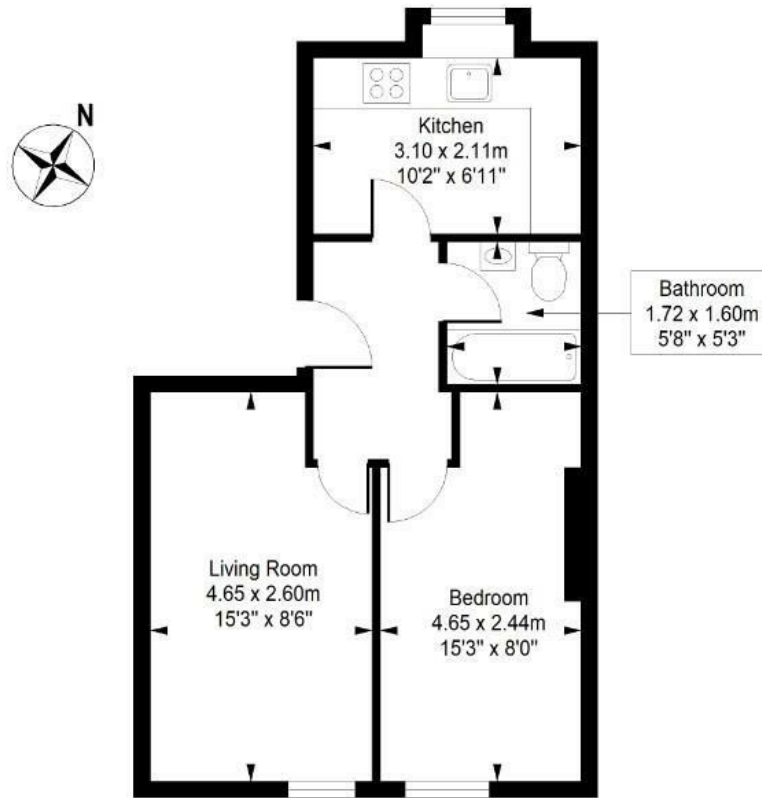
3 piece bathroom

EPC: Rating C, Council Tax: Camden band D

Belsize Park Office 020 7431 3104

## Belsize Lane

Approximate Gross Internal Area = 37.1 Sq m / 399 Sq ft



## Second Floor

This plan is for layout guidance only. Drawn in accordance with RICS guidelines. Not drawn to scale unless stated. Windows & door openings are approximate. Whilst every care is taken in the preparation of this plan, please check all dimensions, shapes & compass bearings before marking any decisions reliant upon them.

ELLIE CLAIRE PHOTOGRAPHY LTD  
[www.ellieclairephotography.com](http://www.ellieclairephotography.com)

The particulars do not constitute part of an offer or contract. The particulars, including text, photographs and plans, are for the guidance only of prospective purchasers/tenants and must not be relied upon as statements of fact. The descriptions provided therein represent the opinion of the author and whilst given in good faith should not be construed as statements of fact. Nothing in these particulars shall be deemed a statement that the property is in good condition or otherwise or that any services or facilities are in good working order. All measurements are approximate