

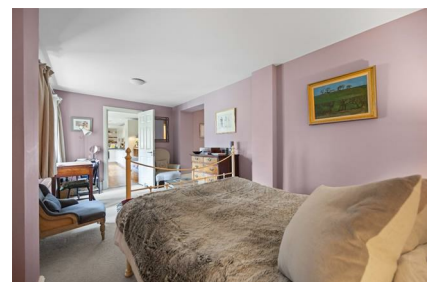
# Parkheath

*Sold on Service*

---

**Ryland Road NW5**

**£2,500 PCM (£578 per week) - Camden Band E**



Delightful and characterful 2 bedroom apartment  
Communal gardens and secure parking  
Reception with wood floors  
2 bathrooms  
Moments from Kentish Town's transport links

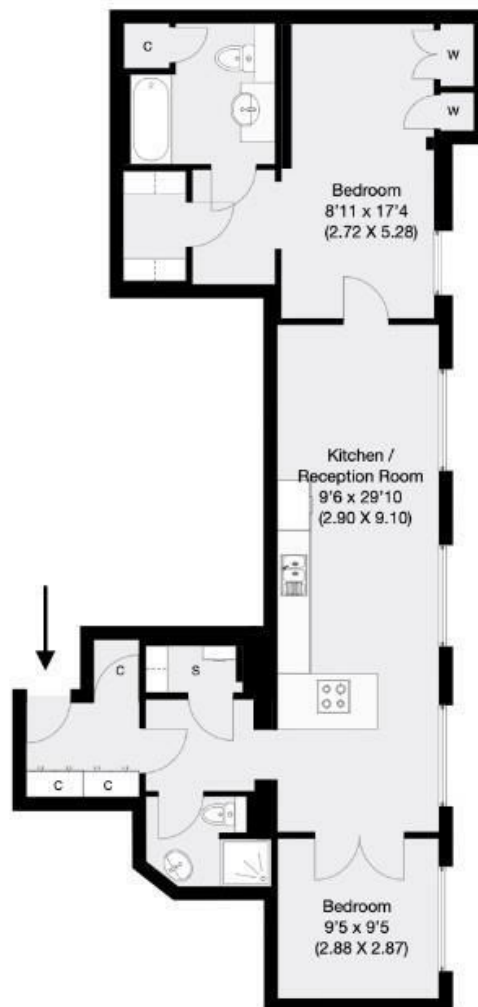
First floor in this renowned listed Victorian conversion  
Natural light with tranquil outlook of the courtyard  
High end open plan kitchen  
Utility cupboard and storage  
EPC: Rating C, Council Tax: Camden band E

Belsize Park Office 020 7431 3104



## Hampstead Gates, Ryland Road, NW5

Approximate Gross Internal Area 79.2 sqm / 853 sqft



### First Floor

THIS FLOOR PLAN IS PRODUCED FOR PARKHEATH SUBMITTED BY

ARCHIMEDIA

web: [www.archi-media.co.uk](http://www.archi-media.co.uk)

Whilst every attempt has been made to ensure the accuracy of the floor plan contained here, measurements of doors, windows and rooms are approximate and no responsibility is taken for any error, omission or misstatement. These plans are for representation purposes only and should be used as such by any prospective buyer or lease. Specifically no guarantee is given on the gross internal floor area of the property if quoted on this plan and any figures given is initial guidance only and should be treated as such.

The particulars do not constitute part of an offer or contract. The particulars, including text, photographs and plans, are for the guidance only of prospective purchasers/tenants and must not be relied upon as statements of fact. The descriptions provided therein represent the opinion of the author and whilst given in good faith should not be construed as statements of fact. Nothing in these particulars shall be deemed a statement that the property is in good condition or otherwise or that any services or facilities are in good working order. All measurements are approximate