

# Parkheath

*Sold on Service*

---

**Eton Road NW3**

**£2,100 PCM (£485 per week) - Camden Band D**

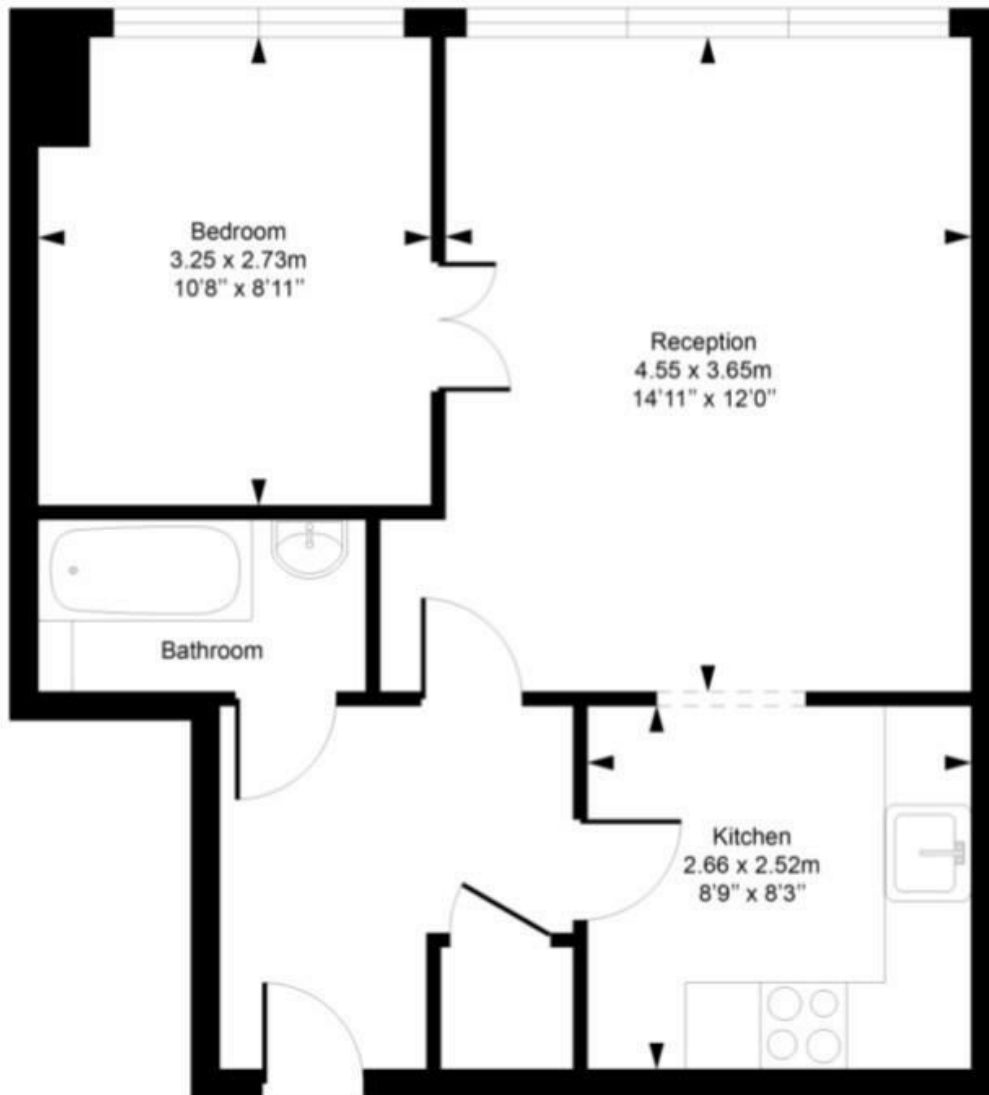


Well presented 1 bedroom apartment  
Communal garden and lift  
Airy reception  
Double bedroom  
Close to Swiss Cottage and Chalk Farm tubes

1st floor in modern purpose built block  
Wood floors throughout  
Open plan kitchen with all appliances  
3 piece bathroom  
EPC: Rating C, Council Tax: Camden band D

Belsize Park Office 020 7431 3104

**Provost Court, Eton Road**  
Approximate Gross Internal Area = 43.1 Sq m / 464 sq ft



**First Floor**

Measured in accordance with RICS guidelines. Every attempt is made to ensure accuracy  
However all measurements are approximate.  
The floor plan is illustrative purposes only and is not to scale  
ELLIE CLAIRE PHOTOGRAPHY LTD  
[www.ellieclairephotography.com](http://www.ellieclairephotography.com)

The particulars do not constitute part of an offer or contract. The particulars, including text, photographs and plans, are for the guidance only of prospective purchasers/tenants and must not be relied upon as statements of fact. The descriptions provided therein represent the opinion of the author and whilst given in good faith should not be construed as statements of fact. Nothing in these particulars shall be deemed a statement that the property is in good condition or otherwise or that any services or facilities are in good working order. All measurements are approximate