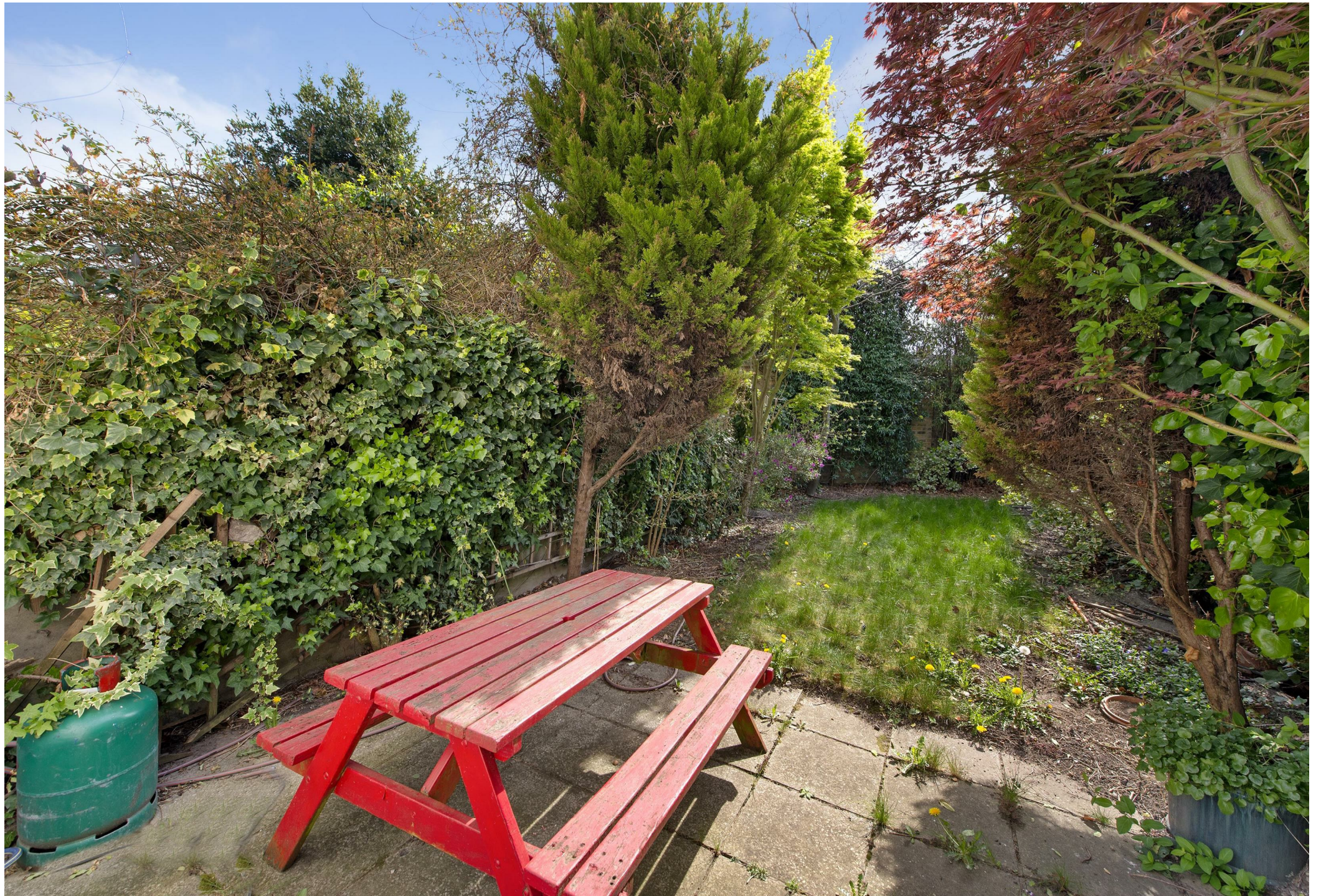




Prince Of Wales Road NW5

Parkheath  
*Sold on Service*









**Parkheath**  
*Sold on Service*

**Camden Tax band E**

## **Prince Of Wales Road, NW5** **Asking Price £1,000,000** **Share of Freehold**

- An outstanding garden maisonette
- 2 bedrooms, 2 receptions, 2 bathrooms
- Entire raised and lower ground floors - over 1000 sq ft
- Set in this attractive period conversion
- Sole use of the south facing 41ft garden
- Plenty of charm and character and offered in good decorative order
- 16ft bay fronted reception plus 13ft dining room
- 2 large double bedrooms
- Share of freehold
- Close to Chalk Farm, Primrose Hill, Belsize Park and Kentish Town

Belsize Park/Hampstead  
208 Haverstock Hill  
NW3 2AG  
Sales 020 7431 1234  
Lettings 020 7431 3104  
[nw3@parkheath.com](mailto:nw3@parkheath.com)

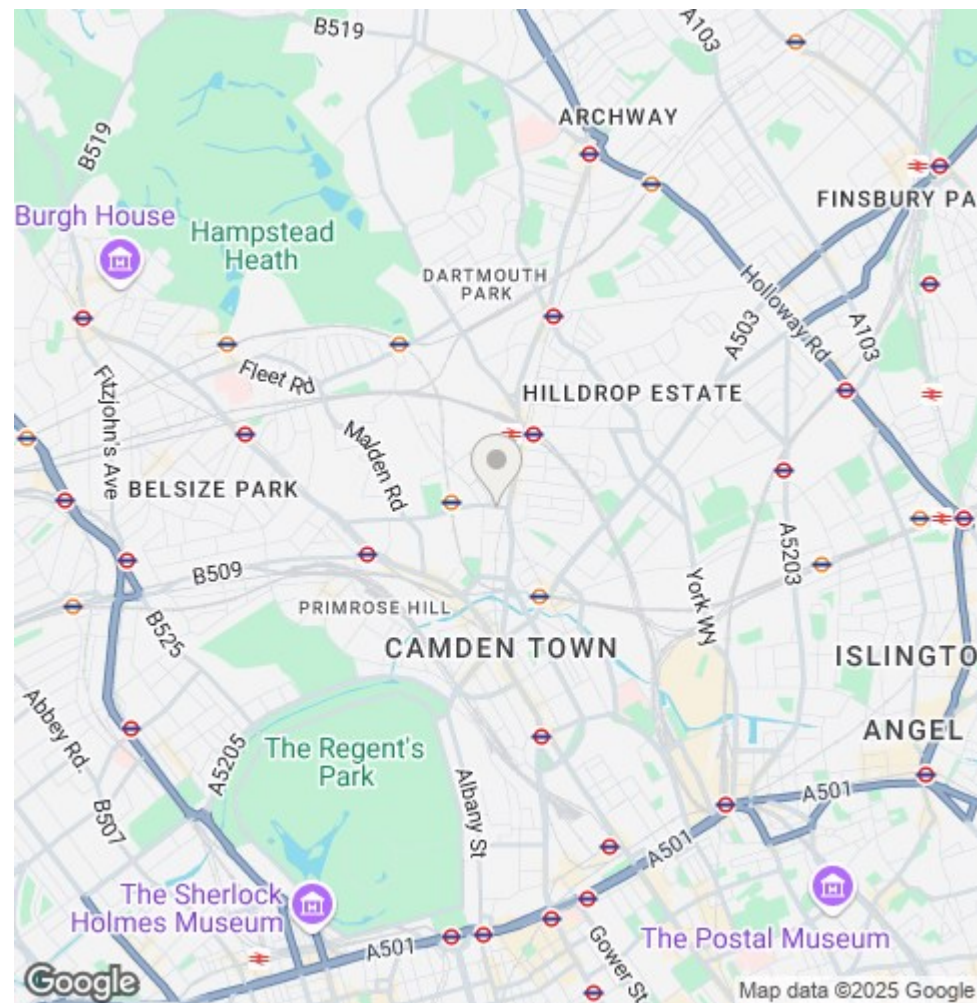
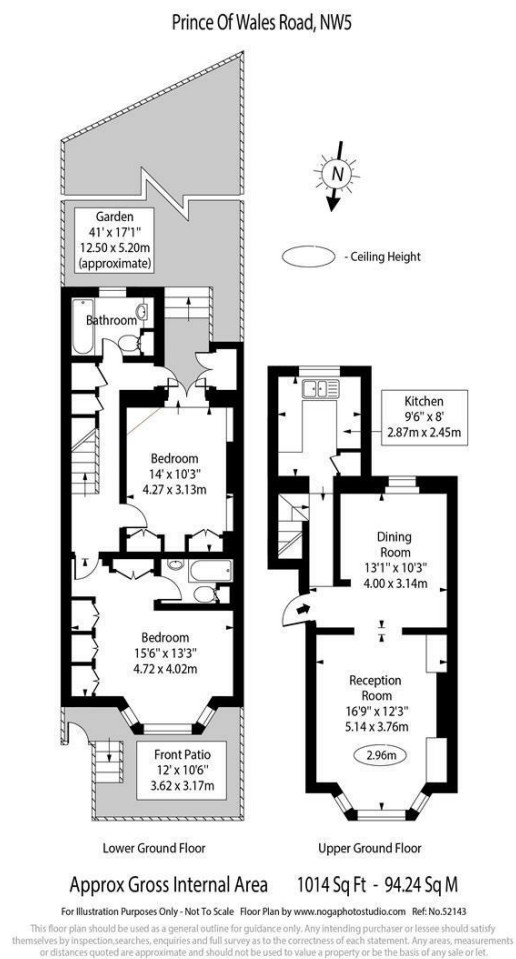
Kensal Rise  
54-56 Chamberlayne Rd  
NW10 3JH  
Tel 020 8960 4845  
[kensal@parkheath.com](mailto:kensal@parkheath.com)

South/West Hampstead  
192 West End Lane  
NW6 1SG  
Sales & Lettings  
Tel 020 7794 7111  
[192@parkheath.com](mailto:192@parkheath.com)

Property Management  
192 West End Lane  
NW6 1SG  
020 7433 6174  
[pm@parkheath.com](mailto:pm@parkheath.com)

[www.parkheath.com](http://www.parkheath.com)





The particulars do not constitute part of an offer or contract. The particulars, including text, photographs and plans, are for the guidance only of prospective purchasers/tenants and must not be relied upon as statements of fact. The descriptions provided therein represent the opinion of the author and whilst given in good faith should not be construed as statements of fact. Nothing in these particulars shall be deemed a statement that the property is in good condition or otherwise or that any services or facilities are in good working order. All measurements are approximate