

Parkheath

Sold on Service

Lambolle Road NW3

£3,300 PCM (£762 per week) - Camden Band F

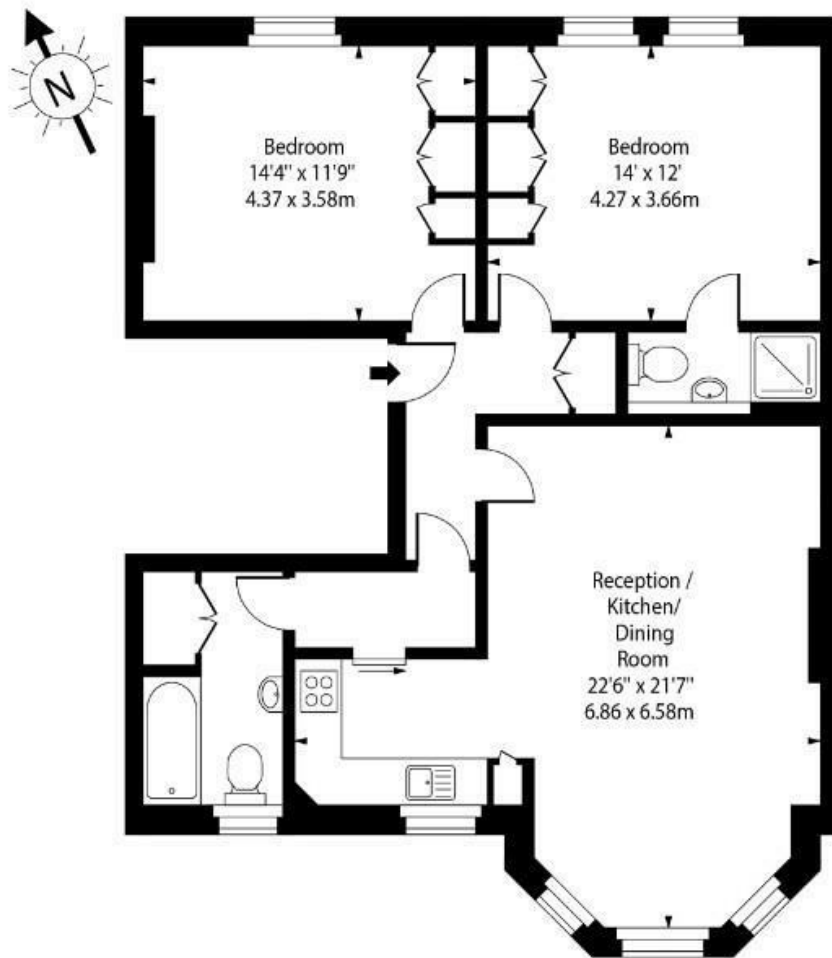


Spacious 2 double bedroom apartment
High ceilings and period features
Modern kitchen
Family bathroom
Close to Swiss Cottage and Belsize Park tubes

Entire 1st floor in period conversion
Wood floor reception with feature fireplace
Master bedroom with en suite
Premier tree-lined road
EPC Rating C, Council Tax: Camden band F

Belsize Park Office 020 7431 3104

Lambolle Road,
Belsize Park, NW3



First Floor

Approx Gross Internal Area 870 Sq Ft - 80.82 Sq M

For Illustration Purposes Only - Not To Scale Floor Plan by www.nogaphotostudio.com Ref: No.52258

This floor plan should be used as a general outline for guidance only. Any intending purchaser or lessee should satisfy themselves by inspection, searches, enquiries and full survey as to the correctness of each statement. Any areas, measurements or distances quoted are approximate and should not be used to value a property or be the basis of any sale or let.

The particulars do not constitute part of an offer or contract. The particulars, including text, photographs and plans, are for the guidance only of prospective purchasers/tenants and must not be relied upon as statements of fact. The descriptions provided therein represent the opinion of the author and whilst given in good faith should not be construed as statements of fact. Nothing in these particulars shall be deemed a statement that the property is in good condition or otherwise or that any services or facilities are in good working order. All measurements are approximate