

# Parkheath

*Sold on Service*

---

**Belsize Avenue NW3**

**£3,350 PCM (£773 per week) - Camden Band E**



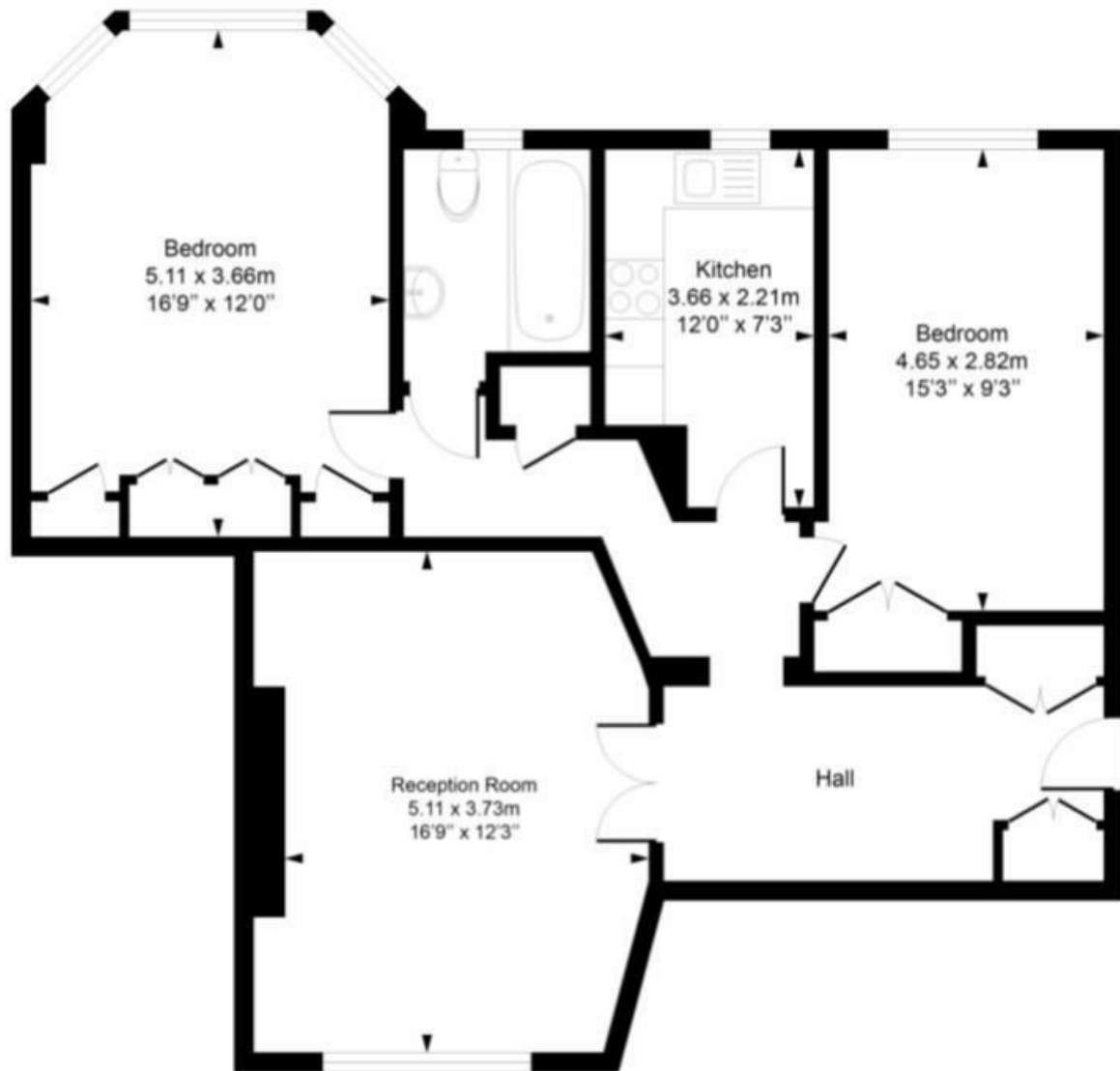
Recently refurbished 2 double bedroom  
Bright and very spacious apartment  
Fitted wardrobes to both double bedrooms  
Fully tiled bathroom  
Located Moments from Belsize Park tube

Communal gardens, lift and portorage  
Large reception  
Contemporary kitchen with all appliances  
Communal heating (seasonal ) and hot water  
EPC: Rating D, Council Tax: Camden band E

Belsize Park Office 020 7431 3104

## Hillfield Court

Approximate Gross Internal Area = 84.26 Sq m / 907 sq ft



### Fourth Floor

Measured in accordance with RICS guidelines. Every attempt is made to ensure accuracy  
However all measurements are approximate.  
The floor plan is illustrative purposes only and is not to scale  
ELLIE CLAIRE PHOTOGRAPHY LTD  
[www.ellieclairephotography.com](http://www.ellieclairephotography.com)

The particulars do not constitute part of an offer or contract. The particulars, including text, photographs and plans, are for the guidance only of prospective purchasers/tenants and must not be relied upon as statements of fact. The descriptions provided therein represent the opinion of the author and whilst given in good faith should not be construed as statements of fact. Nothing in these particulars shall be deemed a statement that the property is in good condition or otherwise or that any services or facilities are in good working order. All measurements are approximate