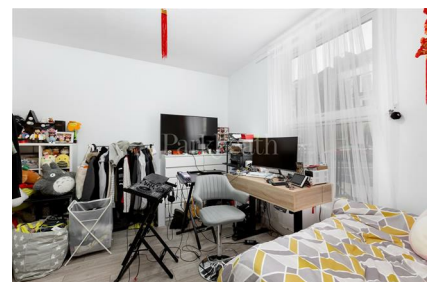


Parkheath

Sold on Service

Torriano Avenue NW5
£2,000 PCM (£462 per week) - Camden Band D



Well presented 2 bedroom apartment
Semi-open plan kitchen/reception
Contemporary bathroom suite
Close proximity to local amenities

Ground floor of a converted house
2 double bedrooms
Close to Kentish Town tube and overground
EPC: Rating D, Council Tax: Camden band D

Belsize Park Office 020 7431 3104

Torriano Avenue

Approximate Gross Internal Area = 58.7 Sq m / 632 sq ft



Ground Floor

Measured in accordance with RICS guidelines. Every attempt is made to ensure accuracy

However all measurements are approximate.

The floor plan is illustrative purposes only and is not to scale

ELLIE CLAIRE PHOTOGRAPHY LTD

www.ellieclairephotography.com

The particulars do not constitute part of an offer or contract. The particulars, including text, photographs and plans, are for the guidance only of prospective purchasers/tenants and must not be relied upon as statements of fact. The descriptions provided therein represent the opinion of the author and whilst given in good faith should not be construed as statements of fact. Nothing in these particulars shall be deemed a statement that the property is in good condition or otherwise or that any services or facilities are in good working order. All measurements are approximate