

Parkheath

Sold on Service

Adamson Road NW3

£2,500 PCM (£508 per week) - Camden Band E



Delightful 2 double bedroom apartment

High ceilings and large windows

Modern open plan kitchen

Family bathroom

Close to Belsize Parks amenities

Raised ground floor of Victorian house

Wood floor reception

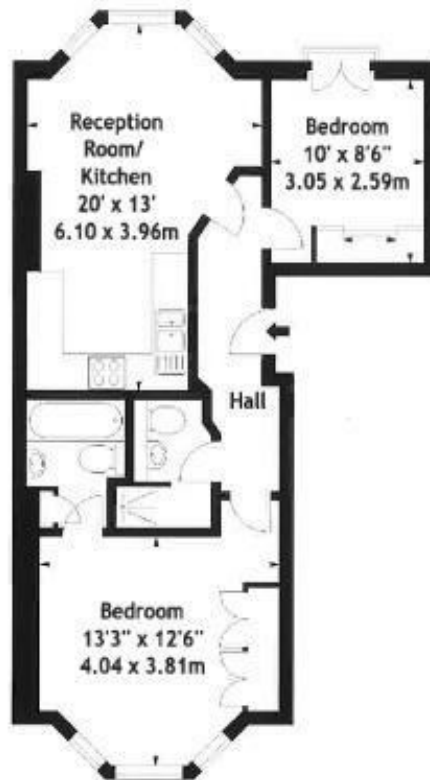
Main bedroom with en suite

Moments to Swiss Cottage tube

EPC Rating D, Council Tax: Camden band E

Belsize Park Office 020 7431 3104

Adamson Road, NW3
Approx. Gross Internal Area
593 Sq Ft - 55.09 Sq M



Raised Ground Floor

Measured in accordance with RICS guidelines. Every attempt is made to ensure accuracy, however all measurements are approximate. This floor plan is for illustrative purposes only and is not to scale.
© Datagraphy Ltd 2015
Photographs * Floorplans * Virtual Tours
Tel: 0845 643 4401 www.datagraphy.com

The particulars do not constitute part of an offer or contract. The particulars, including text, photographs and plans, are for the guidance only of prospective purchasers/tenants and must not be relied upon as statements of fact. The descriptions provided therein represent the opinion of the author and whilst given in good faith should not be construed as statements of fact. Nothing in these particulars shall be deemed a statement that the property is in good condition or otherwise or that any services or facilities are in good working order. All measurements are approximate.

The particulars do not constitute part of an offer or contract. The particulars, including text, photographs and plans, are for the guidance only of prospective purchasers/tenants and must not be relied upon as statements of fact. The descriptions provided therein represent the opinion of the author and whilst given in good faith should not be construed as statements of fact. Nothing in these particulars shall be deemed a statement that the property is in good condition or otherwise or that any services or facilities are in good working order. All measurements are approximate.