

Parkheath

Sold on Service

Eton Avenue NW3

£2,200 PCM (£508 per week) - Camden Band E



Newly renovated 1 bedroom apartment

Reception with wood floors and high ceiling

Double bedroom with fitted wardrobe

One of the areas finest roads

Close to Belsize Park and Primrose Hills amenities

Raised ground floor in period conversion

Separate kitchen/diner with all appliances

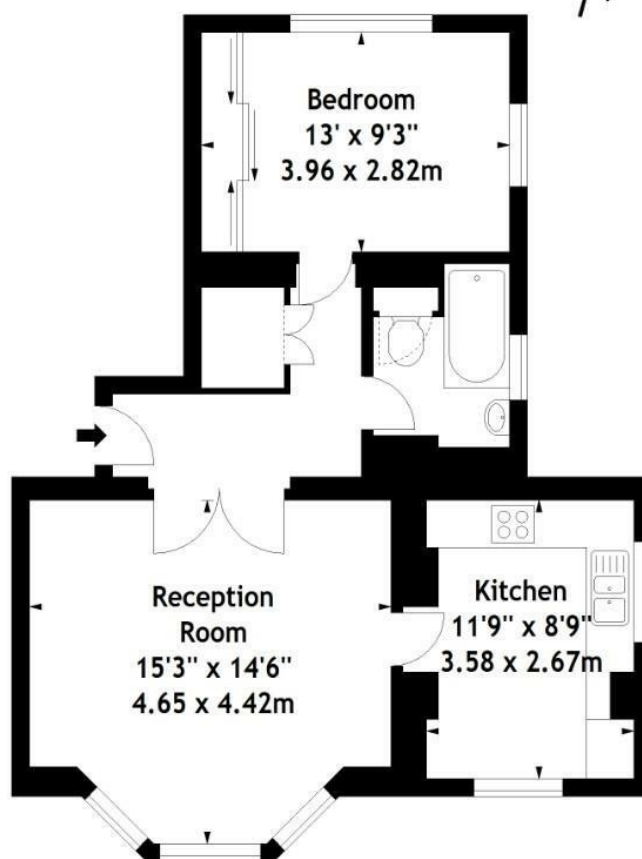
Brand new 3 piece bathroom

Moments to Swiss Cottage tube

EPC Rating D, Council Tax: Camden band E

Belsize Park Office 020 7431 3104

Eton Avenue, NW3
Approx. Gross Internal Area
591 Sq Ft - 54.90 Sq M



Ground Floor

Measured in accordance with RICS guidelines. Every attempt is made to ensure accuracy, however all measurements are approximate. This floor plan is for illustrative purposes only and is not to scale.
© Datagraphy Ltd 2016
Photographs * Floorplans * Virtual Tours
Tel: 0845 643 4401 www.datagraphy.com

The particulars do not constitute part of an offer or contract. The particulars, including text, photographs and plans, are for the guidance only of prospective purchasers/tenants and must not be relied upon as statements of fact. The descriptions provided therein represent the opinion of the author and whilst given in good faith should not be construed as statements of fact. Nothing in these particulars shall be deemed a statement that the property is in good condition or otherwise or that any services or facilities are in good working order. All measurements are approximate