



Belsize Park Gardens NW3

Parkheath
Sold on Service





Belsize Park Gardens, NW3

Asking Price £1,695,000

Leasehold

- A fabulous, immaculately presented apartment, extremely bright and spacious throughout
- Set in pristine semi-detached corner period conversion
- 3 double bedrooms and 2 bathrooms
- Over 1400 sq ft on the entire second floor
- Stunning 25ft reception with herringbone wood flooring and feature fireplace
- Luxury 13ft semi open plan kitchen
- Indulgent 21ft main bedroom with full range of built-in wardrobes
- 2 further bedrooms with built-in wardrobes plus a beautiful bathroom and shower room
- 999 years from 1976
- Wonderfully positioned for Belsize Park, Belsize Village, Primrose Hill and Swiss Cottage



Parkheath
Sold on Service

Camden Tax band G

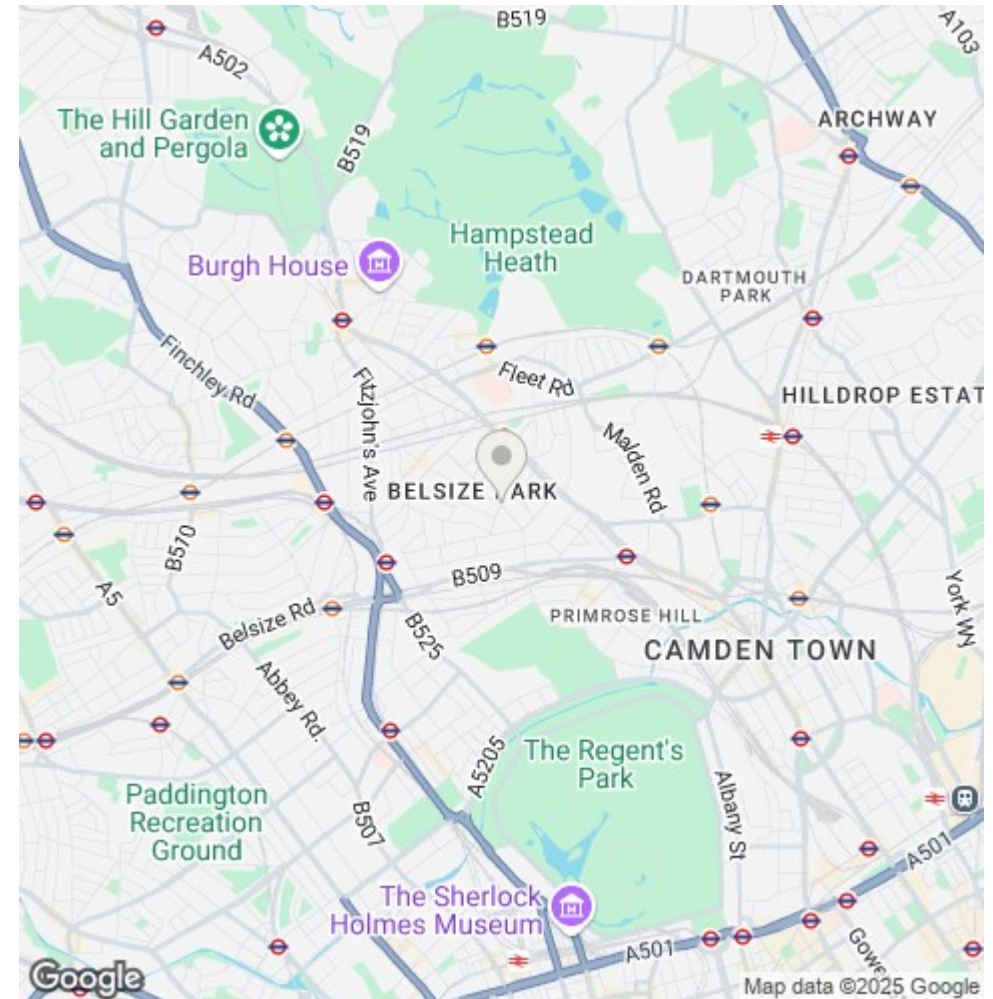
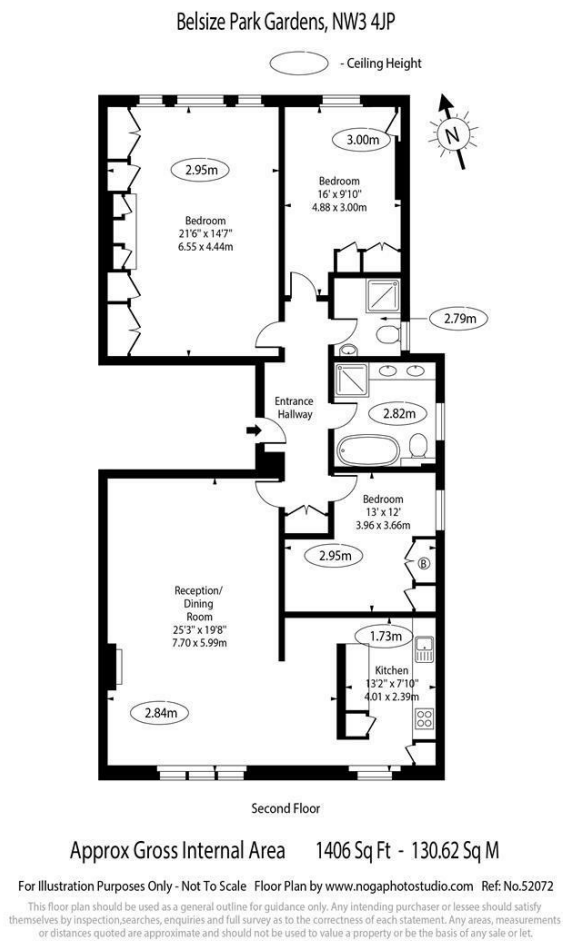
Belsize Park/Hampstead
208 Haverstock Hill
NW3 2AG
Sales 020 7431 1234
Lettings 020 7431 3104
nw3@parkheath.com

Kensal Rise
54-56 Chamberlayne Rd
NW10 3JH
Tel 020 8960 4845
kensal@parkheath.com

South/West Hampstead
192 West End Lane
NW6 1SG
Sales & Lettings
Tel 020 7794 7111
192@parkheath.com

Property Management
192 West End Lane
NW6 1SG
020 7433 6174
pm@parkheath.com

www.parkheath.com



The particulars do not constitute part of an offer or contract. The particulars, including text, photographs and plans, are for the guidance only of prospective purchasers/tenants and must not be relied upon as statements of fact. The descriptions provided therein represent the opinion of the author and whilst given in good faith should not be construed as statements of fact. Nothing in these particulars shall be deemed a statement that the property is in good condition or otherwise or that any services or facilities are in good working order. All measurements are approximate