

Parkheath

Sold on Service

Agincourt Road NW3

£2,225 PCM (£513 per week) - Camden Band C



Stylish and contemporary one bedroom apartment

Neutral decor with wood floors

Modern open plan kitchen with breakfast bar

Sleek shower room

Walking distance to Belsize Park tube and Hampstead Heath main line station

Top floor in period conversion

Bright reception room with feature fireplace

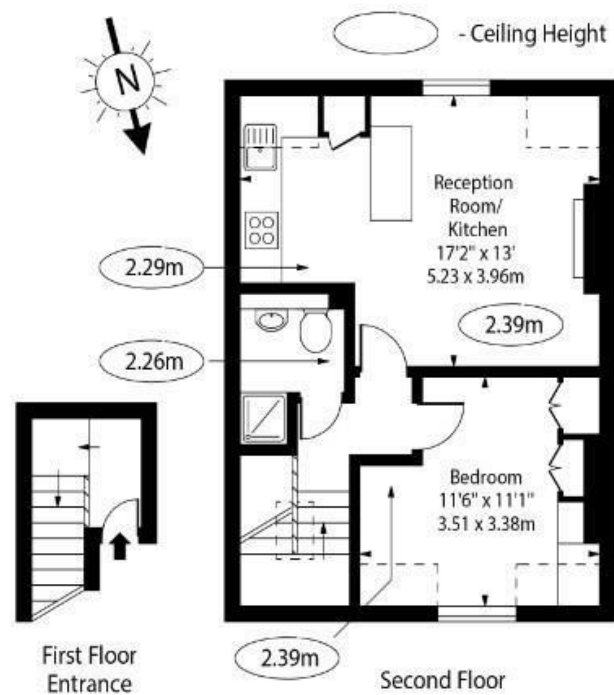
Double bedroom with built-in wardrobe

Close to Hampstead Heath and South End Green

EPC: Rating C, Council Tax: Camden band C

Belsize Park Office 020 7431 3104

Agincourt Road, NW3



Approx Gross Internal Area 425 Sq Ft - 39.48 Sq M

Approx Floor Area Including Restricted Heights 460 Sq Ft - 42.74 Sq M

For Illustration Purposes Only - Not To Scale Floor Plan by www.nogaphotostudio.com Ref: No.50516

This floor plan should be used as a general outline for guidance only. Any intending purchaser or lessee should satisfy themselves by inspection, searches, enquiries and full survey as to the correctness of each statement. Any areas, measurements or distances quoted are approximate and should not be used to value a property or be the basis of any sale or let.

The particulars do not constitute part of an offer or contract. The particulars, including text, photographs and plans, are for the guidance only of prospective purchasers/tenants and must not be relied upon as statements of fact. The descriptions provided therein represent the opinion of the author and whilst given in good faith should not be construed as statements of fact. Nothing in these particulars shall be deemed a statement that the property is in good condition or otherwise or that any services or facilities are in good working order. All measurements are approximate