



Lambolle Road NW3

Parkheath  
*Sold on Service*









**Parkheath**  
*Sold on Service*

**Camden Tax band E**

## **Lambolle Road, NW3**

### **Asking Price £650,000**

### **Leasehold - Share of Freehold**

- A very attractive and beautifully presented 2 bedroom, 2 bathroom apartment
- A rear south facing 8ft balcony overlooking beautiful communal gardens
- A lock up garage behind electronic gates
- Gorgeous 14ft open plan reception with wood block flooring and concertina doors
- 15ft main bedroom with en suite shower room plus small 2nd bedroom and shower room
- Set in sought after purpose built block
- 3rd floor (top) 573 sq ft approx
- Share in freehold company plus 999 year lease from September 1976
- Gorgeous views
- Perfectly situated for Belsize Park, Belsize Village, Primrose Hill and Swiss Cottage

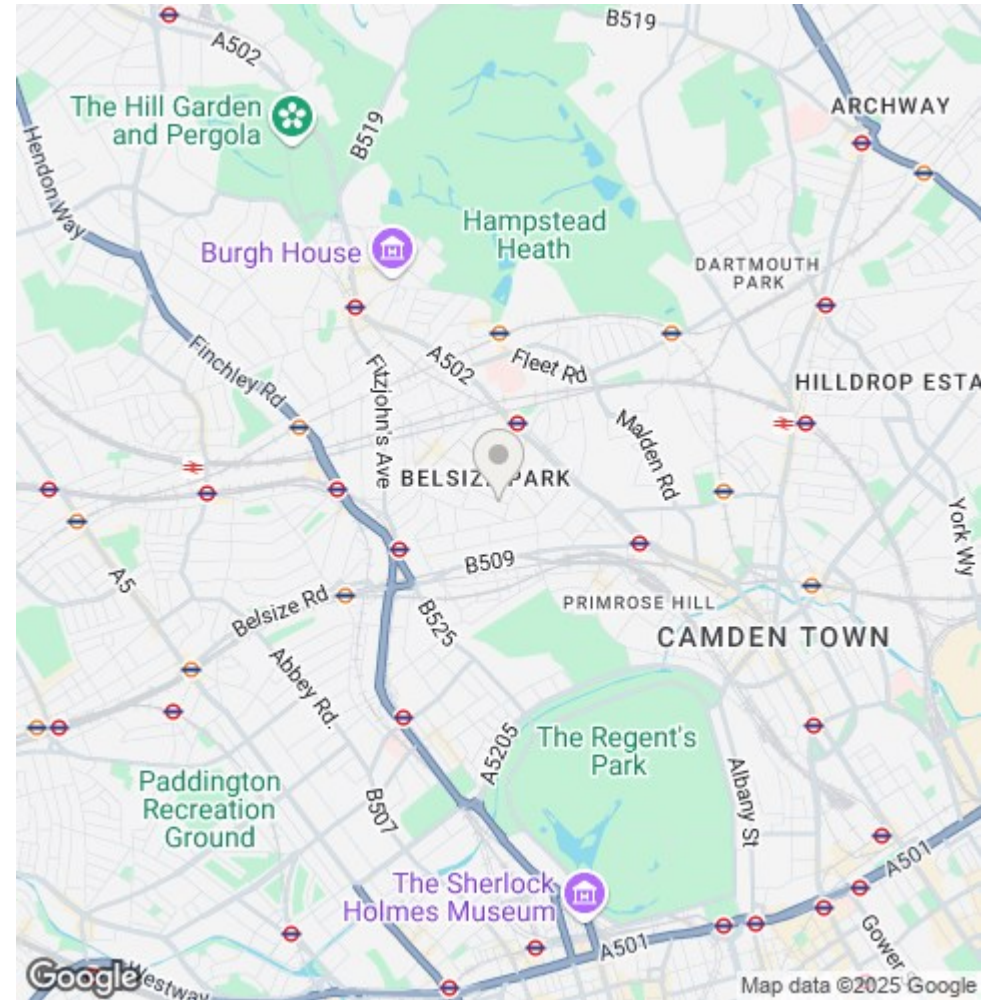
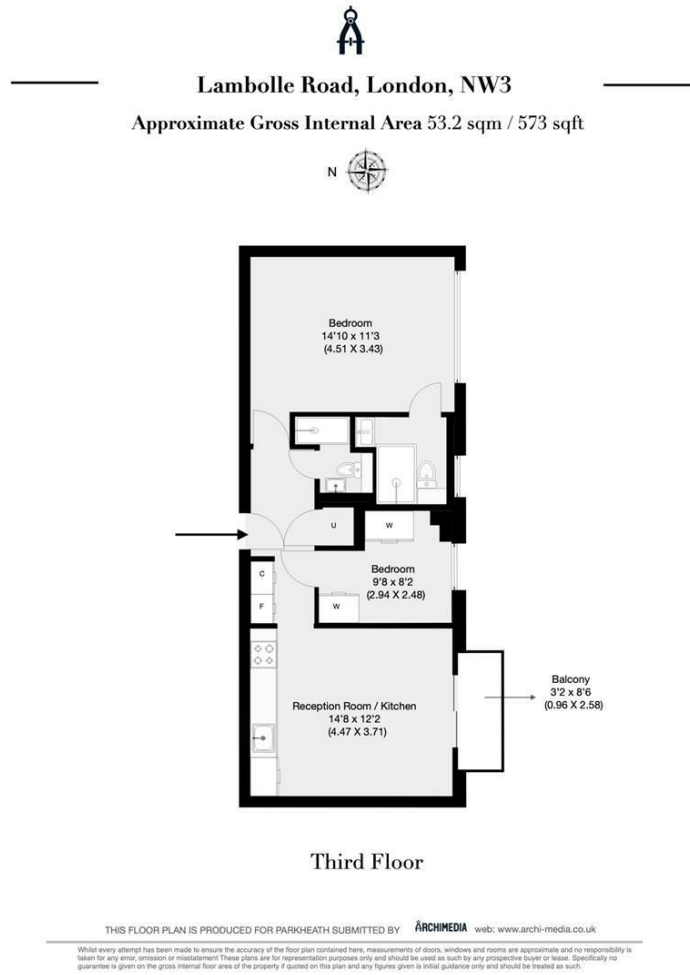
Belsize Park/Hampstead  
208 Haverstock Hill  
NW3 2AG  
Sales 020 7431 1234  
Lettings 020 7431 3104  
[nw3@parkheath.com](mailto:nw3@parkheath.com)

Kensal Rise  
54-56 Chamberlayne Rd  
NW10 3JH  
Tel 020 8960 4845  
[kensal@parkheath.com](mailto:kensal@parkheath.com)

South/West Hampstead  
192 West End Lane  
NW6 1SG  
Sales & Lettings  
Tel 020 7794 7111  
[192@parkheath.com](mailto:192@parkheath.com)

Property Management  
192 West End Lane  
NW6 1SG  
020 7433 6174  
[pm@parkheath.com](mailto:pm@parkheath.com)

[www.parkheath.com](http://www.parkheath.com)



The particulars do not constitute part of an offer or contract. The particulars, including text, photographs and plans, are for the guidance only of prospective purchasers/tenants and must not be relied upon as statements of fact. The descriptions provided therein represent the opinion of the author and whilst given in good faith should not be construed as statements of fact. Nothing in these particulars shall be deemed a statement that the property is in good condition or otherwise or that any services or facilities are in good working order. All measurements are approximate