



Haverstock Hill NW3

Parkheath  
*Sold on Service*





# Haverstock Hill, NW3

## £1,100,000

### Share of Freehold

- An extremely spacious ground floor apartment
- Set in attractive well maintained purpose built block
- Secure underground parking space
- Private decked terrace leading onto communal patio and gardens
- 1325 sq ft approx of flexible accommodation in need of modernisation
- 24ft reception with doors opening to garden area
- 2 double bedrooms and 2 bathrooms plus 3rd bedroom/dining area
- Share of freehold
- Close to all Belsize Park amenities and Hampstead Heath and Primrose Hill
- Moments to Englands Lane's cafes and boutiques

Belsize Park/Hampstead  
208 Haverstock Hill  
NW3 2AG  
Sales 020 7431 1234  
Lettings 020 7431 3104  
[nw3@parkheath.com](mailto:nw3@parkheath.com)

South/West Hampstead  
192 West End Lane  
NW6 1SG  
Sales & Lettings  
Tel 020 7794 7111  
[192@parkheath.com](mailto:192@parkheath.com)

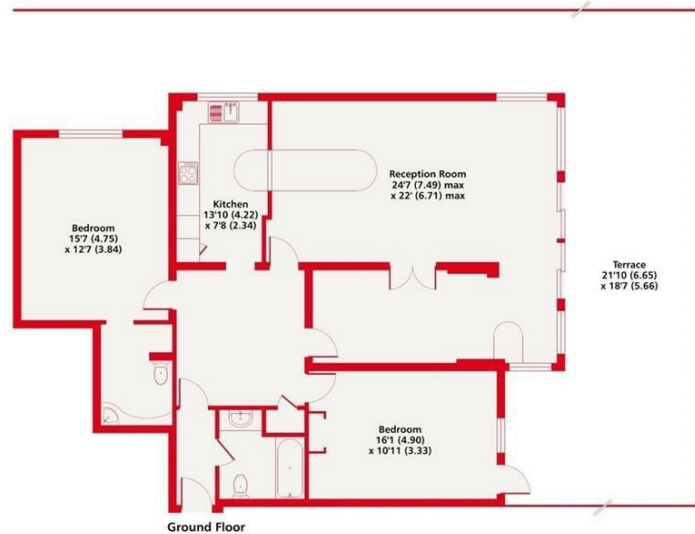
Kensal Rise  
54-56 Chamberlayne Rd  
NW10 3JH  
Tel 020 8960 4845  
[kensal@parkheath.com](mailto:kensal@parkheath.com)

Property Management  
192 West End Lane  
NW6 1SG  
020 7433 6174  
[pm@parkheath.com](mailto:pm@parkheath.com)

[www.parkheath.com](http://www.parkheath.com)

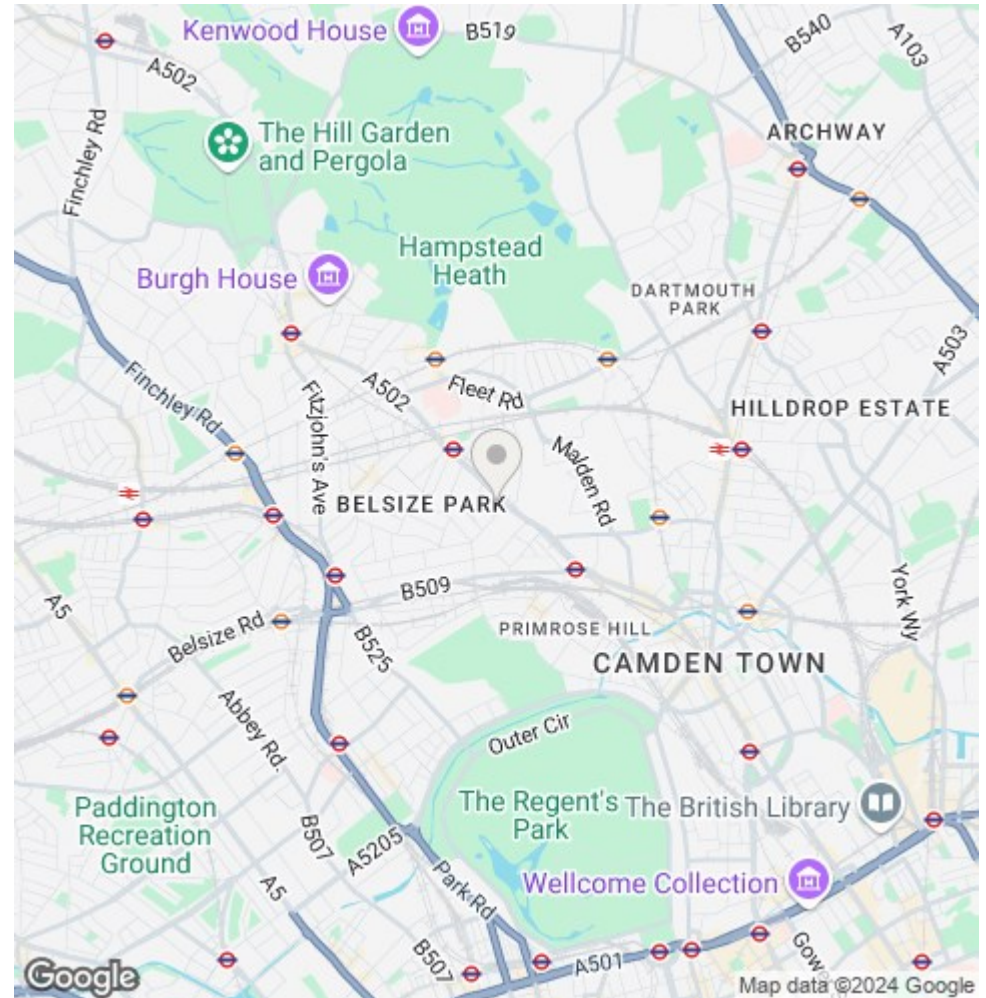
**Parkheath**  
*Sold on Service*

**Camden Tax band G**



Haverstock Hill, NW3  
Approximate Area = 1325 sq ft / 123 sq m  
For identification only - Not to scale

Floor plan produced in accordance with RICS Property Measurement 2nd Edition, incorporating International Property Measurement Standards (IPMS2 Residential). © nrichcom 2024. Produced for Kinleigh Folkard & Hayward. REF: 1220877



The particulars do not constitute part of an offer or contract. The particulars, including text, photographs and plans, are for the guidance only of prospective purchasers/tenants and must not be relied upon as statements of fact. The descriptions provided therein represent the opinion of the author and whilst given in good faith should not be construed as statements of fact. Nothing in these particulars shall be deemed a statement that the property is in good condition or otherwise or that any services or facilities are in good working order. All measurements are approximate