

Parkheath

Sold on Service

Antrim Mansions NW3 £2,850 PCM (£658 per week) - Camden Band F



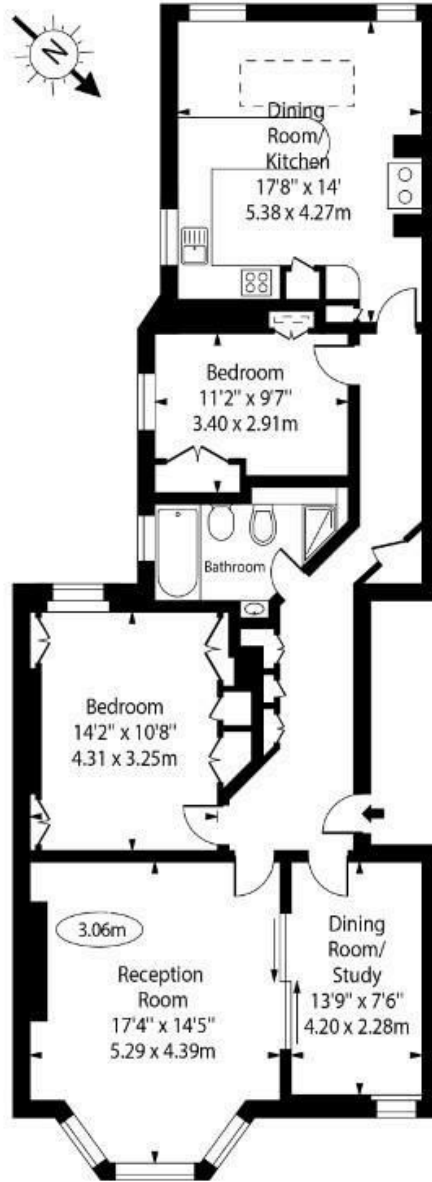
Spacious 2 double bedroom apartment
Popular mansion block
Generous size kitchen diner
Close to Belsize Park tube

Reception with adjoining dining room
Delightful communal gardens
Moment to England's Lanes cafe
EPC: Rating E, Council Tax: Camden band F

Belsize Park Office 020 7431 3104

Antrim Mansions
Antrim Road,
Belsize Park, NW3

○ - Ceiling Height



Second Floor

Approx Gross Internal Area 1105 Sq Ft - 102.65 Sq M

For Illustration Purposes Only - Not To Scale Floor Plan by www.nogaphotostudio.com Ref: No.50821

This floor plan should be used as a general outline for guidance only. Any intending purchaser or lessee should satisfy themselves by inspection, searches, enquiries and full survey as to the correctness of each statement. Any areas, measurements or distances quoted are approximate and should not be used to value a property or be the basis of any sale or let.

The particulars do not constitute part of an offer or contract. The particulars, including text, photographs and plans, are for the guidance only of prospective purchasers/tenants and must not be relied upon as statements of fact. The descriptions provided therein represent the opinion of the author and whilst given in good faith should not be construed as statements of fact. Nothing in these particulars shall be deemed a statement that the property is in good condition or otherwise or that any services or facilities are in good working order. All measurements are approximate