

Parkheath

Sold on Service

Crossfield Road NW3
£3,500 PCM (£807 per week) - Camden Band F



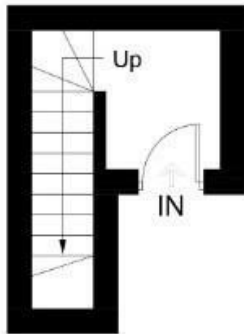
Spacious 3 double bedroom maisonette
Arranged over top two floors (2nd and 3rd)
Fully fitted kitchen
2 bathrooms
Good storage

Picturesque private balcony
Period conversion
Large reception with bay window
Adjacent to Swiss Cottage tube
EPC: Rating E, Council Tax: Camden band F


Belsize Park Office 020 7431 3104

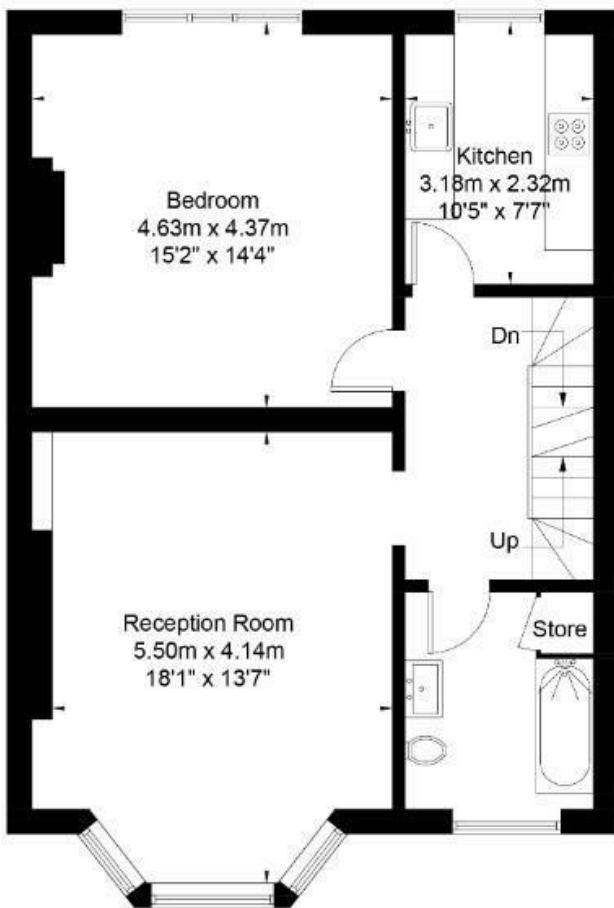
Crossfield Road

Approximate Gross Internal Area = 121.0 sq m / 1302 sq ft



First Floor

 = Reduced headroom below 1.5m / 5'0



Second Floor



Third Floor

Illustration for identification purposes only, measurements are approximate, not to scale. FloorplansUsketch.com © 2017 (ID353457)

The particulars do not constitute part of an offer or contract. The particulars, including text, photographs and plans, are for the guidance only of prospective purchasers/tenants and must not be relied upon as statements of fact. The descriptions provided therein represent the opinion of the author and whilst given in good faith should not be construed as statements of fact. Nothing in these particulars shall be deemed a statement that the property is in good condition or otherwise or that any services or facilities are in good working order. All measurements are approximate