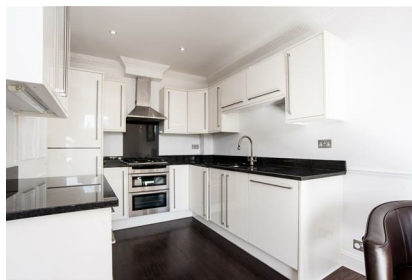


# Parkheath

*Sold on Service*

---

**Belsize Grove NW3**  
**£2,800 PCM (£646 per week) - Camden Band F**

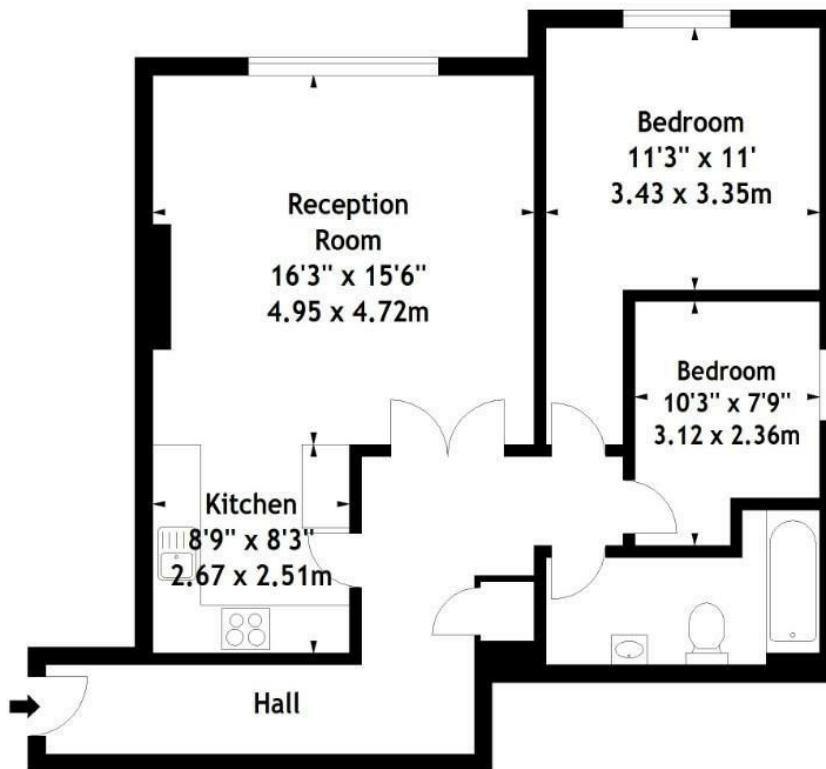


Stylish 2 double bedroom apartment  
Lift and delightful communal gardens  
semi-open plan kitchen with all appliances  
Close to Belsize Park tube  
Moments to the areas numerous amenities

3rd floor in prestigious stucco fronted building  
Large reception  
Contemporary bathroom  
Wood floors throughout  
EPC: Rating C, Council Tax: Camden band E

Belsize Park Office 020 7431 3104

Ormonde Court, NW3  
Approx. Gross Internal Area  
781 Sq Ft - 72.55 Sq M



### Third Floor

Measured in accordance with RICS guidelines. Every attempt is made to ensure accuracy, however all measurements are approximate. This floor plan is for illustrative purposes only and is not to scale.  
© Datagraphy Ltd 2015  
Photographs \* Floorplans \* Virtual Tours  
Tel: 0845 643 4401 [www.datagraphy.com](http://www.datagraphy.com)

The particulars do not constitute part of an offer or contract. The particulars, including text, photographs and plans, are for the guidance only of prospective purchasers/tenants and must not be relied upon as statements of fact. The descriptions provided therein represent the opinion of the author and whilst given in good faith should not be construed as statements of fact. Nothing in these particulars shall be deemed a statement that the property is in good condition or otherwise or that any services or facilities are in good working order. All measurements are approximate