



Eton College Road NW3

Parkheath
Sold on Service





Eton College Road, NW3 Asking Price £525,000 Leasehold

- A delightful 1 bedroom apartment
- Offered in excellent decorative order
- Lifts, portorage, communal garden and first come first served parking
- Approx 523 sq ft on the fifth floor of this popular purpose built block
- Great roof top views
- Spacious and bright 20ft reception
- 15ft double bedroom
- Separate 8ft kitchen
- 125 years from 1982
- Moments to Chalk Farm underground and within walking distance to Primrose Hill, Belszie Park and Camden

Belsize Park/Hampstead
208 Haverstock Hill
NW3 2AG
Sales 020 7431 1234
Lettings 020 7431 3104
nw3@parkheath.com

South/West Hampstead
192 West End Lane
NW6 1SG
Sales & Lettings
Tel 020 7794 7111
192@parkheath.com

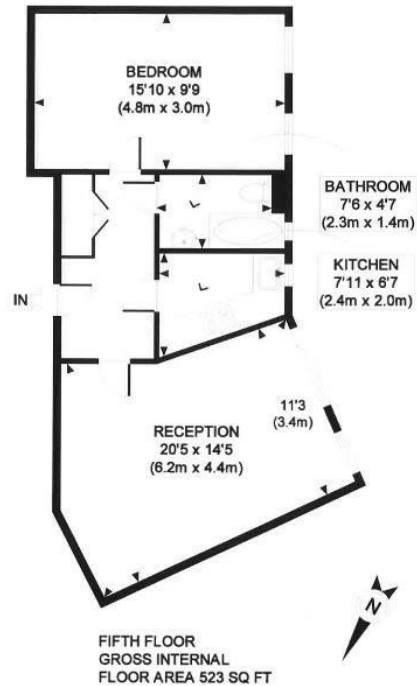
Kensal Rise
54-56 Chamberlayne Rd
NW10 3JH
Tel 020 8960 4845
kensal@parkheath.com

Property Management
192 West End Lane
NW6 1SG
020 7433 6174
pm@parkheath.com

www.parkheath.com

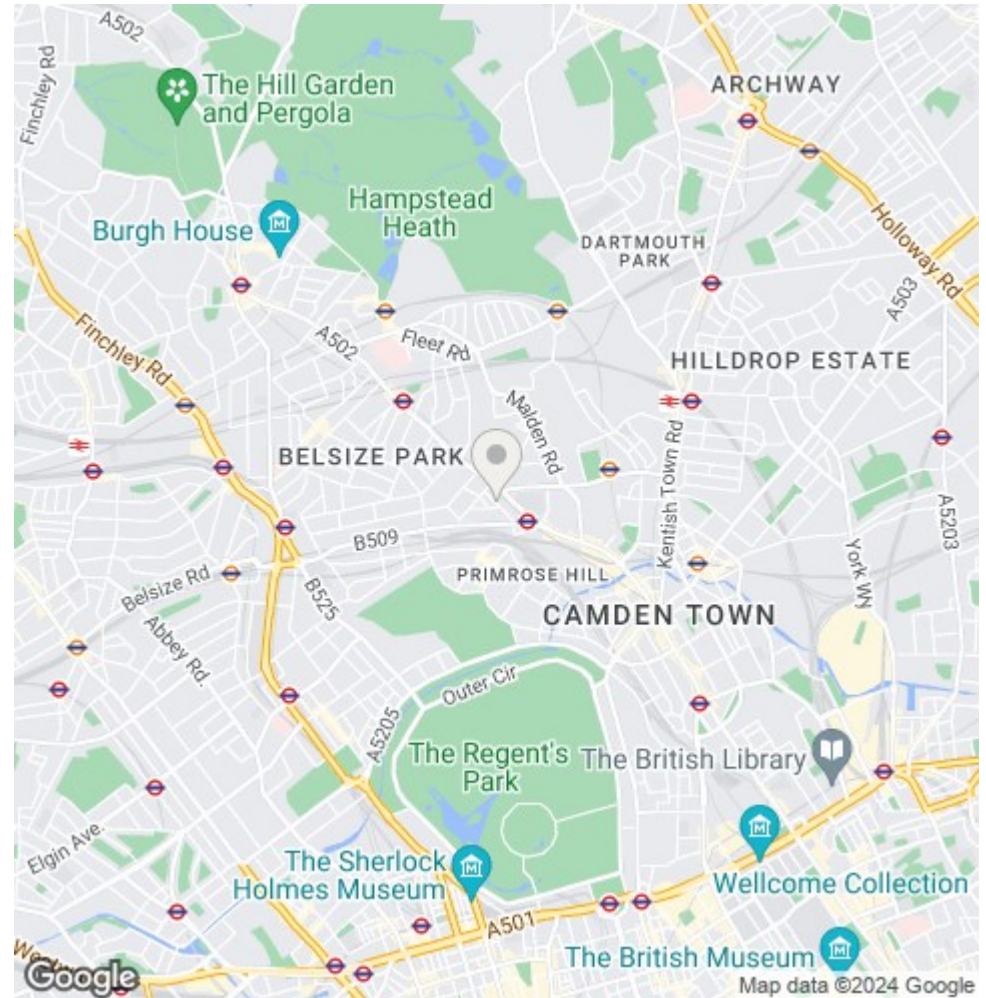
Parkheath
Sold on Service

Camden Tax band D



APPROX. GROSS INTERNAL FLOOR AREA 523 SQ FT / 49 SQ M
 Ref: GCBP - 271010 Copyright photoplan.co.uk
 Floorplans are for identification and guideline purposes only, not to scale.
 Compliant with RICS code of measuring practice.

The particulars do not constitute part of an offer or contract. The particulars, including text, photographs and plans, are for the guidance only of prospective purchasers/tenants and must not be relied upon as statements of fact. The descriptions provided therein represent the opinion of the author and whilst given in good faith should not be construed as statements of fact. Nothing in these particulars shall be deemed a statement that the property is in good condition or otherwise or that any services or facilities are in good working order. All measurements are approximate.



The particulars do not constitute part of an offer or contract. The particulars, including text, photographs and plans, are for the guidance only of prospective purchasers/tenants and must not be relied upon as statements of fact. The descriptions provided therein represent the opinion of the author and whilst given in good faith should not be construed as statements of fact. Nothing in these particulars shall be deemed a statement that the property is in good condition or otherwise or that any services or facilities are in good working order. All measurements are approximate.