

Parkheath

Sold on Service

Glenmore Road NW3
£5,500 PCM (£1269 per week) - Camden Band E



SHORT LET - Superb 2 double bedroom garden flat
Period features and contemporary styling
Bedroom 1 with dressing area and en suite
2nd double bedroom and shower room
Moments from Belsize Park tube

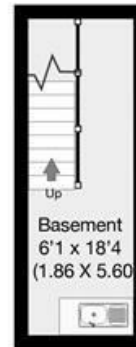
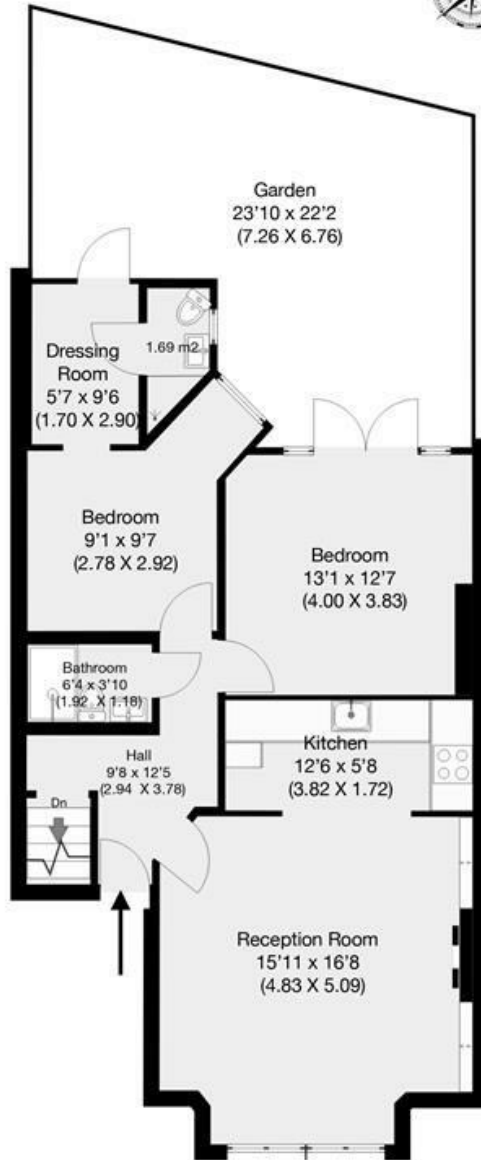
Private patio garden
Reception with fully equipped open plan kitchen
Ground floor in period conversion
Basement utility/storage room
EPC: Rating D, Council Tax: Camden band E

Belsize Park Office 020 7431 3104



Glenmore Road, London, NW3

Approximate Gross Internal Area 85.5 sqm / 921 sqft



Ground Floor
(75.1 sqm / 808 sqft)

Lower Ground Floor
(10.4 sqm / 112 sqft)

THIS FLOOR PLAN IS PRODUCED FOR PARKHEATH SUBMITTED BY **ARCHIMEDIA** web: www.archi-media.co.uk

Whilst every attempt has been made to ensure the accuracy of the floor plan contained here, measurements of doors, windows and rooms are approximate and no responsibility is taken for any error, omission or misstatement. These plans are for representation purposes only and should be used as such by any prospective buyer or lease. Specifically no guarantee is given on the gross internal floor area of the property if quoted on this plan and any figures given is initial guidance only and should be treated as such.

The particulars do not constitute part of an offer or contract. The particulars, including text, photographs and plans, are for the guidance only of prospective purchasers/tenants and must not be relied upon as statements of fact. The descriptions provided therein represent the opinion of the author and whilst given in good faith should not be construed as statements of fact. Nothing in these particulars shall be deemed a statement that the property is in good condition or otherwise or that any services or facilities are in good working order. All measurements are approximate