

# Parkheath

*Sold on Service*

**Howitt Road NW3**  
**£3,025 PCM (£698 per week) - Camden Band E**

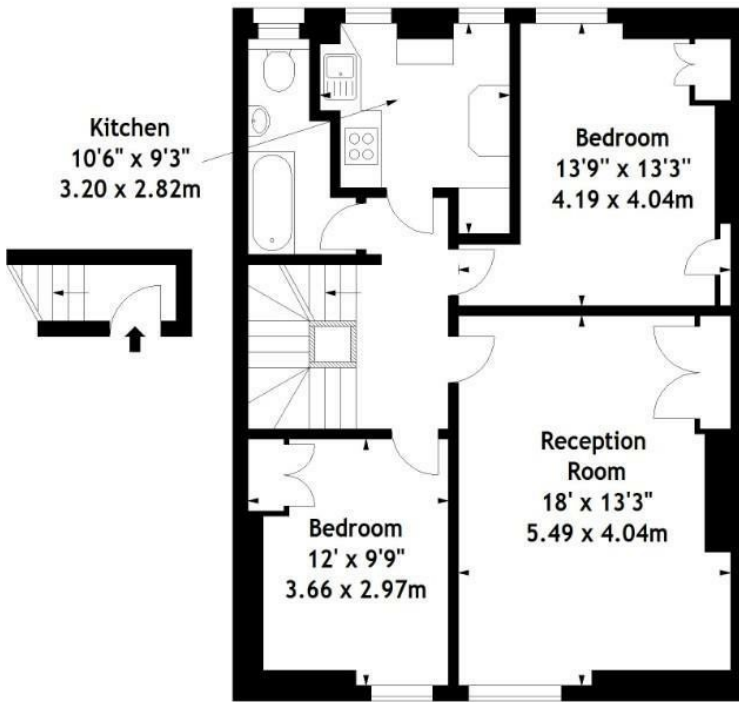


3 double bedroom maisonette  
Wood floor reception  
Master bedroom with en suite  
A stones throw to Belsize Park tube

Top 2 floors of a period conversion  
Fully equipped kitchen  
Family bathroom  
EPC: Rating E, Council Tax: Camden band E

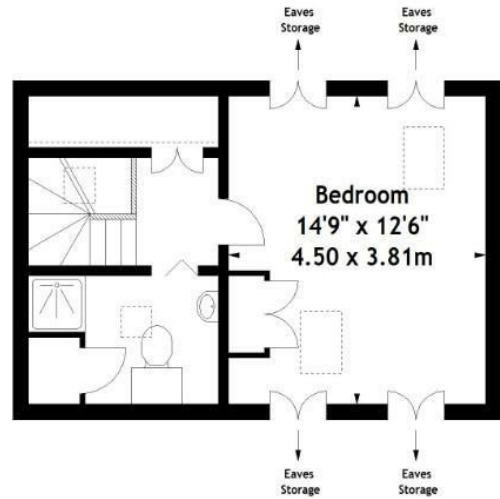
Belsize Park Office 020 7431 3104

Howitt Road, NW3  
Approx. Gross Internal Area  
1090 Sq Ft - 101.26 Sq M



First Floor  
Entrance

Second Floor



Third Floor

Measured in accordance with RICS guidelines. Every attempt is made to ensure accuracy, however all measurements are approximate. This floor plan is for illustrative purposes only and is not to scale.

© Datography Ltd 2017  
Photographs \* Floorplans \* Virtual Tours  
Tel: 0845 643 4401 [www.datography.com](http://www.datography.com)

The particulars do not constitute part of an offer or contract. The particulars, including text, photographs and plans, are for the guidance only of prospective purchasers/tenants and must not be relied upon as statements of fact. The descriptions provided therein represent the opinion of the author and whilst given in good faith should not be construed as statements of fact. Nothing in these particulars shall be deemed a statement that the property is in good condition or otherwise or that any services or facilities are in good working order. All measurements are approximate