

Parkheath

Sold on Service

Belsize Park Gardens NW3
£1,900 PCM (£438 per week) - Camden Band C

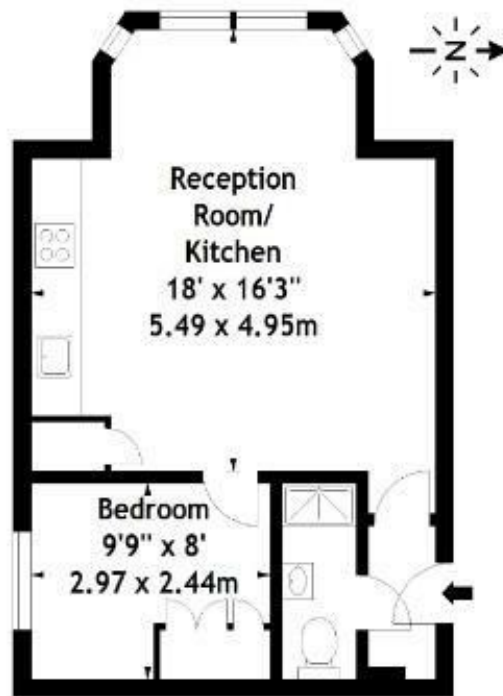


Fantastic raised ground floor apartment
Exceptionally high ceilings
Double bedroom with fitted wardrobes
Close to Belsize Park tube

Period house with communal garden
Full height windows
Reception with open plan modern kitchen
EPC: Rating F, Council Tax: Camden band C

Belsize Park Office 020 7431 3104

Belsize Park Gardens,
Belsize Park, NW3
Approx. Gross Internal Area
402 Sq Ft - 37.35 Sq M



Raised Ground Floor

Measured in accordance with RICS guidelines. Every attempt is made to ensure accuracy, however all measurements are approximate. This floor plan is for illustrative purposes only and is not to scale.
© Datography Ltd 2016
Photographs * Floorplans * Virtual Tours
Tel: 0845 643 4401 www.datography.com

The particulars do not constitute part of an offer or contract. The particulars, including text, photographs and plans, are for the guidance only of prospective purchasers/tenants and must not be relied upon as statements of fact. The descriptions provided therein represent the opinion of the author and whilst given in good faith should not be construed as statements of fact. Nothing in these particulars shall be deemed a statement that the property is in good condition or otherwise or that any services or facilities are in good working order. All measurements are approximate.

The particulars do not constitute part of an offer or contract. The particulars, including text, photographs and plans, are for the guidance only of prospective purchasers/tenants and must not be relied upon as statements of fact. The descriptions provided therein represent the opinion of the author and whilst given in good faith should not be construed as statements of fact. Nothing in these particulars shall be deemed a statement that the property is in good condition or otherwise or that any services or facilities are in good working order. All measurements are approximate