

# Parkheath

*Sold on Service*

**Steeles Road NW3**

**£1,800 PCM (£415 per week) - Camden Band D**

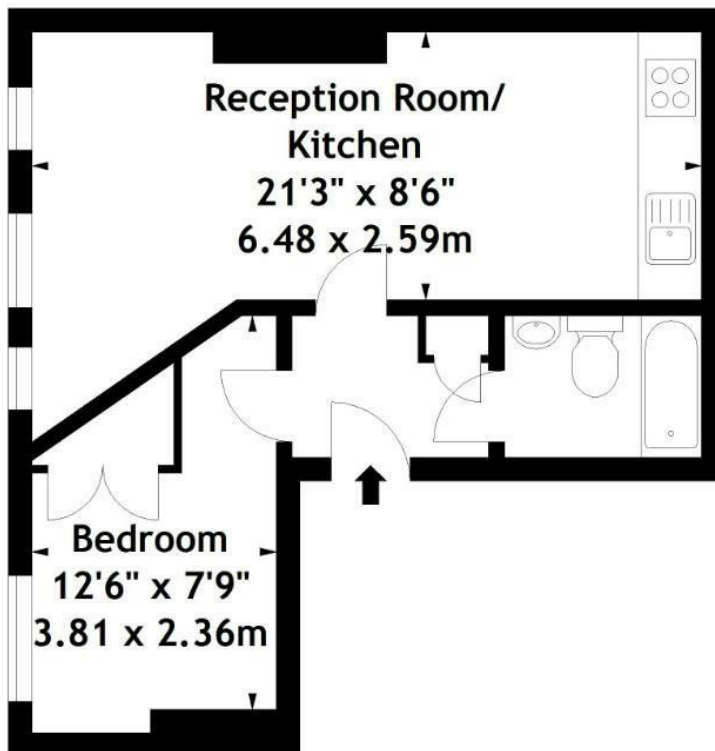
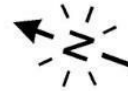


Modern 1 double bedroom apartment  
Bedroom with fitted wardrobes  
Limestone tiled bathroom  
Close to Belsize Park and Swiss Cottage tubes

Magnificent period house  
Bright reception  
Open plan kitchen with dishwasher  
EPC: Rating D, Council Tax: Camden band D

Belsize Park Office 020 7431 1234

Steeles Road, NW3  
Approx. Gross Internal Area  
355 Sq Ft - 32.98 Sq M



## Second Floor

Measured in accordance with RICS guidelines. Every attempt is made to ensure accuracy, however all measurements are approximate.

This floor plan is for illustrative purposes only and is not to scale.

© Datography Ltd 2014

Photographs \* Floorplans \* Virtual Tours  
Tel: 0845 643 4401 [www.datography.com](http://www.datography.com)

The particulars do not constitute part of an offer or contract. The particulars, including text, photographs and plans, are for the guidance only of prospective purchasers/tenants and must not be relied upon as statements of fact. The descriptions provided therein represent the opinion of the author and whilst given in good faith should not be construed as statements of fact. Nothing in these particulars shall be deemed a statement that the property is in good condition or otherwise or that any services or facilities are in good working order. All measurements are approximate