

# Parkheath

*Sold on Service*

---

**Kentish Town Road NW1**

**£3,250 PCM (£750 per week) - Camden Band D**



3 double bedroom triplex apartment

Ideal for sharers

Kitchen diner with all appliances

Easy access to local amenities

Close to overground and Thames link

Wood floors and neutral décor

Large reception

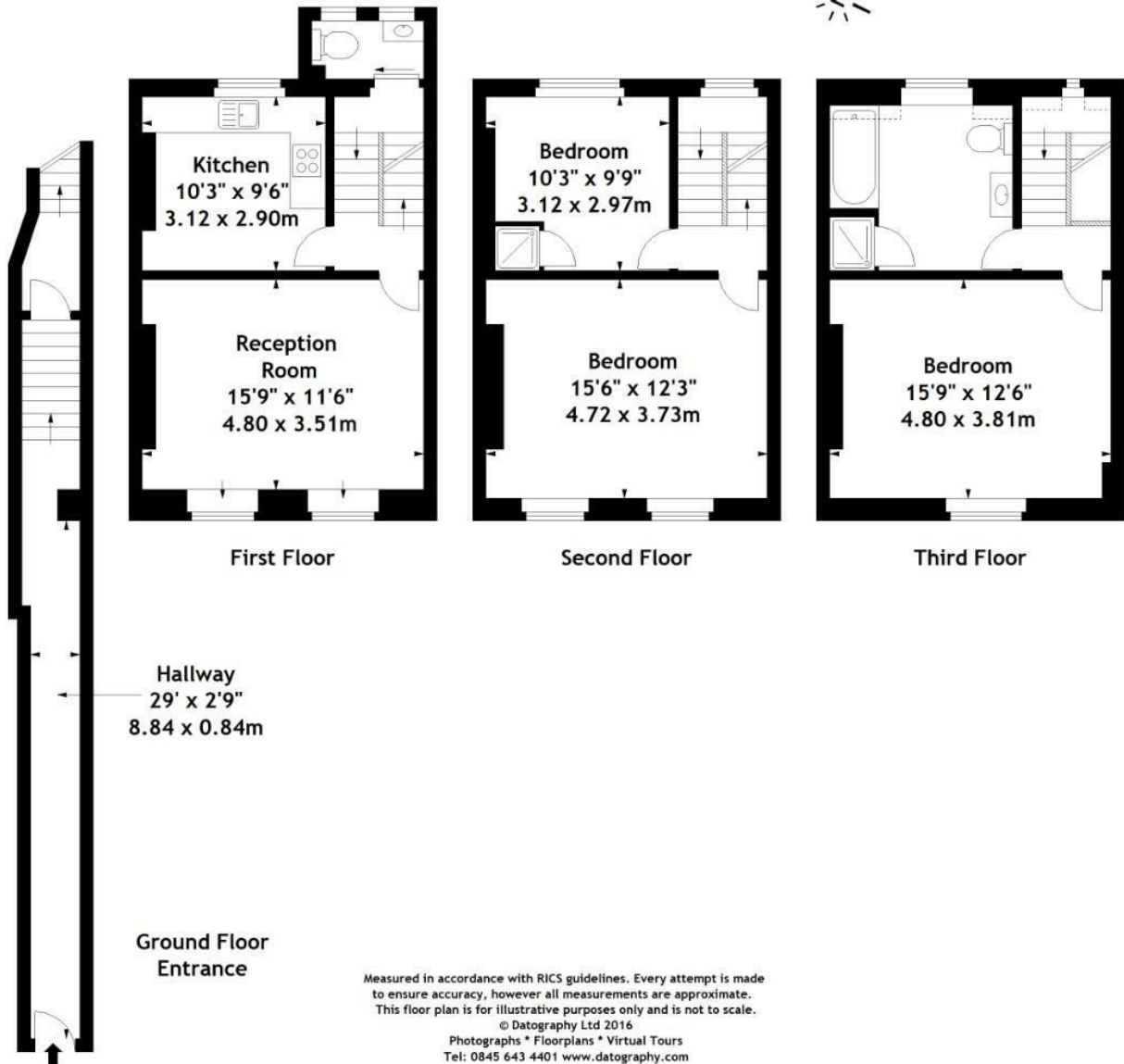
Full Bathroom and guest wc

Moments to Northern line

Neutral décor and wood floors

Belsize Park Office 020 7431 3104

Kentish Town Road, NW1  
Approx. Gross Internal Area  
1218 Sq Ft - 113.15 Sq M



The particulars do not constitute part of an offer or contract. The particulars, including text, photographs and plans, are for the guidance only of prospective purchasers/tenants and must not be relied upon as statements of fact. The descriptions provided therein represent the opinion of the author and whilst given in good faith should not be construed as statements of fact. Nothing in these particulars shall be deemed a statement that the property is in good condition or otherwise or that any services or facilities are in good working order. All measurements are approximate