

Parkheath

Sold on Service

Nassington Road NW3
£2,750 PCM (£635 per week) - Camden Band E

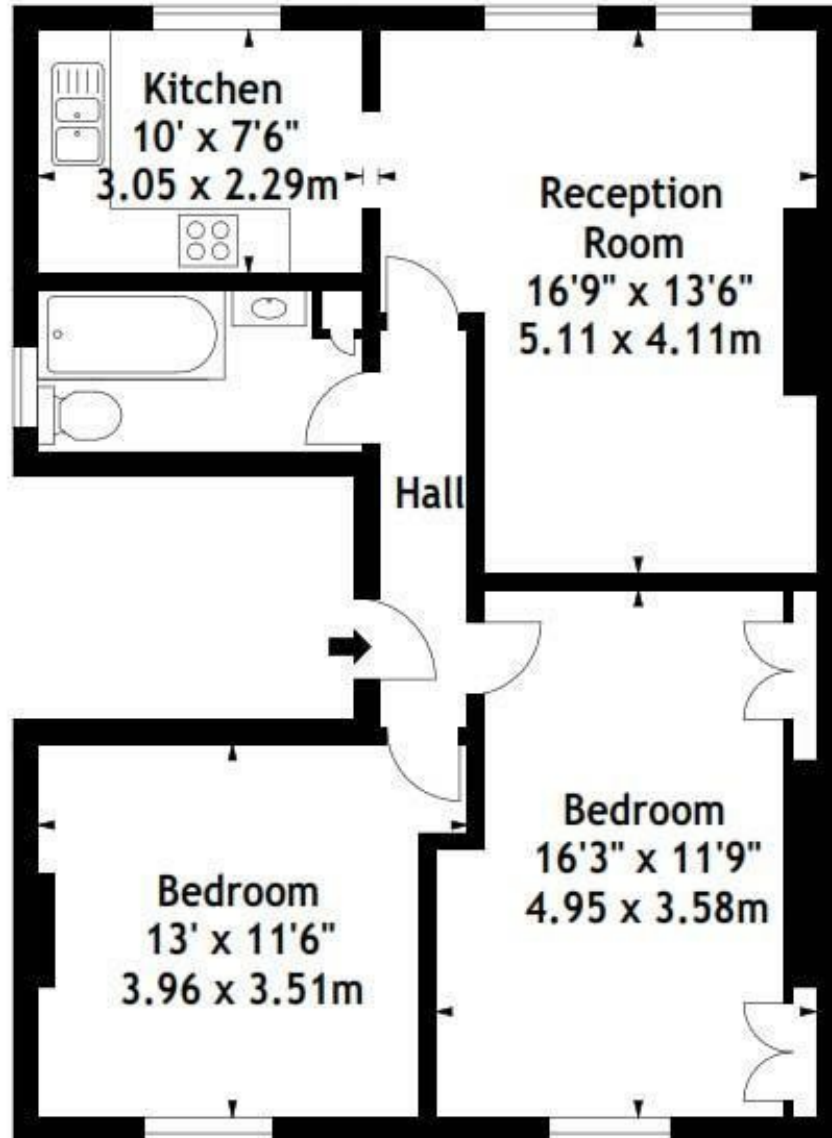


Delightful 2 double bedroom apartment
Very bright with high ceilings
2 large double bedrooms
3 piece bathroom
Close to Hampstead Heath station

1st floor in period house
Good size reception
Kitchen with all appliances
Road adjoins Hampstead Heath
EPC: Rating D, Council Tax: Camden band E

Belsize Park Office 020 7431 3104

Nassington Road, NW3
Approx. Gross Internal Area
710 Sq Ft - 65.96 Sq M



First Floor

Measured in accordance with RICS guidelines. Every attempt is made to ensure accuracy, however all measurements are approximate. This floor plan is for illustrative purposes only and is not to scale.

© Datography Ltd 2015

Photographs * Floorplans * Virtual Tours
Tel: 0845 643 4401 www.datography.com

The particulars do not constitute part of an offer or contract. The particulars, including text, photographs and plans, are for the guidance only of prospective purchasers/tenants and must not be relied upon as statements of fact. The descriptions provided therein represent the opinion of the author and whilst given in good faith should not be construed as statements of fact. Nothing in these particulars shall be deemed a statement that the property is in good condition or otherwise or that any services or facilities are in good working order. All measurements are approximate