



Adelaide Road NW3

Parkheath
Sold on Service





Adelaide Road, NW3 Asking Price £490,000 Leasehold

- An excellent 1 bedroom apartment
- Set in this small purpose built block
- The rarity of an off street parking space
- Top floor (2nd) 432 sq ft approx
- A spacious, bright 14ft reception
- 7ft semi open plan kitchen
- 11ft bedroom
- 189 years from 1984
- Ideally situated for Primrose Hill
- Close to Belsize Park, Swiss Cottage and Chalk Farm



Parkheath
Sold on Service

Camden Tax band D

Belsize Park/Hampstead
208 Haverstock Hill
NW3 2AG
Sales 020 7431 1234
Lettings 020 7431 3104
nw3@parkheath.com

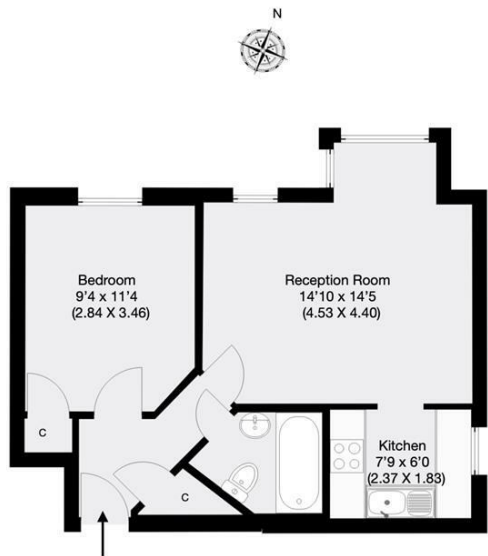
South/West Hampstead
192 West End Lane
NW6 1SG
Sales & Lettings
Tel 020 7794 7111
192@parkheath.com

Kensal Rise
54-56 Chamberlayne Rd
NW10 3JH
Tel 020 8960 4845
kensal@parkheath.com

Property Management
192 West End Lane
NW6 1SG
020 7433 6174
pm@parkheath.com

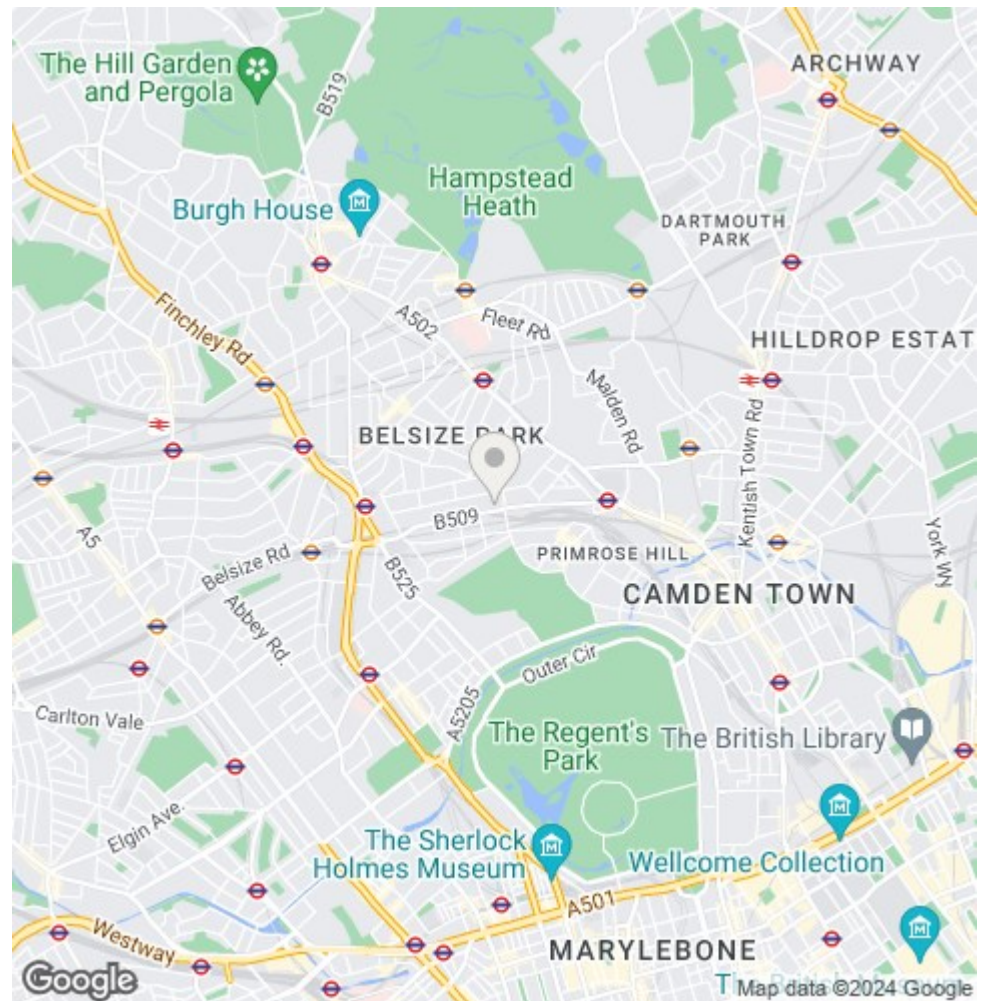
www.parkheath.com


100 Adelaide Road, London, NW3
Approximate Gross Internal Area 40.1 sqm / 432 sqft



Second Floor

THIS FLOOR PLAN IS PRODUCED FOR PARKHEATH SUBMITTED BY **ARCHIMEDIA** web: www.archi-media.co.uk
Whilst every attempt has been made to ensure the accuracy of the floor plan contained herein, measurements of doors, windows and rooms are approximate and no responsibility is taken for any error, omission or misstatement. These plans are for representation purposes only and should be used as such for any prospective buyer or lease. Specifically no guarantee is given on the gross internal floor area of the property if quoted on this plan and any figures given in initial guidance only and should be treated as such.



The particulars do not constitute part of an offer or contract. The particulars, including text, photographs and plans, are for the guidance only of prospective purchasers/tenants and must not be relied upon as statements of fact. The descriptions provided therein represent the opinion of the author and whilst given in good faith should not be construed as statements of fact. Nothing in these particulars shall be deemed a statement that the property is in good condition or otherwise or that any services or facilities are in good working order. All measurements are approximate