

# Parkheath

*Sold on Service*

---

**Lyndhurst Gardens NW3**  
**£2,850 PCM (£658 per week) - Camden Band F**



Beautiful 2 double bedroom apartment  
Reception with feature fireplace  
Luxurious shower room  
Close to Belsize Park and Swiss Cottage tubes

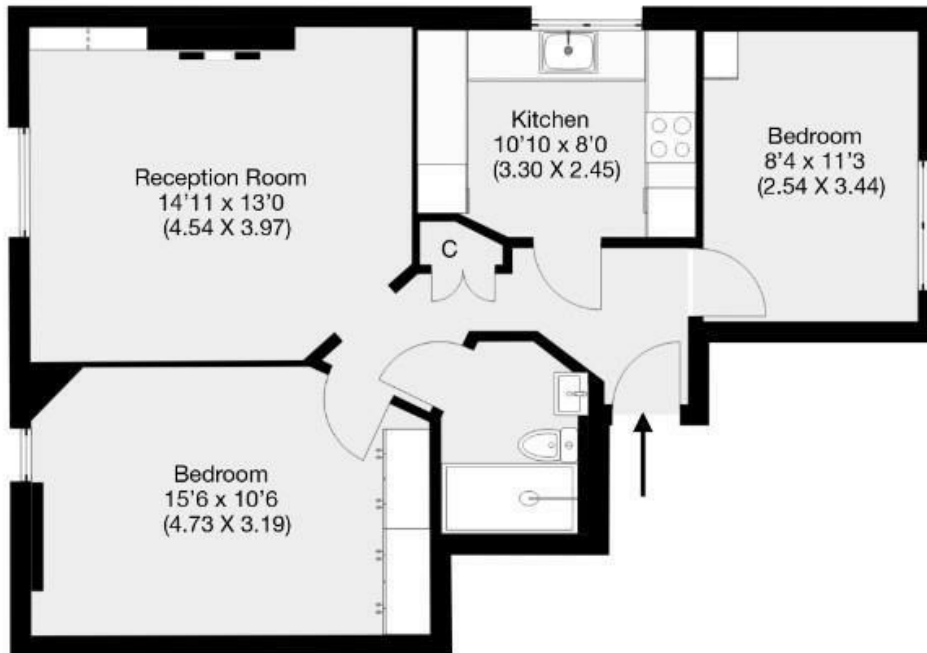
2nd floor in period conversion  
Sleek kitchen with all appliances  
Walking distance to Belsize village  
EPC: Rating C, Council Tax: Camden band F

Belsize Park Office 020 7431 3104



## Lyndhurst Gardens, London, NW3

Approximate Gross Internal Area 63 sqm / 678 sqft



### Second Floor

THIS FLOOR PLAN IS PRODUCED FOR PARKHEATH SUBMITTED BY ARCHIMEDIA web: [www.archi-media.co.uk](http://www.archi-media.co.uk)

Whilst every attempt has been made to ensure the accuracy of the floor plan contained here, measurements of doors, windows and rooms are approximate and no responsibility is taken for any error, omission or misstatement. These plans are for representation purposes only and should be used as such by any prospective buyer or lease. Specifically no guarantee is given on the gross internal floor area of the property if quoted on this plan and any figures given is initial guidance only and should be treated as such.

The particulars do not constitute part of an offer or contract. The particulars, including text, photographs and plans, are for the guidance only of prospective purchasers/tenants and must not be relied upon as statements of fact. The descriptions provided therein represent the opinion of the author and whilst given in good faith should not be construed as statements of fact. Nothing in these particulars shall be deemed a statement that the property is in good condition or otherwise or that any services or facilities are in good working order. All measurements are approximate