

Parkheath

Sold on Service

Ainger Road NW3

£2,900 PCM (£670 per week) - Camden Band E



Delightful 2 bedroom, 2 bathroom garden apartment

Private patio garden and communal roof terrace

Formal reception room

Wood floors throughout

Exceptional local shops and restaurants

Ground floor in terraced period conversion

Kitchen with adjoining dining area

Master bedroom with en suite shower room

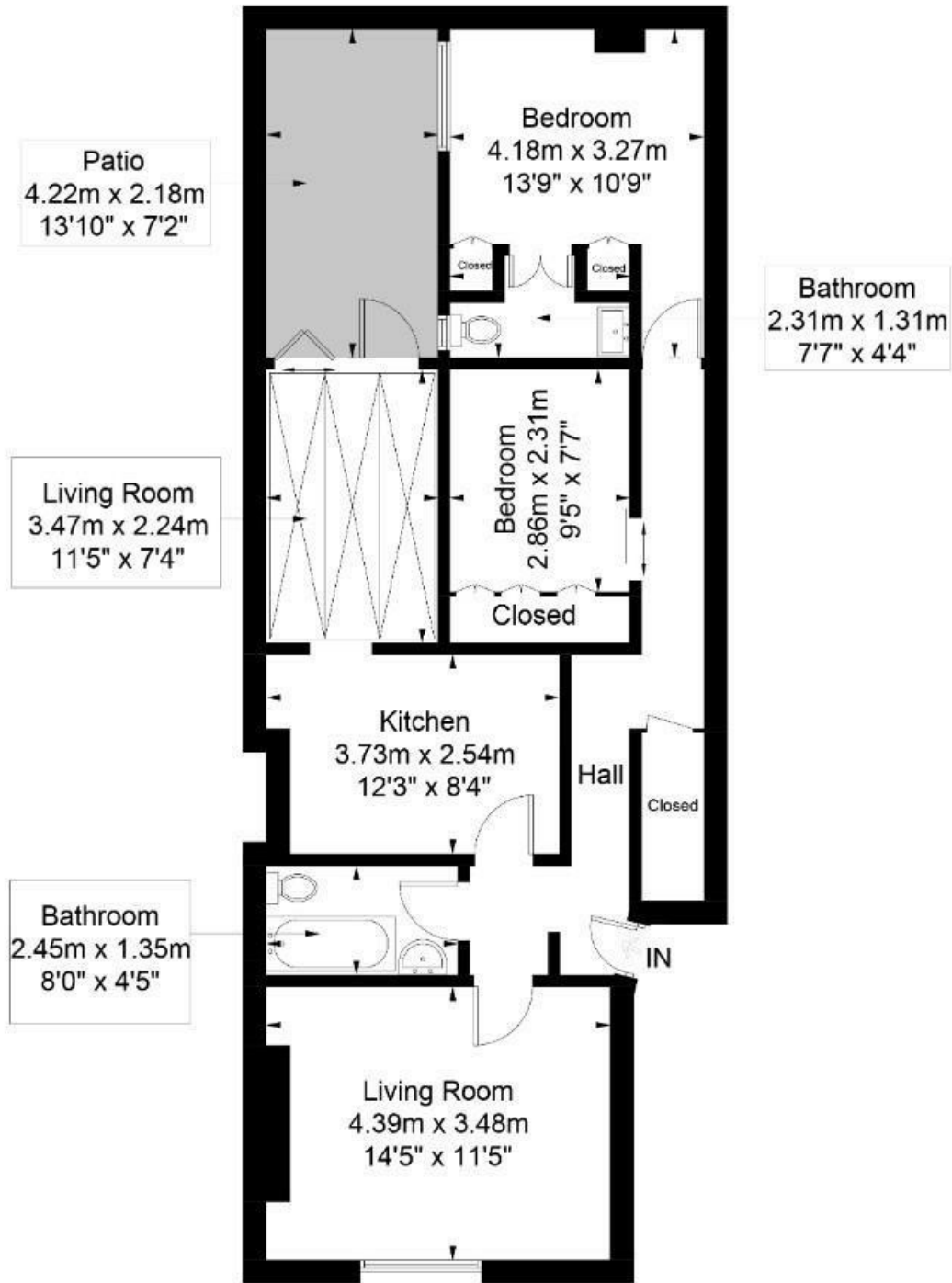
Prime location adjacent to Primrose Hill Park

EPC: Rating C, Council Tax: Camden band E

Belsize Park Office 020 7431 3104

Primrose Hill

Approximate Gross Internal Area = 73 sq m / 786 sq ft



Ground Floor

Illustration for identification purposes only, measurements are approximate, not to scale. FloorplansUsketch.com © 2018 (ID505504)
ELLIE CLAIRE PHOTOGRAPHY LTD

The particulars do not constitute part of an offer or contract. The particulars, including text, photographs and plans, are for the guidance only of prospective purchasers/tenants and must not be relied upon as statements of fact. The descriptions provided therein represent the opinion of the author and whilst given in good faith should not be construed as statements of fact. Nothing in these particulars shall be deemed a statement that the property is in good condition or otherwise or that any services or facilities are in good working order. All measurements are approximate