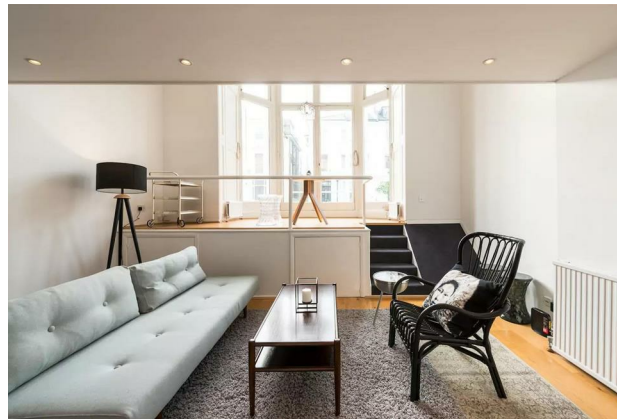




Belsize Park Gardens NW3

Parkheath
Sold on Service





Belsize Park Gardens, NW3
Asking Price £525,000
Share of Freehold

- A fantastic bay fronted raised ground floor studio apartment
- Floor to ceiling windows
- Set in beautiful semi detached white stucco period conversion
- Stunning 20ft reception with open plan kitchen
- 16ft galleried sleeping area
- Over 600 sq ft including mezzanine
- Extremely bright and airy
- Share of freehold
- Set in this prime Belsize Park street
- Wonderfully situated for Belsize Park, Belsize Village, Primrose Hill and Swiss Cottage

Belsize Park/Hampstead
 208 Haverstock Hill
 NW3 2AG
 Sales 020 7431 1234
 Lettings 020 7431 3104
nw3@parkheath.com

South/West Hampstead
 192 West End Lane
 NW6 1SG
 Sales & Lettings
 Tel 020 7794 7111
192@parkheath.com

Kensal Rise
 54-56 Chamberlayne Rd
 NW10 3JH
 Tel 020 8960 4845
kensal@parkheath.com

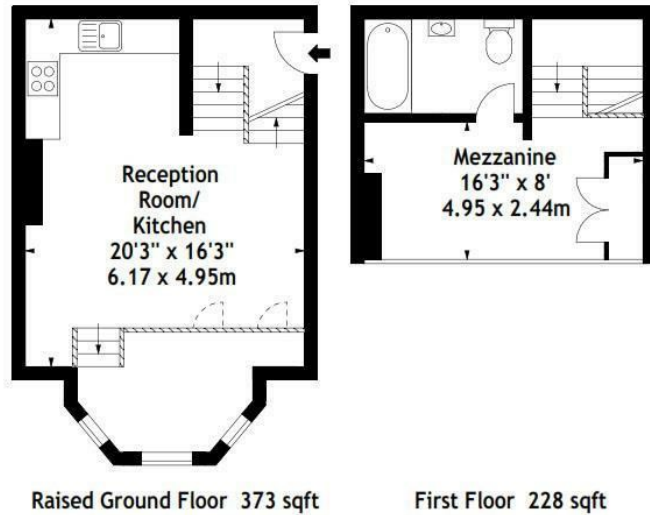
Property Management
 192 West End Lane
 NW6 1SG
 020 7433 6174
pm@parkheath.com

www.parkheath.com

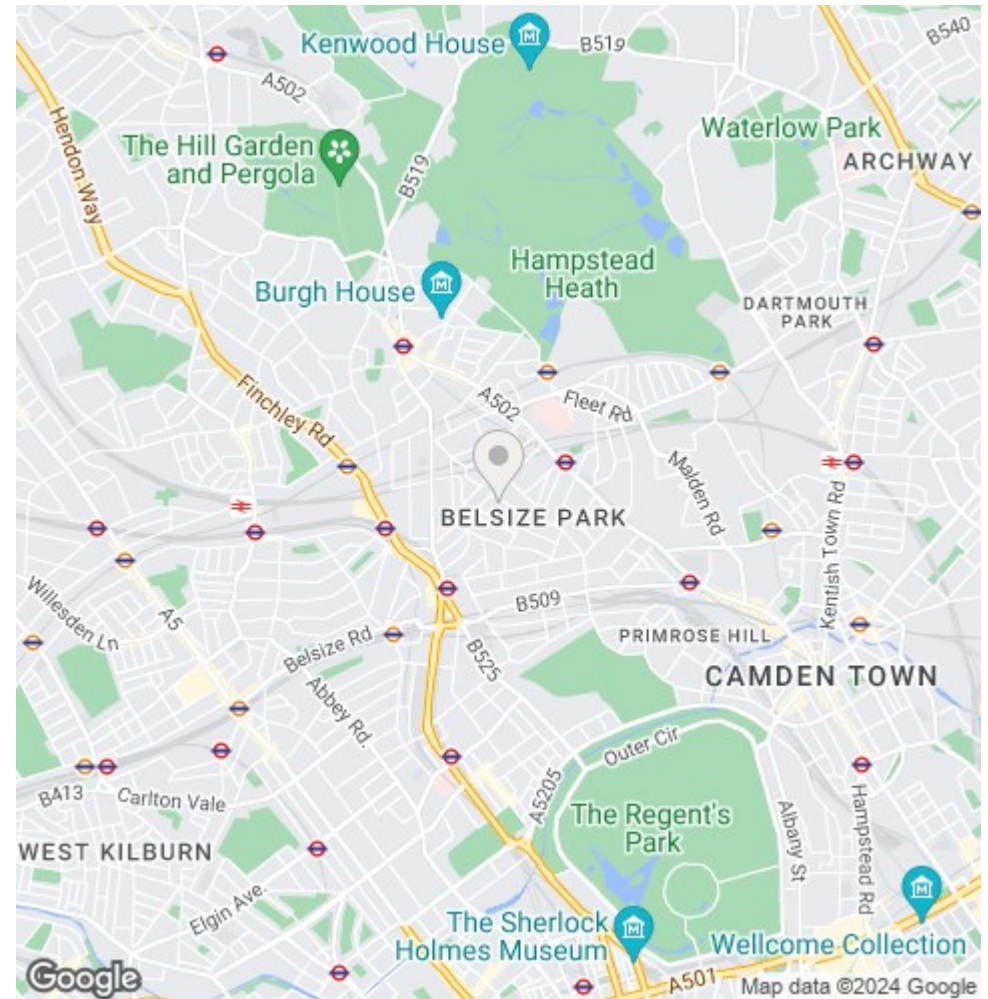
Parkheath
Sold on Service

Camden Tax band E

Belsize Park Gardens, NW3
Approx. Gross Internal Area
601 Sq Ft - 55.83 Sq M



Measured in accordance with RICS guidelines. Every attempt is made to ensure accuracy, however all measurements are approximate. This floor plan is for illustrative purposes only and is not to scale.
© Datography Ltd 2014
Photographs * Floorplans * Virtual Tours
Tel: 0845 643 4401 www.datography.com



The particulars do not constitute part of an offer or contract. The particulars, including text, photographs and plans, are for the guidance only of prospective purchasers/tenants and must not be relied upon as statements of fact. The descriptions provided therein represent the opinion of the author and whilst given in good faith should not be construed as statements of fact. Nothing in these particulars shall be deemed a statement that the property is in good condition or otherwise or that any services or facilities are in good working order. All measurements are approximate