

# Parkheath

*Sold on Service*

---

## Eton Avenue NW3

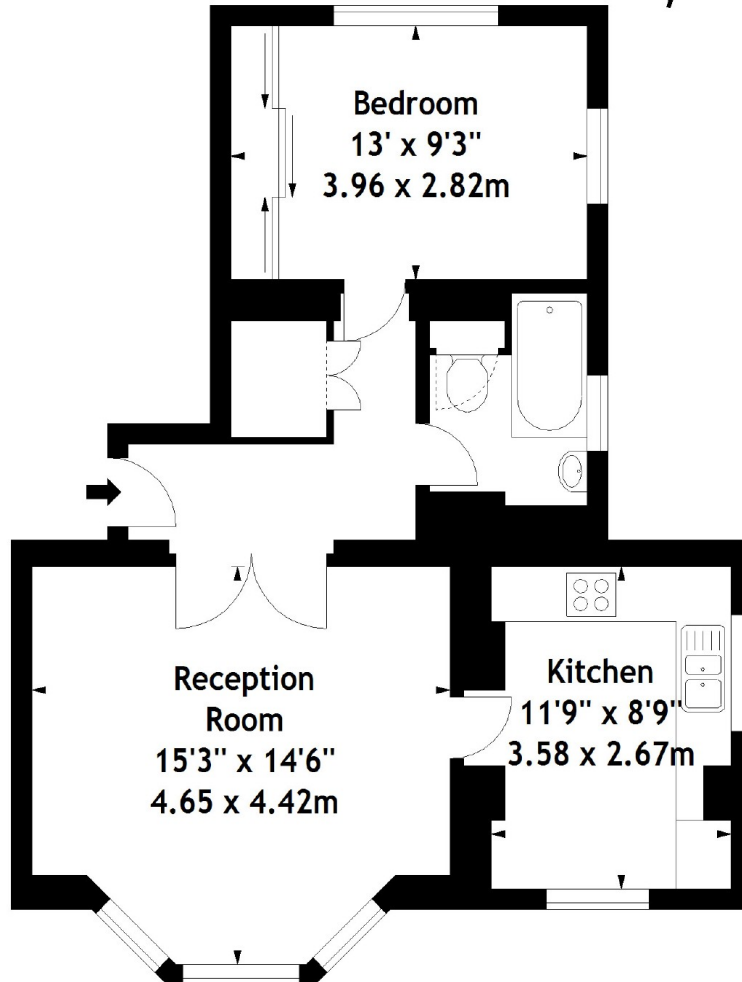
£330 per week (£1430 pcm)



Charming 1 bedroom apartment  
Ground floor in period conversion  
Spacious reception  
Separate kitchen/diner

Large bedroom with fitted wardrobes  
3 piece bathroom  
Ample storage  
Located moments to Swiss Cottage underground

Eton Avenue, NW3  
Approx. Gross Internal Area  
591 Sq Ft - 54.90 Sq M



### Ground Floor

Measured in accordance with RICS guidelines. Every attempt is made to ensure accuracy, however all measurements are approximate. This floor plan is for illustrative purposes only and is not to scale.

© Datography Ltd 2016  
Photographs \* Floorplans \* Virtual Tours  
Tel: 0845 643 4401 [www.datography.com](http://www.datography.com)

The particulars do not constitute part of an offer or contract. The particulars, including text, photographs and plans, are for the guidance only of prospective purchasers/tenants and must not be relied upon as statements of fact. The descriptions provided therein represent the opinion of the author and whilst given in good faith should not be construed as statements of fact. Nothing in these particulars shall be deemed a statement that the property is in good condition or otherwise or that any services or facilities are in good working order. All measurements are approximate.