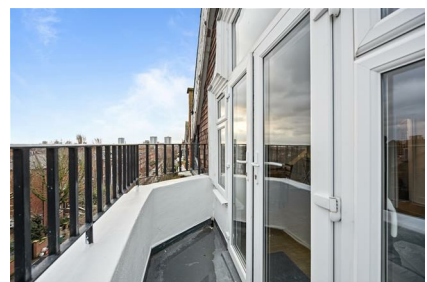


Parkheath

Sold on Service

Greencroft Gardens NW6

£2,250 PCM (£519 per week) - Camden Band E



Two bedroom apartment

Within moments of Finchley Road underground

Bright reception room

One good-sized double and second smaller double bedroom

The apartment will be redecorated ahead of the new tenancy

West Hampstead Office 020 7794 7111

Top floor of a period conversion

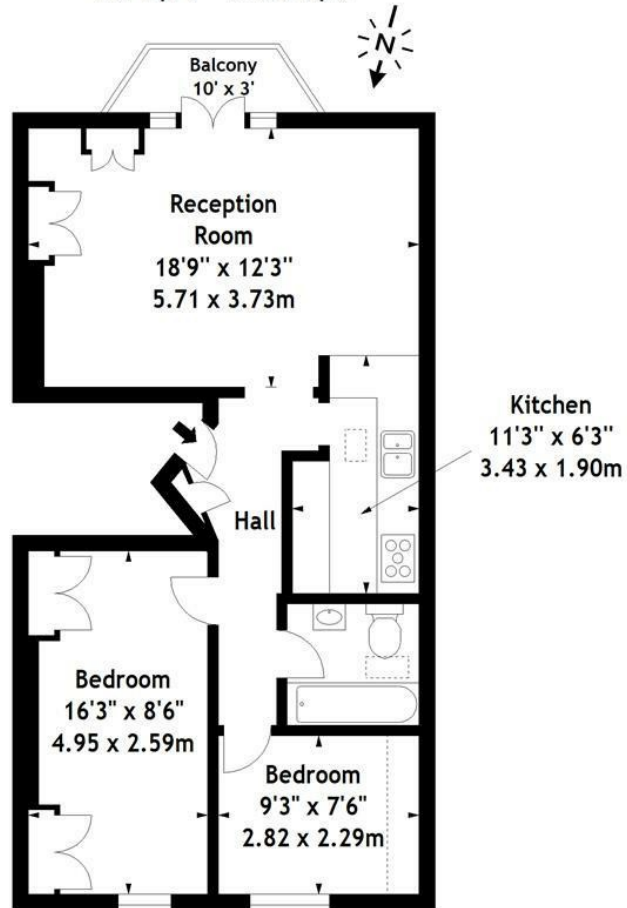
South Hampstead conservation area

Semi open-plan kitchen

Bathroom/WC

EPC: Rating C, Council Tax: Camden band D

Greencroft Gardens, NW6
Approx. Gross Internal Area
607 Sq Ft - 56.39 Sq M



Third Floor

Measured in accordance with RICS guidelines. Every attempt is made to ensure accuracy, however all measurements are approximate.

This floor plan is for illustrative purposes only and is not to scale.

© Datography Ltd 2015

Photographs * Floorplans * Virtual Tours
Tel: 0845 643 4401 www.datography.com

The particulars do not constitute part of an offer or contract. The particulars, including text, photographs and plans, are for the guidance only of prospective purchasers/tenants and must not be relied upon as statements of fact. The descriptions provided therein represent the opinion of the author and whilst given in good faith should not be construed as statements of fact. Nothing in these particulars shall be deemed a statement that the property is in good condition or otherwise or that any services or facilities are in good working order. All measurements are approximate