

# Parkheath

*Sold on Service*

---

## Greencroft Gardens NW6

£600 per week (£2,600 pcm)

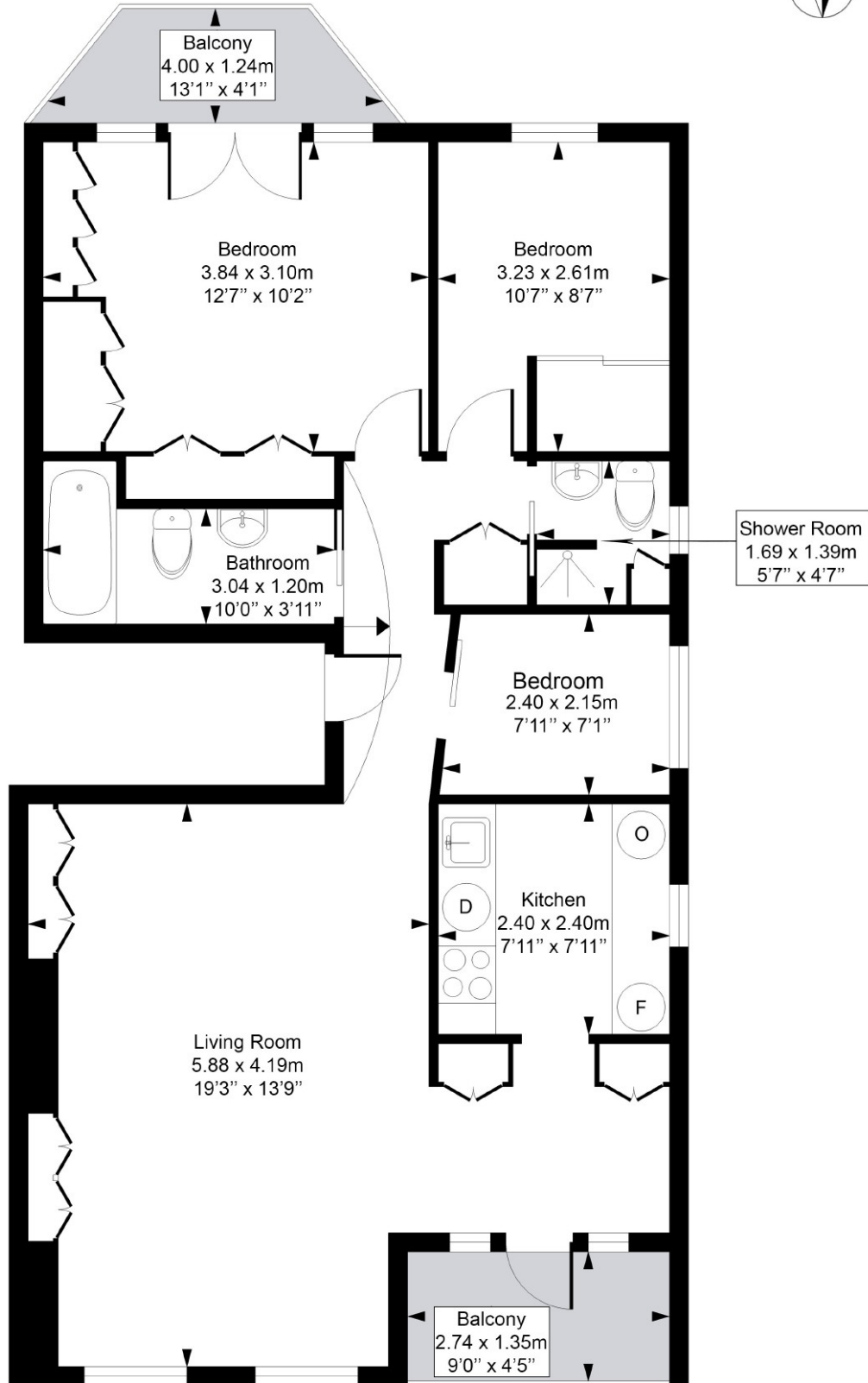


Virtual viewing available  
Stunning 3 bedroom apartment  
2 bathrooms  
Wooden floors and high ceilings

1st floor  
Period property  
2 balconies and communal garden  
Conservation area

# Greencroft Gardens

Approximate Gross Internal Area = 74.7 Sq m / 805 sq ft



## First Floor

Measured in accordance with RICS guidelines. Every attempt is made to ensure accuracy  
However all measurements are approximate.

The floor plan is illustrative purposes only and is not to scale

ELLIE CLAIRE PHOTOGRAPHY LTD

[www.ellieclairephotography.com](http://www.ellieclairephotography.com)

The particulars do not constitute part of an offer or contract. The particulars, including text, photographs and plans, are for the guidance only of prospective purchasers/tenants and must not be relied upon as statements of fact. The descriptions provided therein represent the opinion of the author and whilst given in good faith should not be construed as statements of fact. Nothing in these particulars shall be deemed a statement that the property is in good condition or otherwise or that any services or facilities are in good working order. All measurements are approximate.