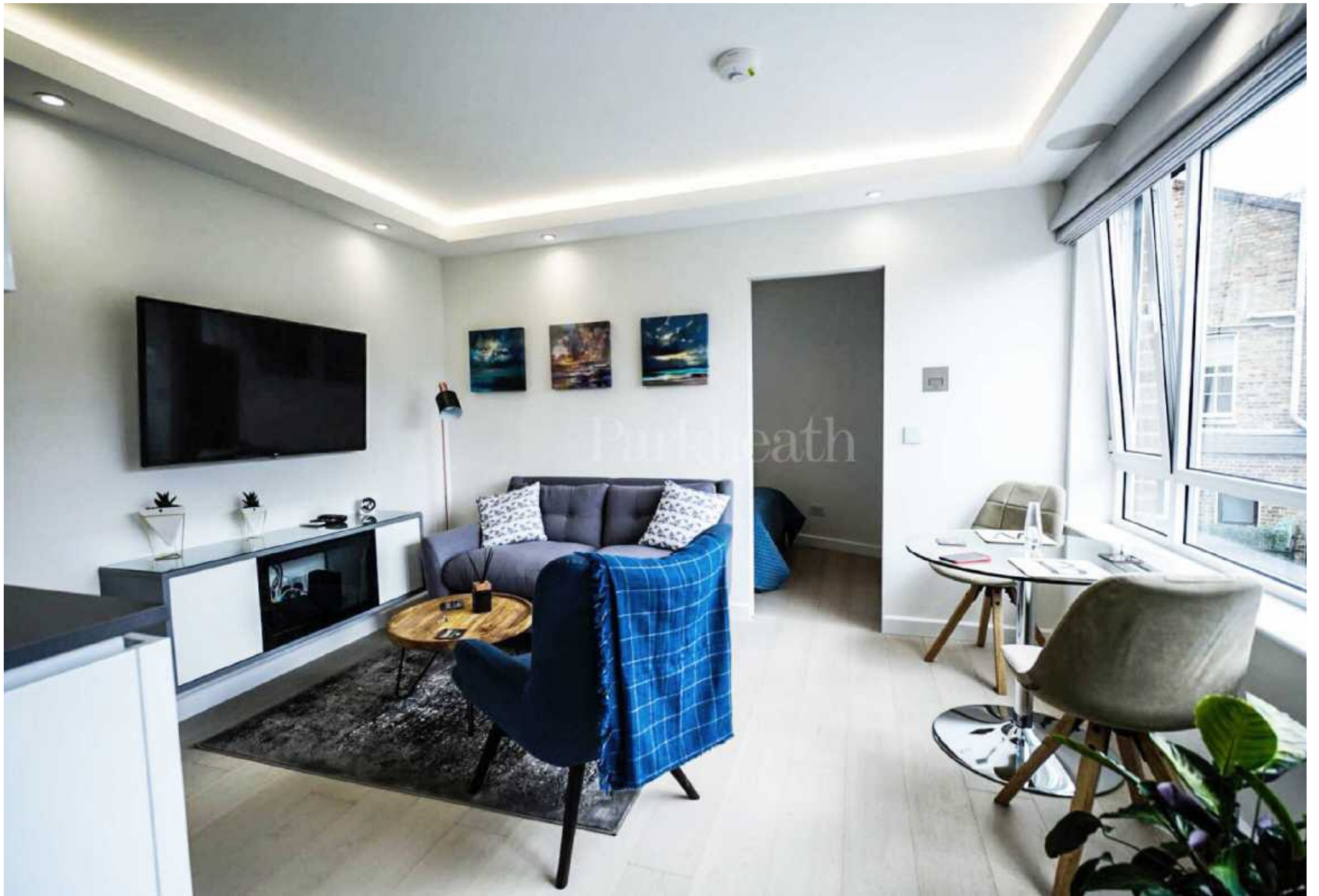




Fairhazel Gardens, South Hampstead NW6

Parkheath
Sold on Service





Fairhazel Gardens South Hampstead NW6

£415,000 Leasehold

Immaculate one bedroom apartment

Refurbished to a high end finish throughout

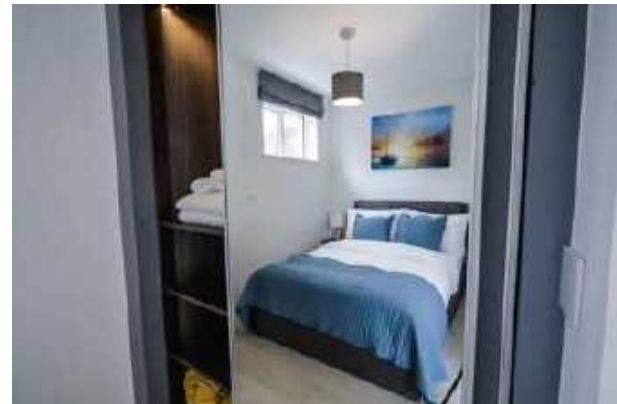
327 Sq Ft / 30.4 Sq M

15' open plan kitchen reception room

First floor of mansion block

6 minute walk to Swiss Cottage Station (Jubilee line)

Amenities of West Hampstead, Finchley Road and
Swiss Cottage all within 10 minute walk



Belsize Park
208 Haverstock Hill
NW3 2AG
Sales 020 7431 1234
Lettings 020 7431 3104
nw3@parkheath.com

South Hampstead
8a Canfield Gardens
NW6 3BS
Sales 020 7625 4567
Lettings 020 7644 0800
nw6@parkheath.com

West Hampstead
192 West End Lane
NW6 1SG
Sales & Lettings
Tel 020 7794 7111
192@parkheath.com

Parkheath
Sold on Service

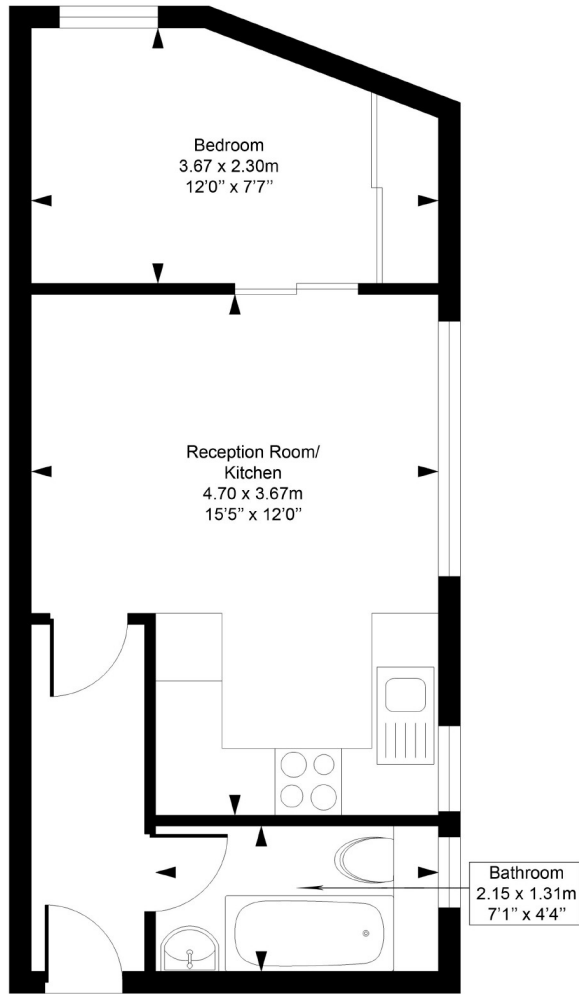
Kentish Town
148 Kentish Town Rd
NW1 9QB
Tel 020 7485 0400
kt@parkheath.com

Kensal Rise
54-56 Chamberlayne Rd
NW10 3JH
Tel 020 8960 4845
kensal@parkheath.com

Property Management
192 West End Lane
NW6 1SG
020 7433 6174
pm@parkheath.com

Fairhazel Gardens

Approximate Gross Internal Area = 30.4 Sq m / 327 sq ft



First Floor

Measured in accordance with RICS guidelines. Every attempt is made to ensure accuracy
However all measurements are approximate.
The floor plan is illustrative purposes only and is not to scale
ELLIE CLAIRE PHOTOGRAPHY LTD
www.ellieclairephotography.com

You may download, store and use the material for your own personal use and research. You may not republish, retransmit, redistribute or otherwise make the material available to any party or make the same available on any website, online service or bulletin board of your own or of any other party or make the same available in hard copy or in any other media without the website owner's express prior written consent. The website owner's copyright must remain on all reproductions of material taken from this website.