

# Parkheath

*Sold on Service*

---

## Strathmore Court, Park Road NW8

£1,630 per week (£7,063.33 pcm) Administration fees apply



Spacious 5 bedroom apartment

Prestigious Mansion Building with fabulous views over Regents Park

Porter and lift

Generous reception room

Modern fully equipped kitchen

Dining hall

Play room/office

2 bathrooms (1 en suite), Guest WC

Excellent internal storage

Moments to Lords Cricket Ground, St John's Wood High Street and Regents Park

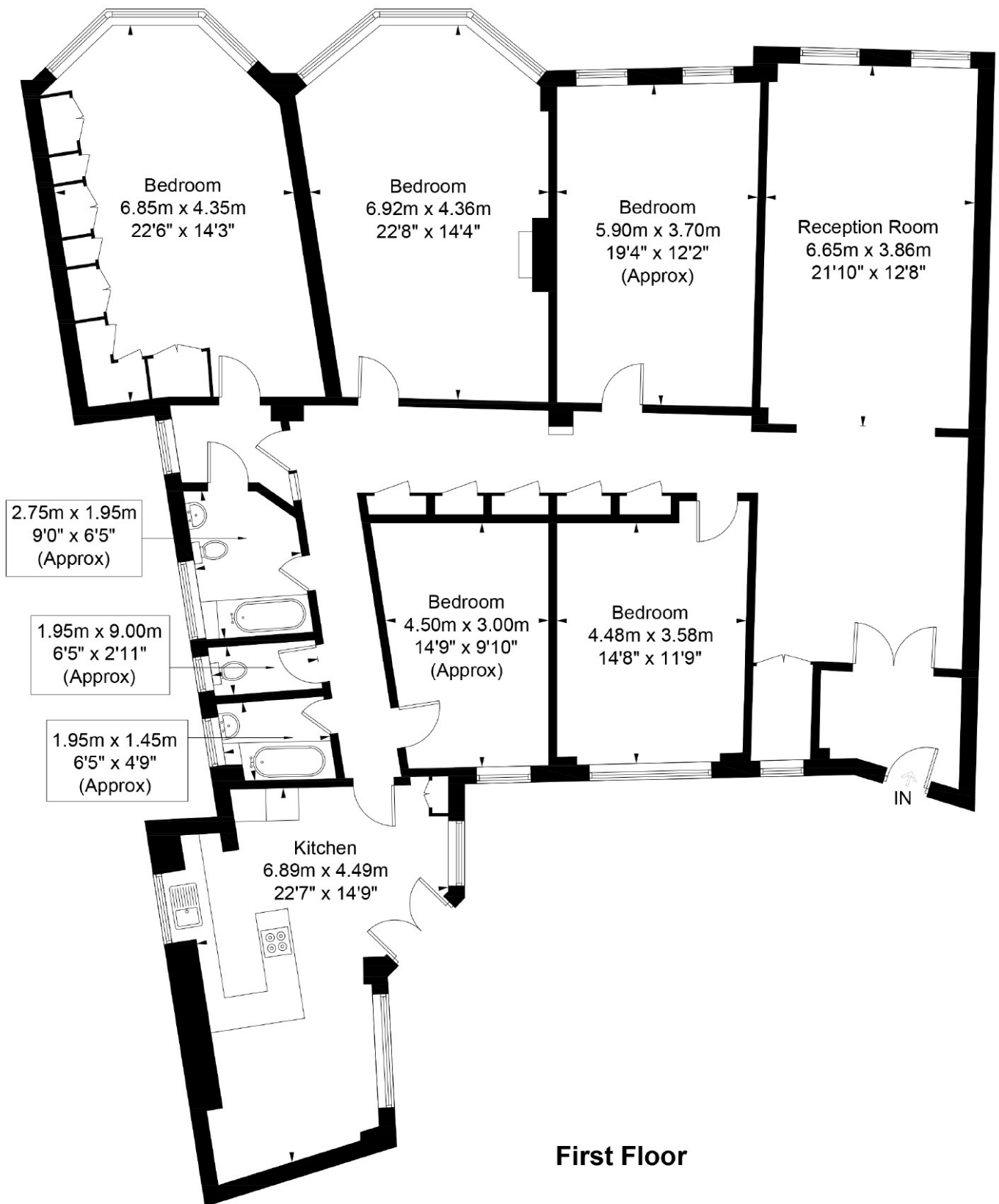
West Hampstead Office 020 7794 7111

South Hampstead Office 020 7625 4567

# Park Road



Approximate Gross Internal Area = 225 sq m / 2421 sq ft



## First Floor

Illustration for identification purposes only, measurements are approximate, not to scale. FloorplansUsketch.com © 2018 (ID497733)  
ELLIE CLAIRE PHOTOGRAPHY LTD

Administration fees apply

The particulars do not constitute part of an offer or contract. The particulars, including text, photographs and plans, are for the guidance only of prospective purchasers/tenants and must not be relied upon as statements of fact. The descriptions provided therein represent the opinion of the author and whilst given in good faith should not be construed as statements of fact. Nothing in these particulars shall be deemed a statement that the property is in good condition or otherwise or that any services or facilities are in good working order. All measurements are approximate.